

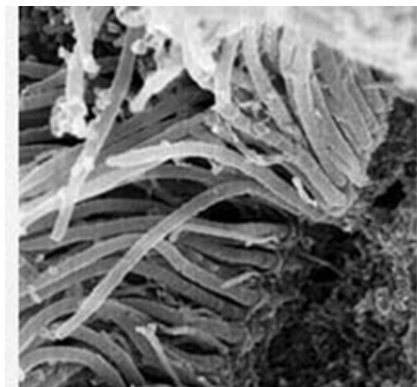
Chapter 16-3

Lung Diseases

Nov 4-12:37 PM

Cilia

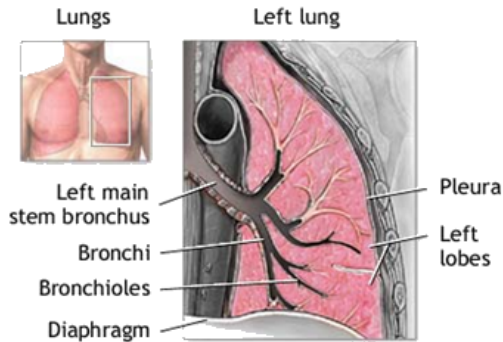
- Protect your respiratory System
- In the trachea and lungs
- Beat in an upward direction so you do not swallow the dirt etc



Cilia

Nov 4-12:34 PM

Lung Disease



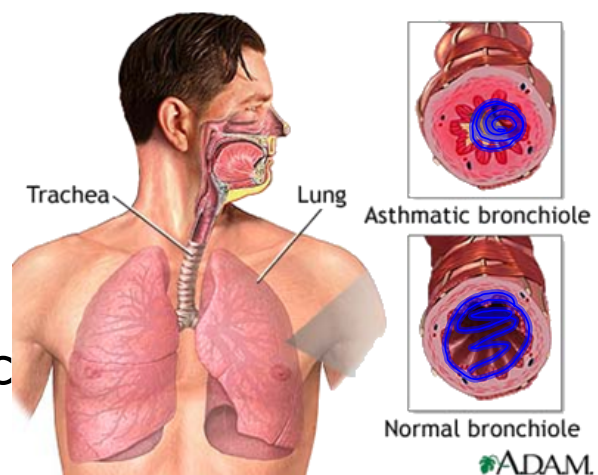
ADAM.

- Air has pollen, dust, smoke, and smog
- Cigarette smoking temporarily paralyze cilia
- Things then get into the lungs
- They are engulfed by the WBC
- Things like asbestos are not

Nov 4-12:35 PM

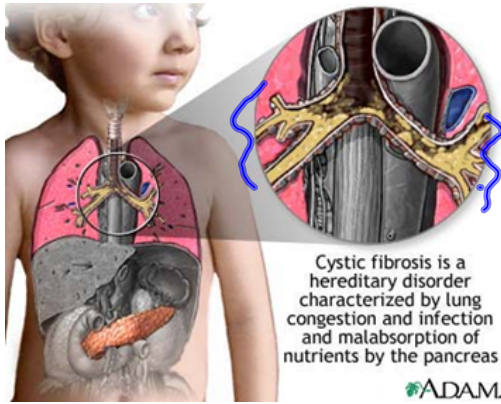
Asthma

- Disorder of the lungs in which there may be:
 - Shortness of breath
 - Wheezing
 - coughing
- The bronchial tubes constrict quickly
- Air flow to lungs reduced
- Attacks caused by:
 - Pollen
 - stress
 - Eating certain foods



Nov 4-12:35 PM

Cystic fibrosis



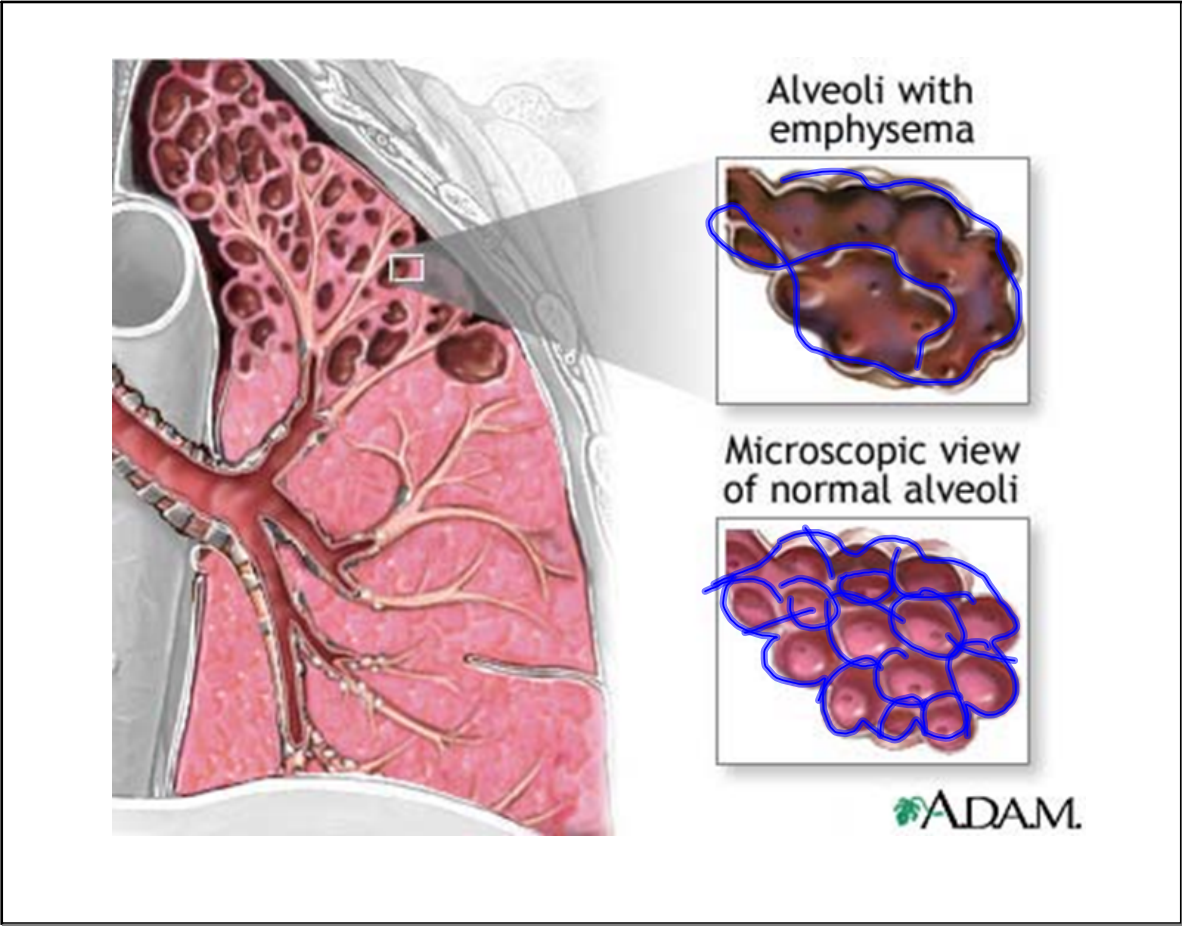
- Genetic disease
- Blocks the air passages
- Fluid that lines the lungs and air passages thickens
- No cure
- Symptoms
- Wheezing
- Coughing
- Lung infections

Nov 4-12:35 PM

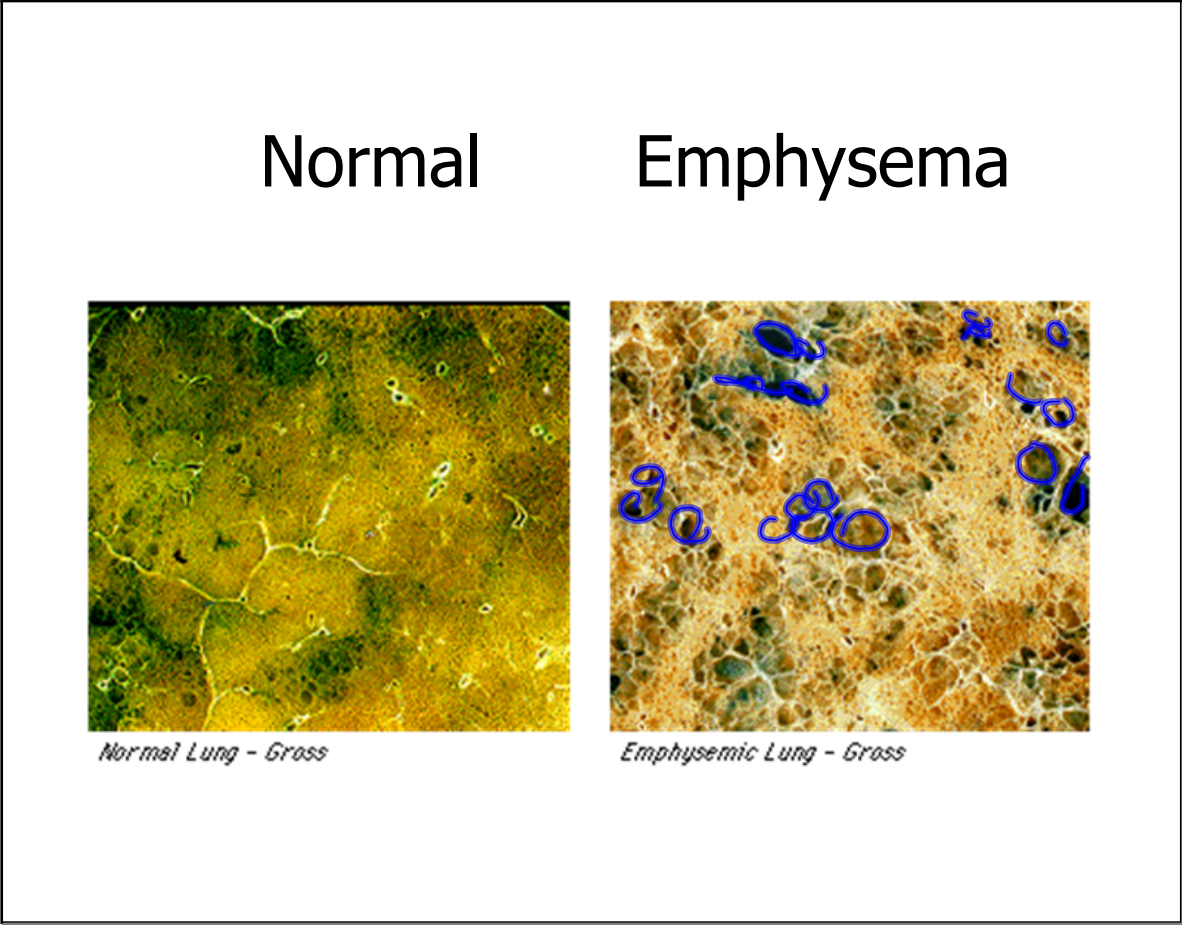
Emphysema

- Linked with Smoking
- Occurs when air passageways or alveoli lost their ability to expand and contract
- Air becomes trapped and alveoli
- Alveoli stretch and burst
- Surface air or lungs decreases
- Less oxygen into the blood stream, carbon dioxide stays in the blood stream
- Some people with this can not blow out a match or walk up stairs.
- Heart has to work harder to supply oxygen to body so many develop heart problems

Nov 4-12:35 PM



Nov 4-12:36 PM



Nov 4-12:36 PM

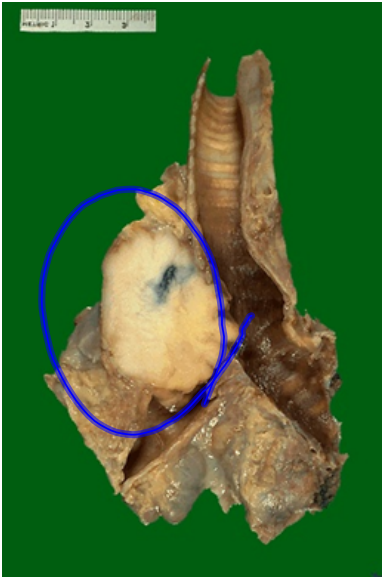
Lung Cancer

- Causes the most deaths among men and women in the United States
- Inhaling tar in cigarette smoke is the greatest contributing factor to lung cancer
- Cancer cells out number normal cells so the normal cells weaken and cannot do their job
- Cilia are weakened

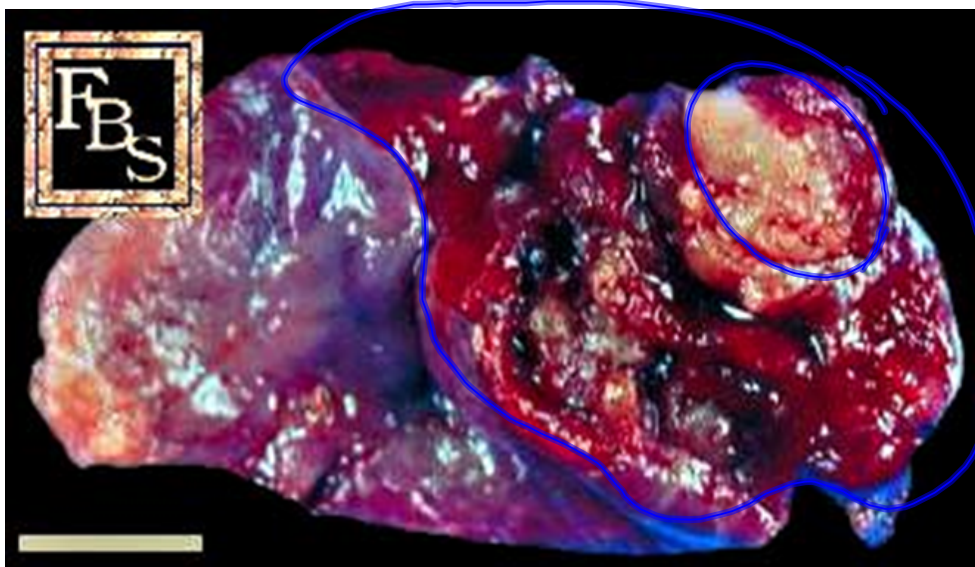
Nov 4-12:36 PM



Nov 4-12:36 PM



Nov 4-12:36 PM



Nov 4-12:36 PM