

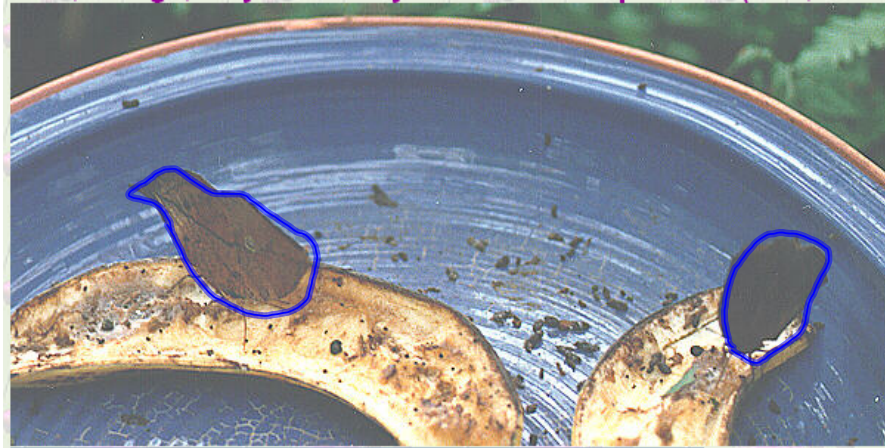
Scientific Method

Aug 30 - 11:50 AM

Current biological problems or questions.

hurricane
nuclear smog
malaiia global warming AIDS
cost of living solar gas prices

Aug 30 - 11:55 AM



http://biology.clc.uc.edu/courses/bio104/sci_meth.htm

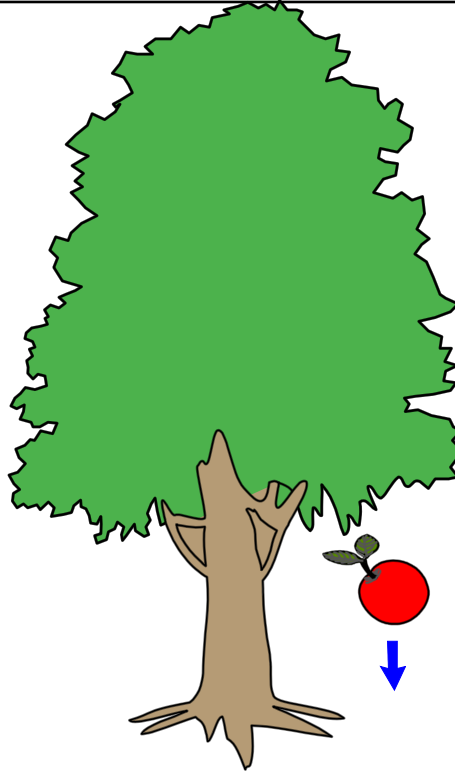
Aug 30 - 11:58 AM

First step in the scientific method.

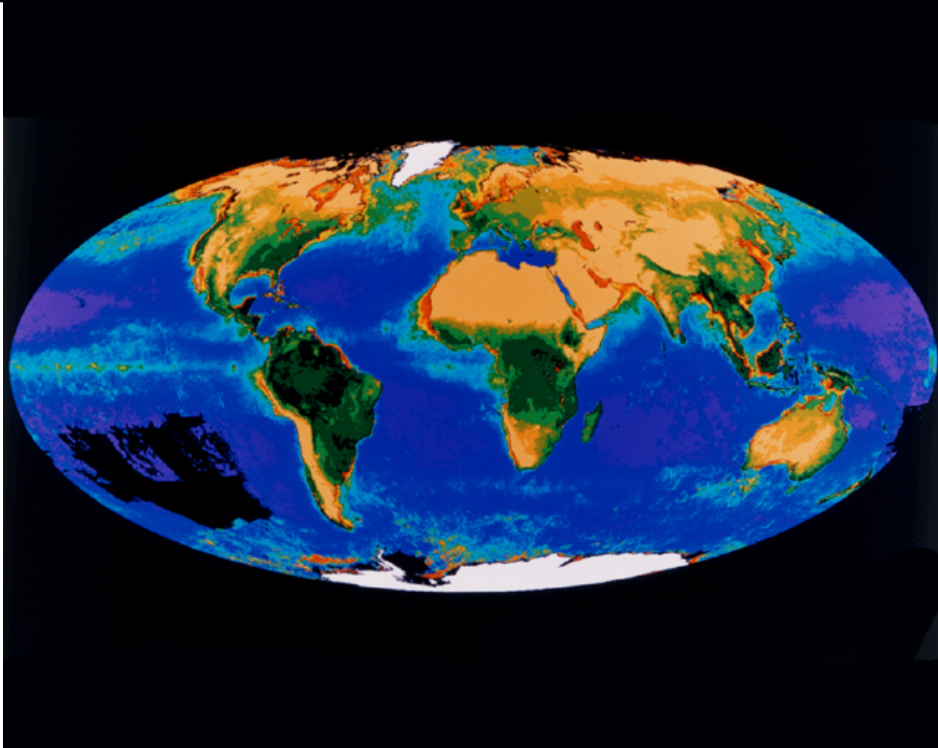
Observation

Observation

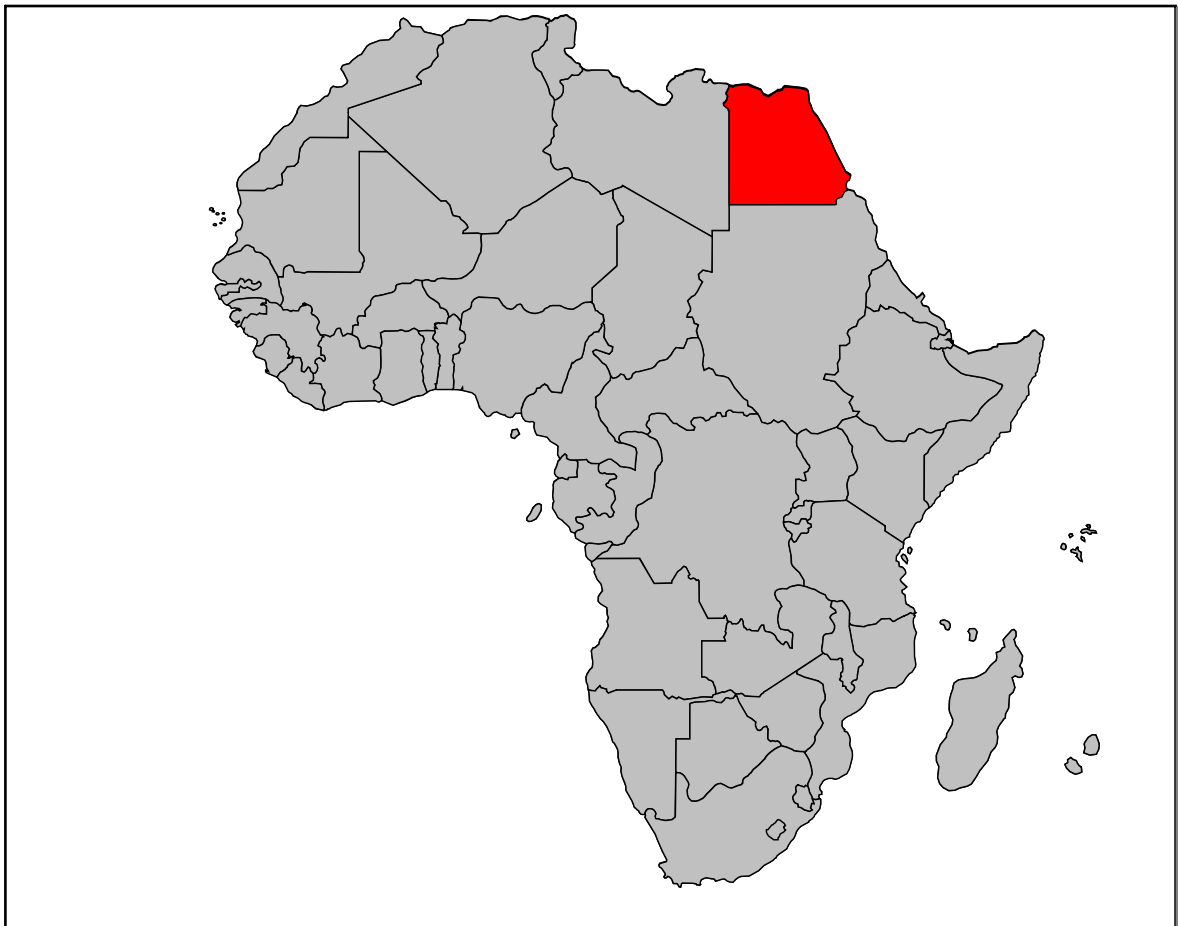
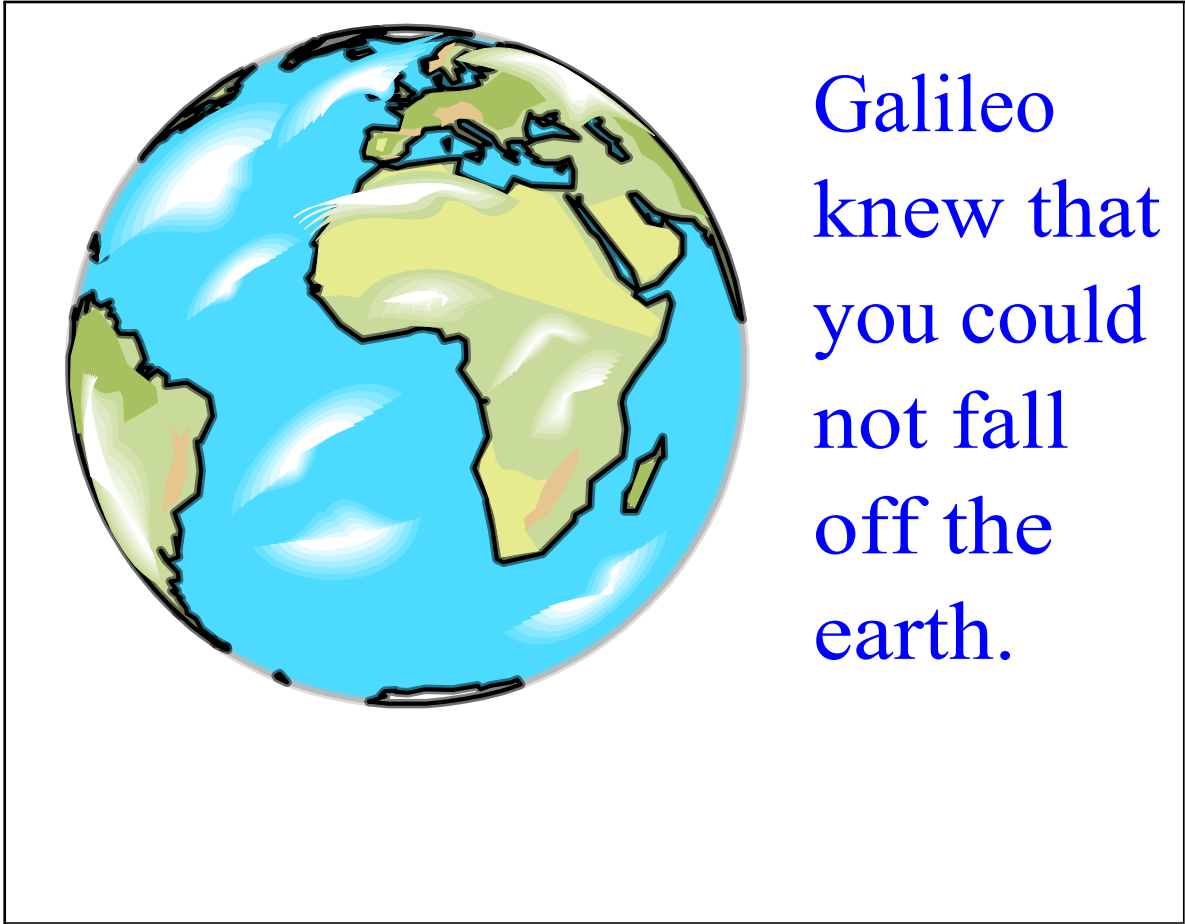
The apple
fell on
Newton's
head.



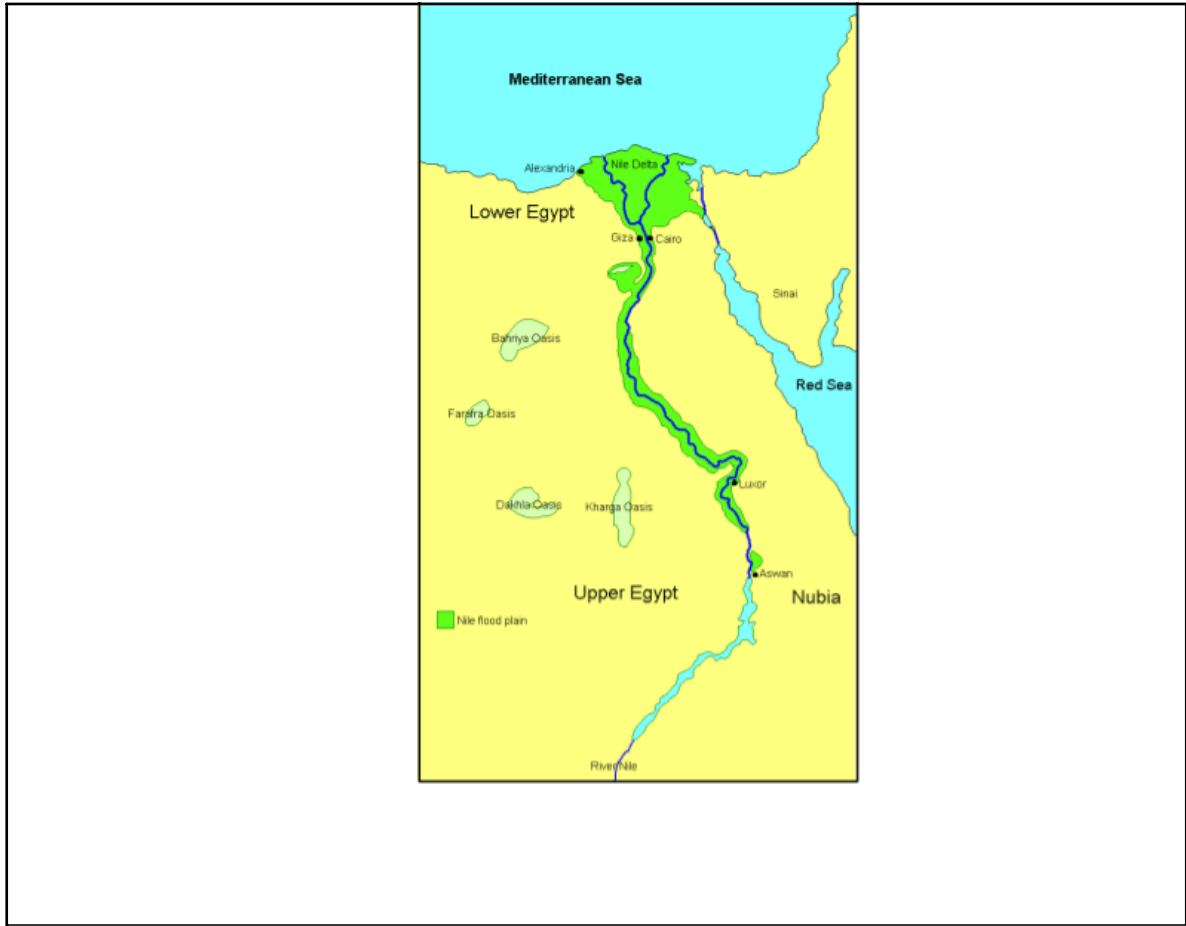
Falling apple



Aug 29-9:20 PM



Africa



Map of Ancient Egypt

Observation: Every year in the spring, the Nile River flooded areas of Egypt along the river, leaving behind nutrient-rich mud that enabled the people to grow that year's crop of food. However, along with the muddy soil, large numbers of frogs appeared that weren't around in drier times.



Observation: In many parts of Europe, medieval farmers stored grain in barns with thatched roofs (like Shakespeare's house). As a roof aged, it was not uncommon for it to start leaking. This could lead to spoiled or moldy grain, and of course there were lots of mice around.



Aug 30 - 12:01 PM



Recipe for Bees:



Kill a young bull, and bury it in an upright position so that its horns protrude from the ground. After a month a swarm of bees will fly out of the corpse.

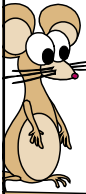


Aug 29-9:31 PM

Jan Baptista van Helmont's recipe for mice:



Place a dirty shirt of some rags in an open pot or barrel containing a few grains of wheat or some wheat bran, and in 21 days some mice will appear. There will be adult males and females present, and they will be capable of mating and reproducing mice.



Aug 29-9:33 PM

Second step in the scientific method.

Question

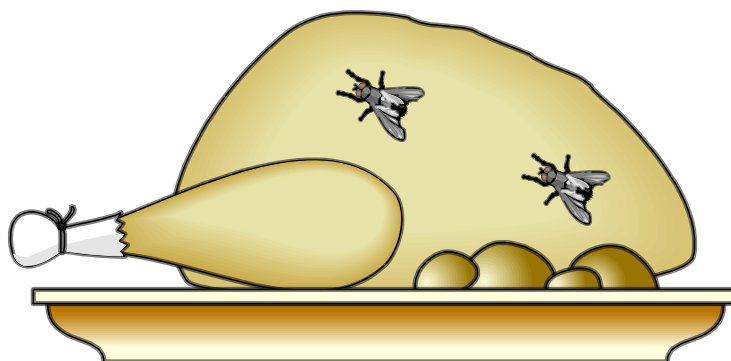
Questions

“How many students came to school today?”

“Why did you come to school today?”

Aug 30 - 2:59 PM

Question: Where do the flies at the butcher shop really come from?
Does rotting meat turn into or produce the flies?



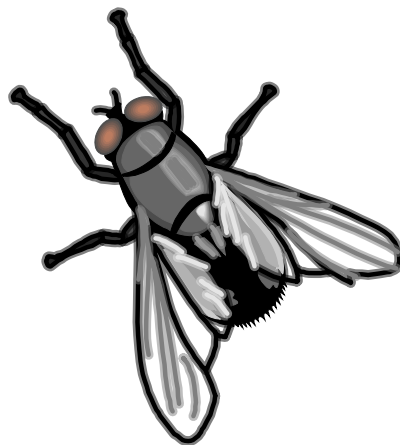
Aug 30 - 2:59 PM

Third step in the scientific method.

Hypothesis
"an educated
guess"

Hypothesis

- **Hypothesis:** Rotten meat does not turn into flies. Only flies can make more flies.



Aug 30 - 3:01 PM

Team up with the person next you!

- Record the number of times you breathe during a one minute period
- How do you think exercise will affect this?
- Guess the number
- Jog in place for two minutes
- Record the number of breaths for one minute after completing exercise
- How did the exercise affect your breathing?
- What is the connection?

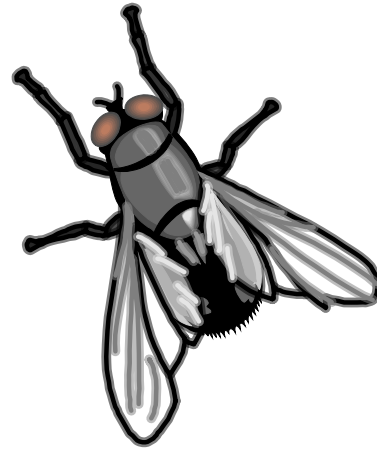
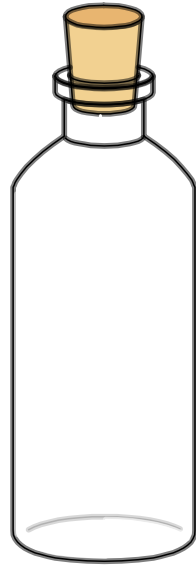
Aug 30 - 3:15 PM

Fourth step in the scientific method.

Prediction

Prediction

- **Prediction:** If meat cannot turn into flies, rotting meat in a sealed (fly-proof) container should not produce flies or maggots.



Aug 30 - 3:04 PM

Fifth step in the scientific method.

Experiment

Experiment



Sixth step in the scientific method.

Conclusion

Conclusion

Seventh step in the scientific method.

Repeat

Repeat

Put on your thinking caps

- An insurance company is claiming that white cars are safer than other cars. Work with a partner and form a model for a research project that would determine the validity of the "white- car claim."

