

Subphylum Uniramia

Mostly terrestrial arthropods with chewing mouth parts

3 classes

Insecta (insects)

Diplopoda (millipedes)

Chilopoda (centipedes)

Nov 20 - 9:27 PM

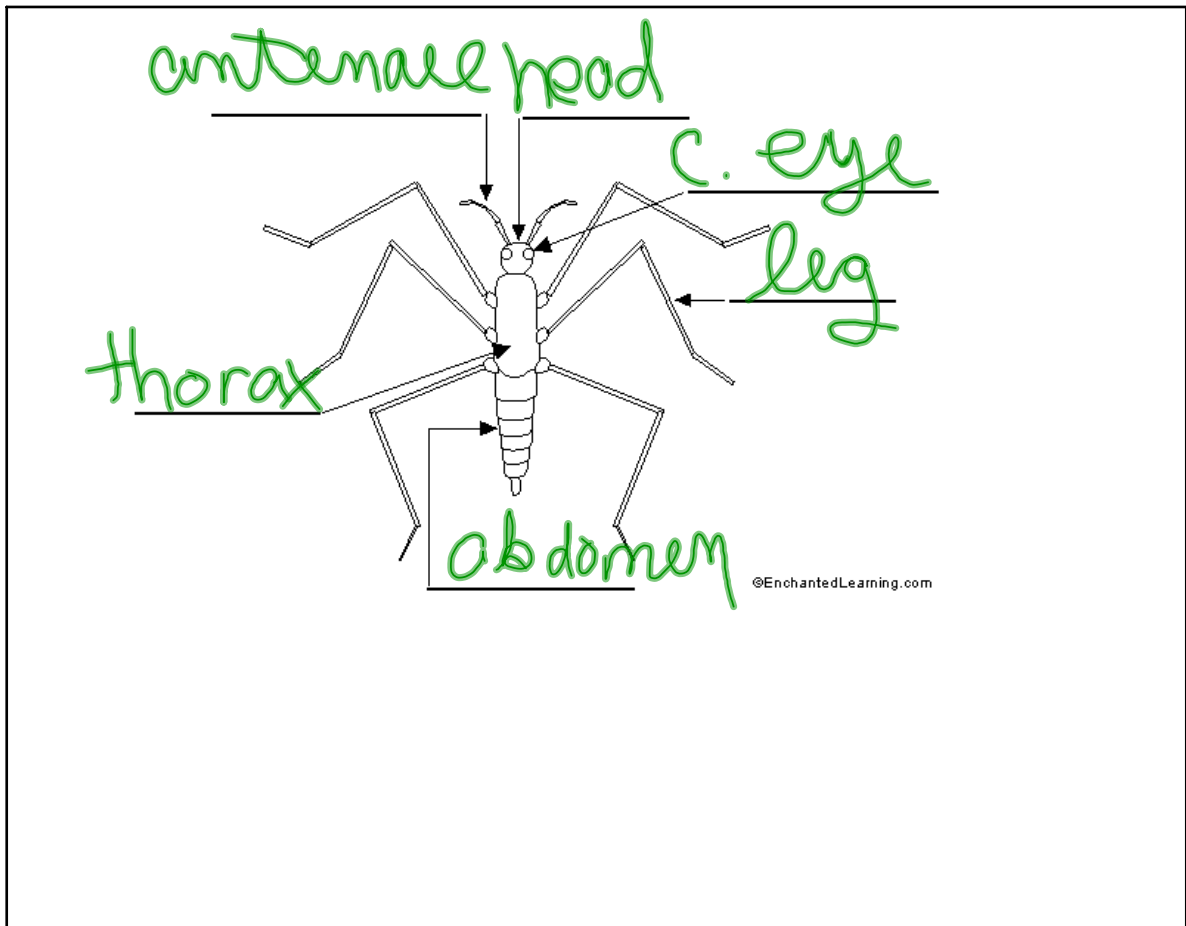
Insect Body Plan

Head: has the specialized mouth parts,
one pair of antennae, compound eye

Thorax: three fused segments usually with
3 pairs of jointed legs and
wings

Abdomen: 9-11 segments

Nov 20 - 9:29 PM



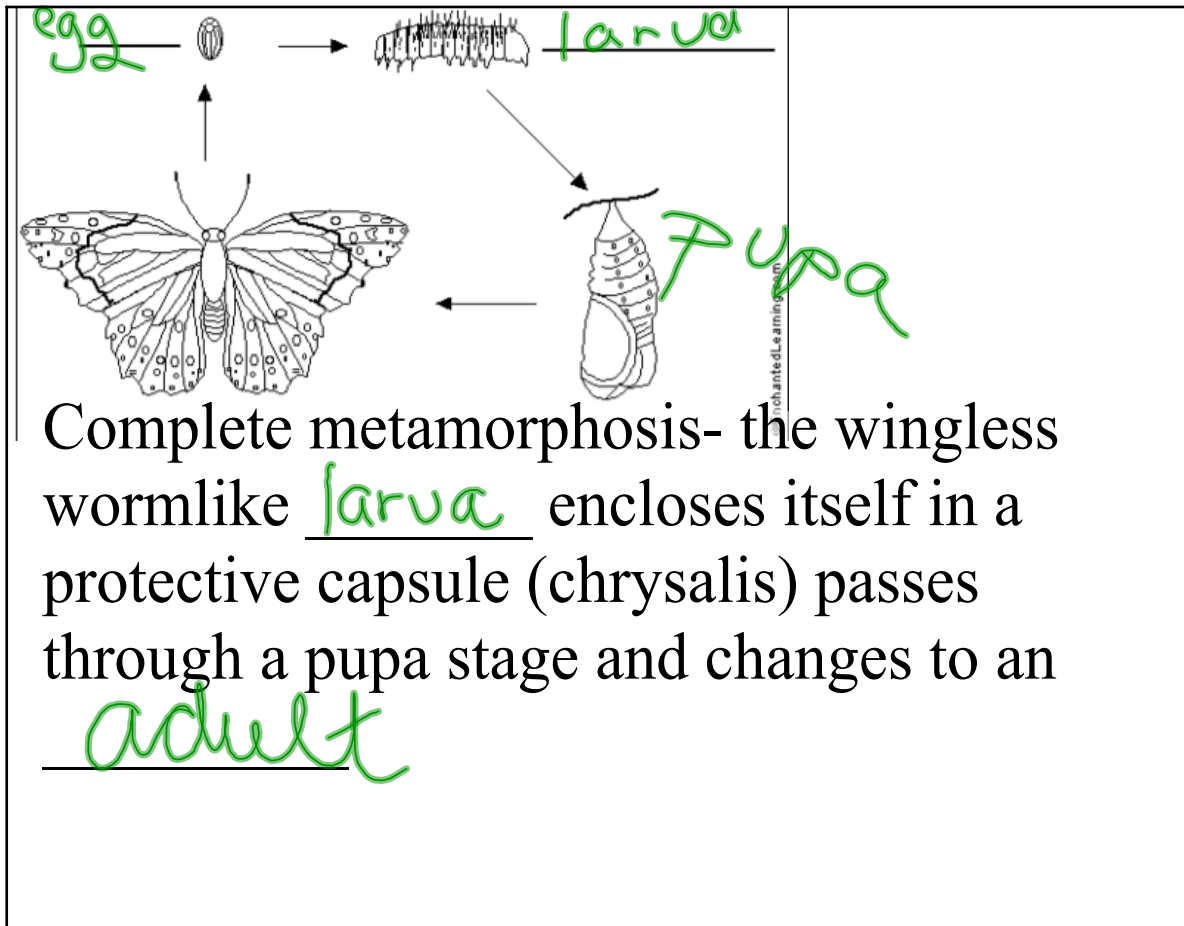
Nov 14 - 3:55 PM

Metamorphosis: dramatic physical change

incomplete metamorphosis-
Egg hatches into a juvenile (nymph) a
small wingless adult

ex: locust
grasshopper

Nov 20 - 9:31 PM



Nov 20 - 9:33 PM

Flight

An insect's wing develop from saclike outgrowths of the body wall of the thorax.

The veins in the wings carry air not blood.

In most insects only one pair of wings are used for flight.

Nov 20 - 9:34 PM

Social Insects

Order Hymenoptera and Order Isoptera have evolved elaborate Social systems

There are marked division of labor with specific function

Caste- role of an individual in a colony.

Many times most member of the colony are sterile.

Bee

Nov 20 - 9:38 PM

Insect Relatives

Centipedes have one pair of legs per segment and can have up to 173 segments. They are also

Carnivores

Millipedes have two sets of legs per segments and can have from 11 to more than 100 segments. They are also

herbivores

Nov 20 - 9:39 PM