

Flatworms have a middle tissue layer called mesoderm and they also have

organs.



<http://www.ucmp.berkeley.edu/platyhelminthes/platyhelminthes.html>

Oct 17 - 10:30 PM

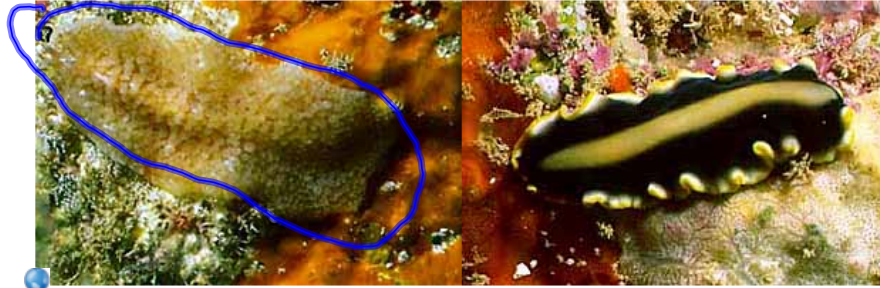
**The flatworm  
is flat so things**

diffuse  
**through the  
solid body.**

Oct 17 - 10:35 PM

Class Turbellaria  
Free-living marine flatworms

↳ salt H<sub>2</sub>O



<http://www.ucmp.berkeley.edu/platyhelminthes/platyhelminthes.html>

Oct 17 - 10:36 PM

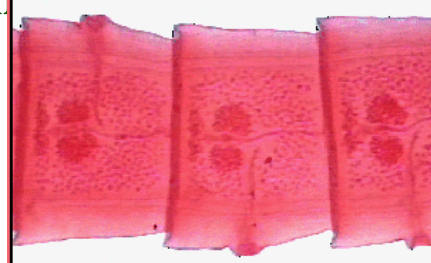
Class  
Cestoda  
ex tapeworms  
They attach  
themselves to  
their host's  
intestine.



<http://www.parasitecleanse.com/GALLERY.HTM>

Oct 17 - 10:37 PM

**Tapeworms grow by adding**  
proglotids (rectangular body  
sections that are a complete  
reproductive unit)



<http://www.biosci.ohio-state.edu/~parasite/taenia.html>

Oct 17 - 10:39 PM

**The sections  
are added and  
the tapeworm  
can get to be**  
40 feet long.

**Beef tapeworm  
lives in the muscle  
tissue of infected**  
Cattle where  
they are enclosed  
in cyst.

Oct 17 - 10:42 PM

Class Trematoda

Largest class called flukes.

They have a tegument (thick protective covering) so they are not digested by their hosts.

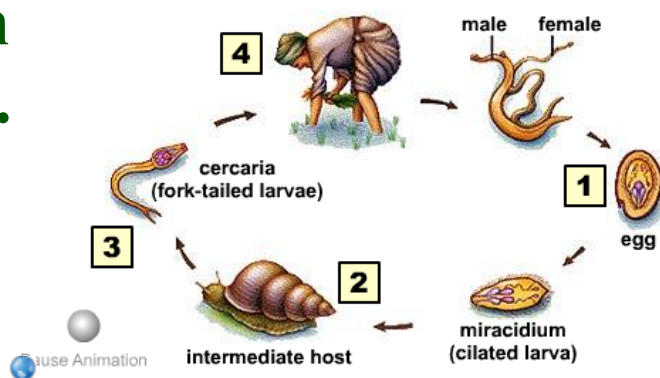


<http://www.ucmp.berkeley.edu/platyhelminthes/platyhelminthes.html>

Oct 17 - 10:45 PM

Schistosomiasis-  
bore through a  
host's skin in  
infected water.

Flukes usually  
have 2  
hosts.



[http://trc.ucdavis.edu/biosci10v/bis10v/media/ch16/blood\\_fluke.html](http://trc.ucdavis.edu/biosci10v/bis10v/media/ch16/blood_fluke.html)

Oct 17 - 10:49 PM

**Phylum  
Nematoda**

**Roundworms**

**They have a  
one-way  
digestive  
system.**

Oct 17 - 10:51 PM

**About 50  
roundworms  
species are  
plant or  
animal  
parasites.**

**Ascaris- eggs  
are carried  
through  
human  
waste to the  
soil. They are  
then ingested.**

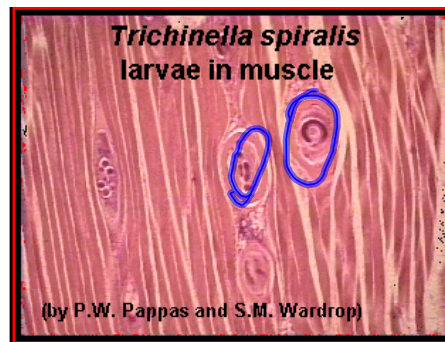
Oct 17 - 10:53 PM

The worms  
can enter the  
blood stream  
and be carried  
to the lungs  
or other  
places.



Oct 17 - 10:56 PM

Trichinosis- is a  
disease from  
eating  
pork that is not  
fully cooked.



http://www.biosci.ohio-state.edu/~parasite/trichinella.html

Oct 17 - 10:58 PM

**Page 654**  
**2-11**