

Flatworms have a middle tissue layer called mesoderm and they also have

Organs.

**Phylum  
Platyhelminthes**



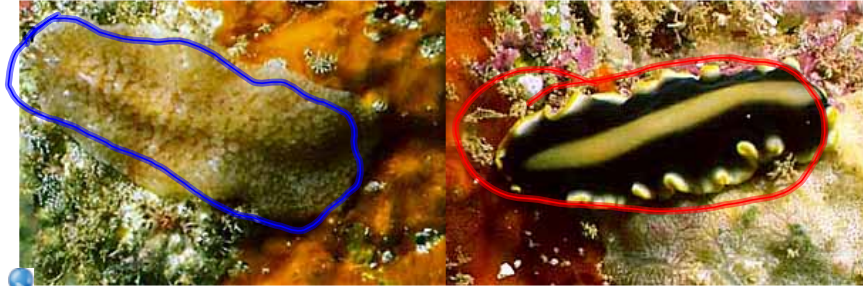
<http://www.ucmp.berkeley.edu/platyhelminthes/platyhelminthes.html>

Oct 17 - 10:30 PM

**The flatworm  
is flat so things  
diffuse  
through the  
solid body.**

Oct 17 - 10:35 PM

Class Turbellaria  
Free-living marine flatworms  
↳ salt H<sub>2</sub>O



<http://www.ucmp.berkeley.edu/platyhelminthes/platyhelminthes.html>

Oct 17 - 10:36 PM

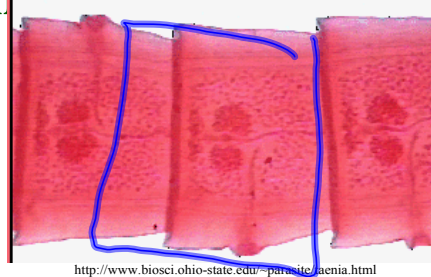
Class  
Cestoda  
ex tapeworms  
They attach  
themselves to  
their host's  
intestines.



<http://www.parasitecleanse.com/GALLERY.HTM>

Oct 17 - 10:37 PM

Tapeworms grow by adding  
proglotids (rectangular body  
sections that are a complete  
reproductive unit)



Oct 17 - 10:39 PM

The sections  
are added and  
the tapeworm  
can get to be  
40 feet long.

Beef tapeworm  
lives in the muscle  
tissue of infected  
cattle where  
they are enclosed  
in cysts.

Oct 17 - 10:42 PM

## Class Trematoda

Largest class called flukes.

They have a tegument (thick protective covering) so they are not digested by their hosts.

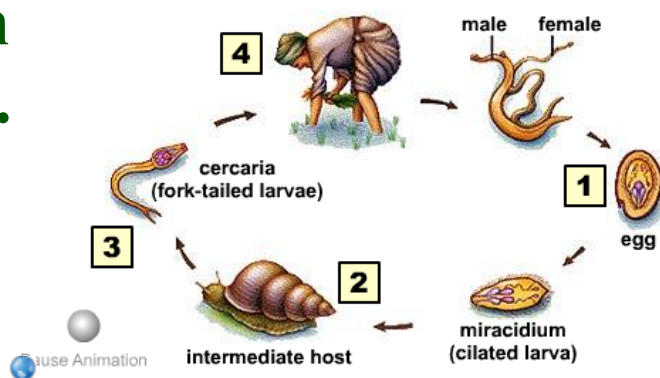


<http://www.ucmp.berkeley.edu/platyhelminthes/platyhelminthes.html>

Oct 17 - 10:45 PM

Schistosomiasis-  
bore through a  
host's skin in  
infected water.

Flukes usually  
have 2  
hosts.



[http://trc.ucdavis.edu/biosci10v/bis10v/media/ch16/blood\\_fluke.html](http://trc.ucdavis.edu/biosci10v/bis10v/media/ch16/blood_fluke.html)

Oct 17 - 10:49 PM

**Phylum  
Nematoda**

**Roundworms**

They have a  
One-way  
digestive  
system.

Oct 17 - 10:51 PM

About 50  
roundworms  
species are  
plant or  
animal  
parasites.

Ascaris- eggs  
are carried  
through  
human  
waste to the  
soil. They are  
then ingested.

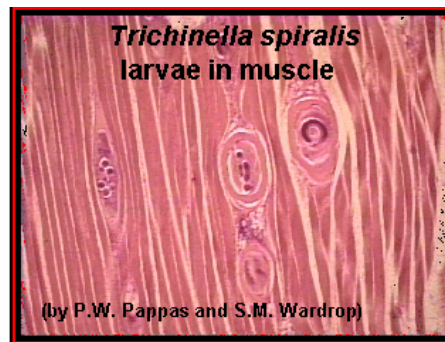
Oct 17 - 10:53 PM

The worms  
can enter the  
blood stream  
and be carried  
to the lungs  
or other  
places.



Oct 17 - 10:56 PM

Trichinosis- is a  
disease from  
eating  
pork that is not  
fully cooked.



<http://www.biosci.ohio-state.edu/~parasite/trichinella.html>

Oct 17 - 10:58 PM

**Page 654**  
**2-11**