

Primary Productivity- the rate at which organic material is produced by photosynthetic organisms in an ecosystem

This determines the amount of energy available in an ecosystem.

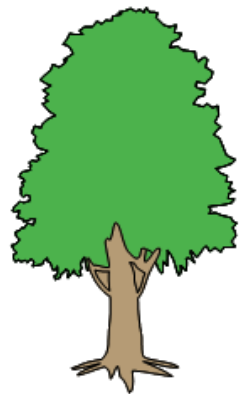
Consumers

organisms that
Consume plants or
other organisms to
obtain the energy
necessary to build their
molecules



Producers

make energy
Storing
molecules from
sunlight



Animals are classified by their diet.

Carnivores- eat meat

Omnivores- eat both meat and plants

Herbivores- eat plants



Detritivores- organisms that obtain their energy from the organic waste and dead bodies

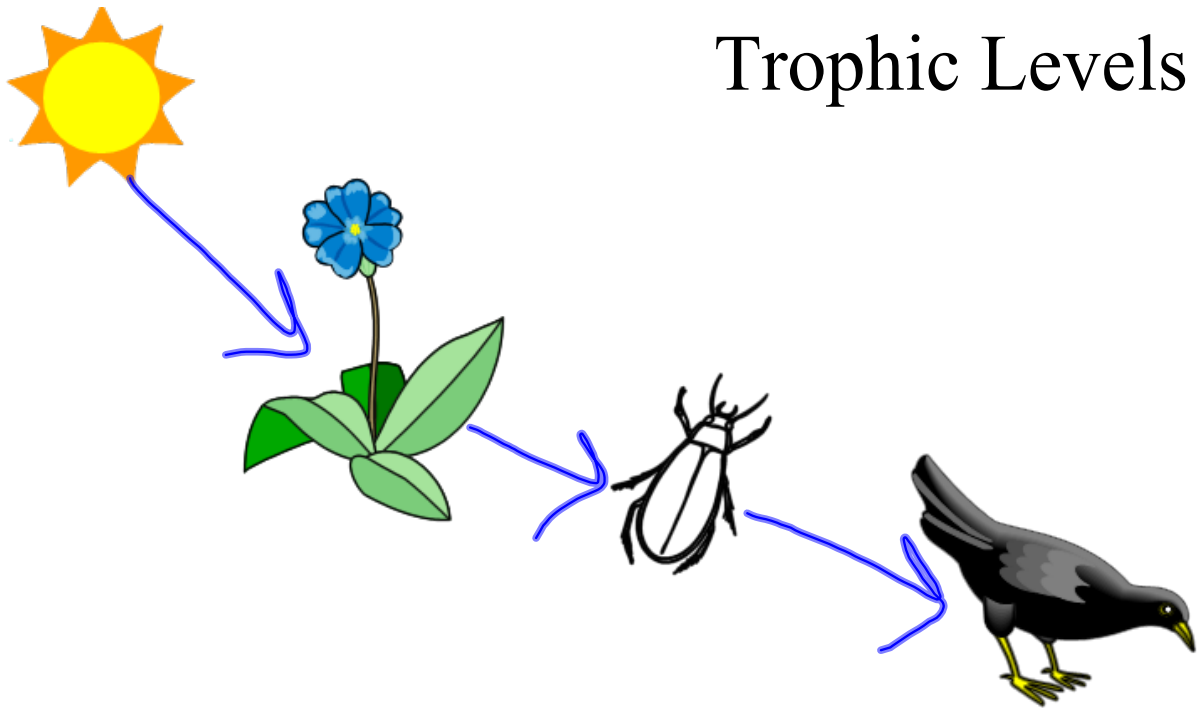
Fungi

Bacteria

Worms



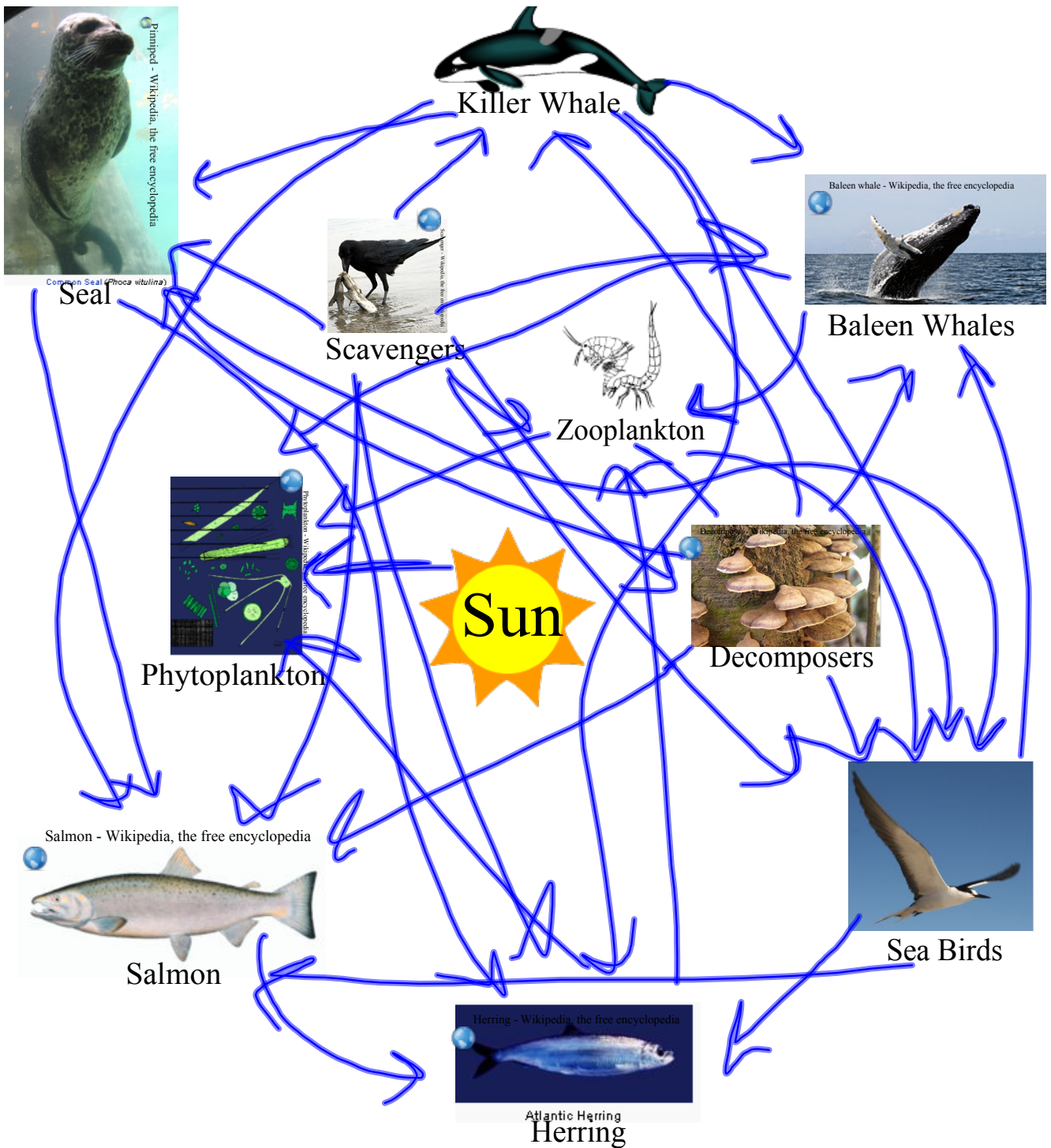
Trophic Levels

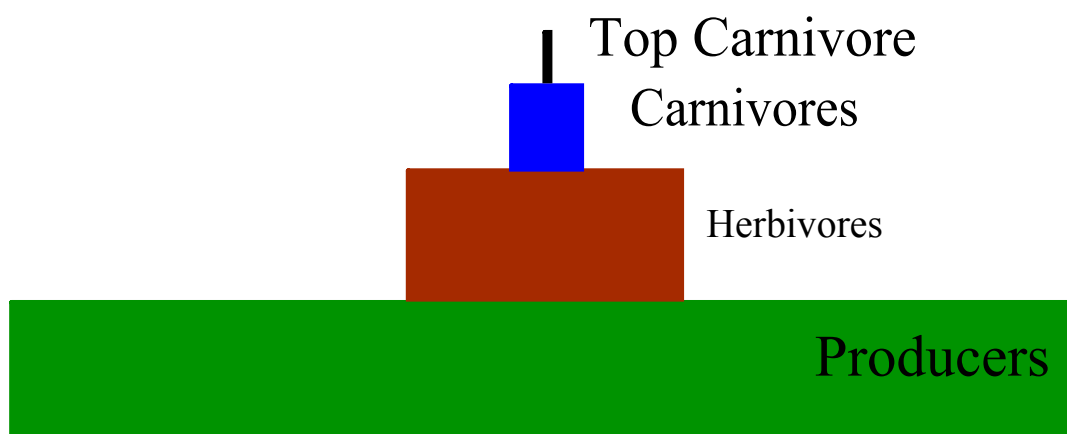


Food Chain

What is a food web?

bunch of food
chains put
together





10 % Rule

