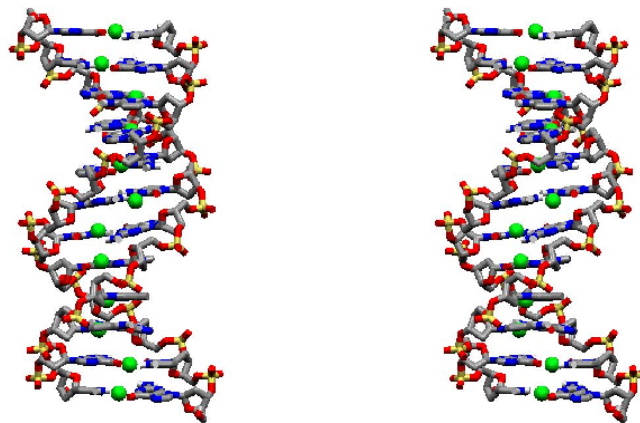


## Chapter 6-1 Notes

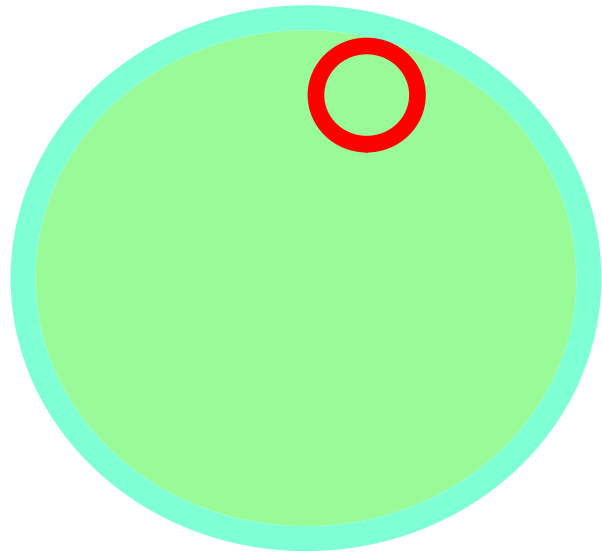


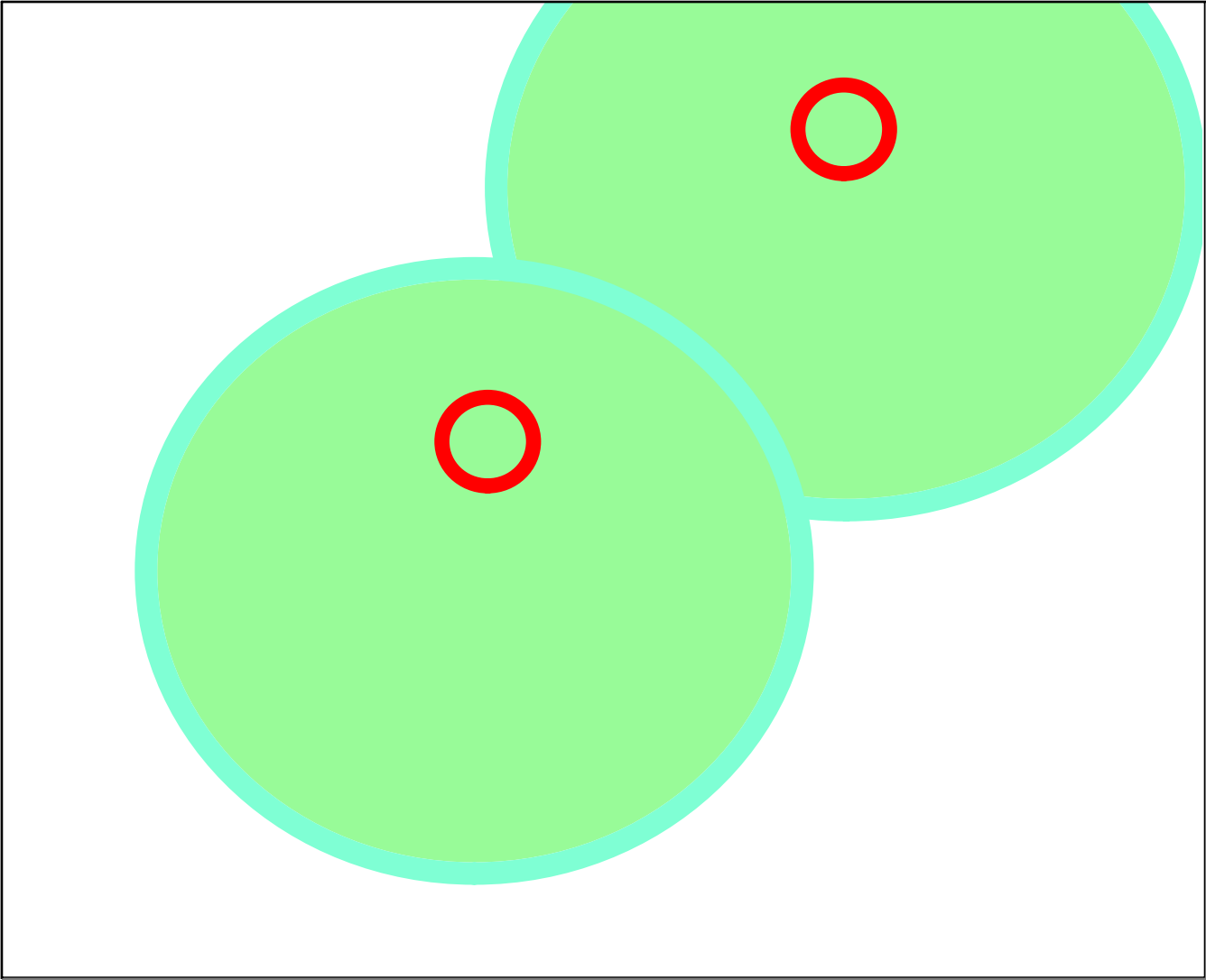
<http://duke.usask.ca/~paa151/mdna.jpg>

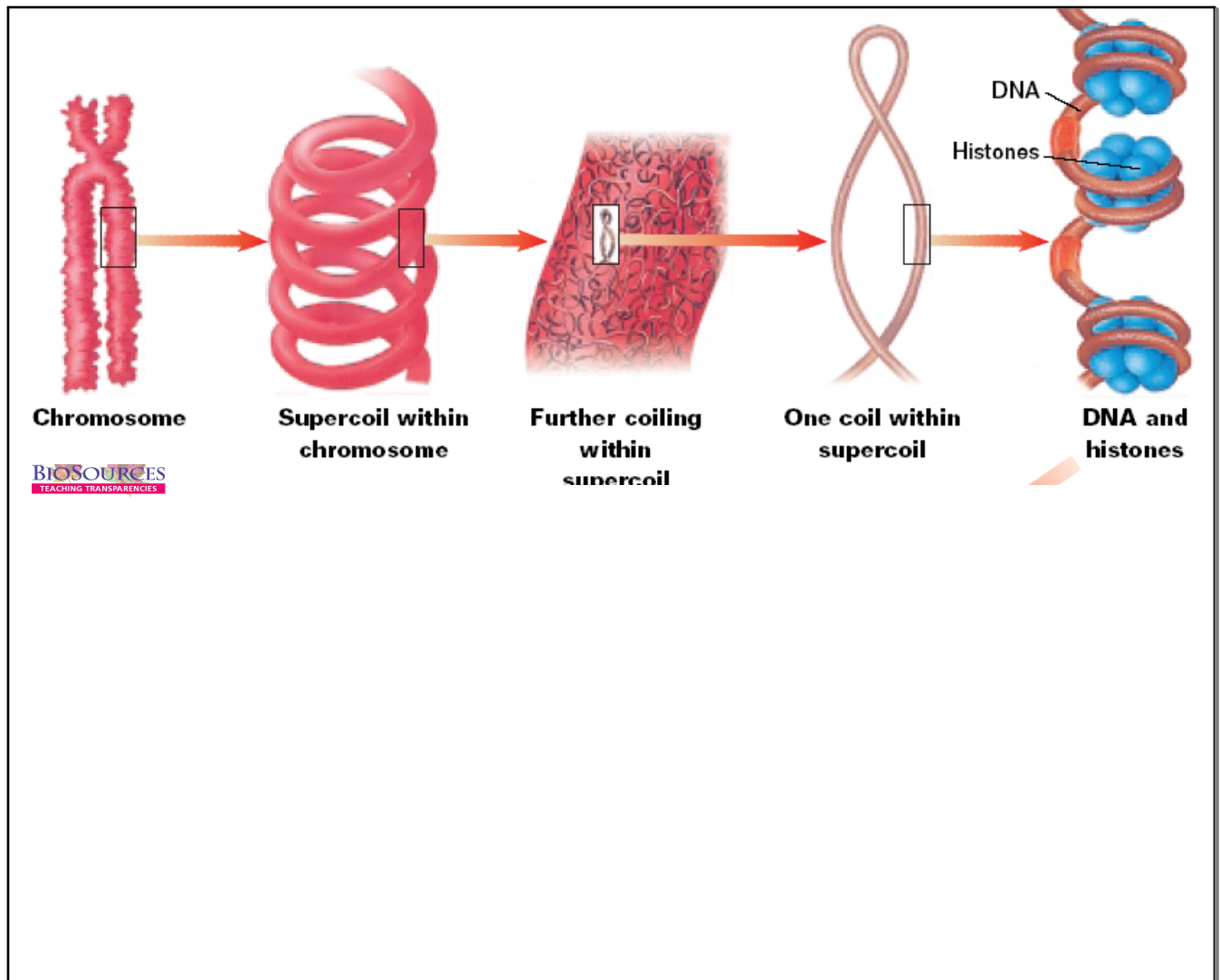
What would happen if part of this was deleted or not copied when a new cell was made.

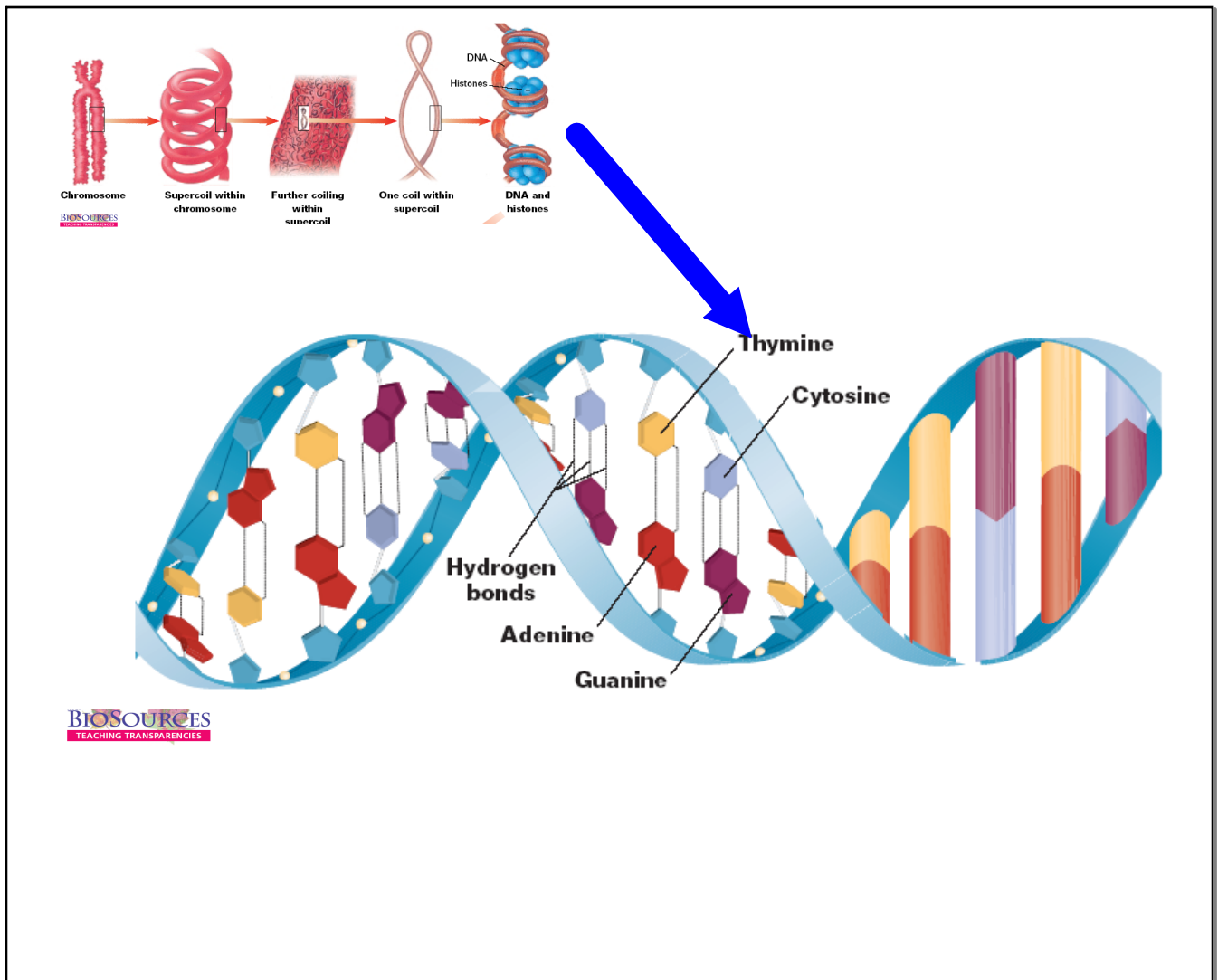
## Bacterial Cells

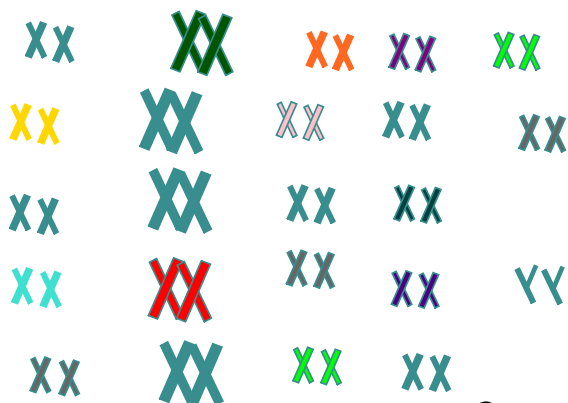
Binary fission- a form of asexual reproduction that produces identical offspring.



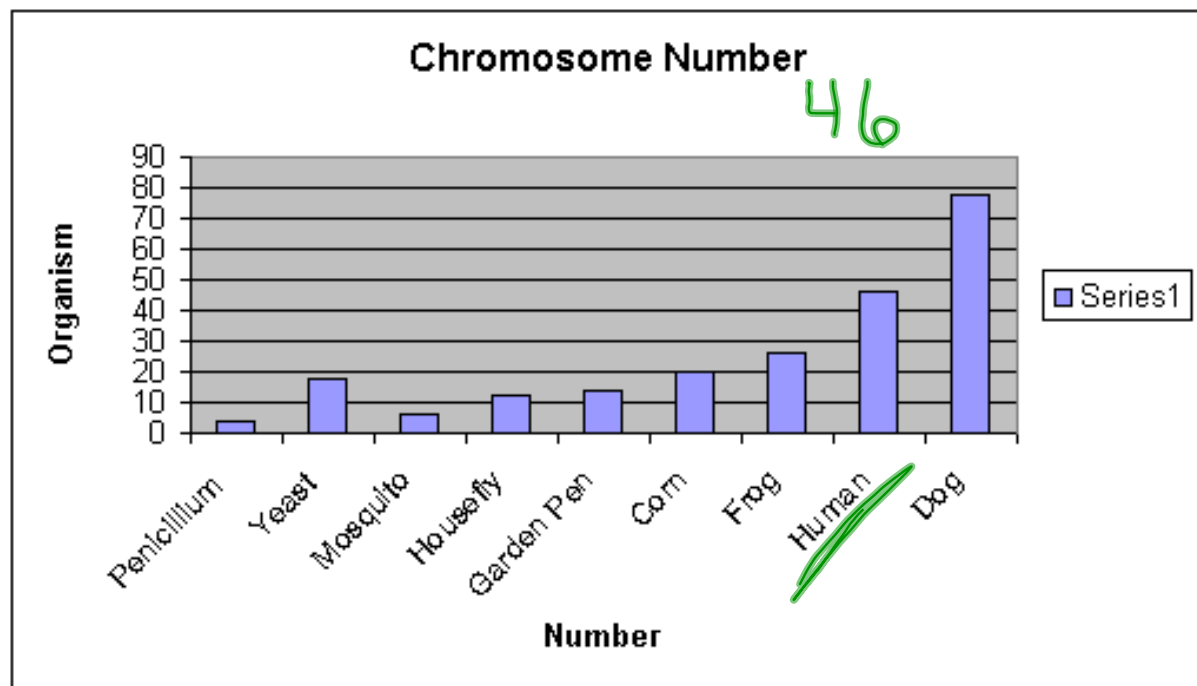


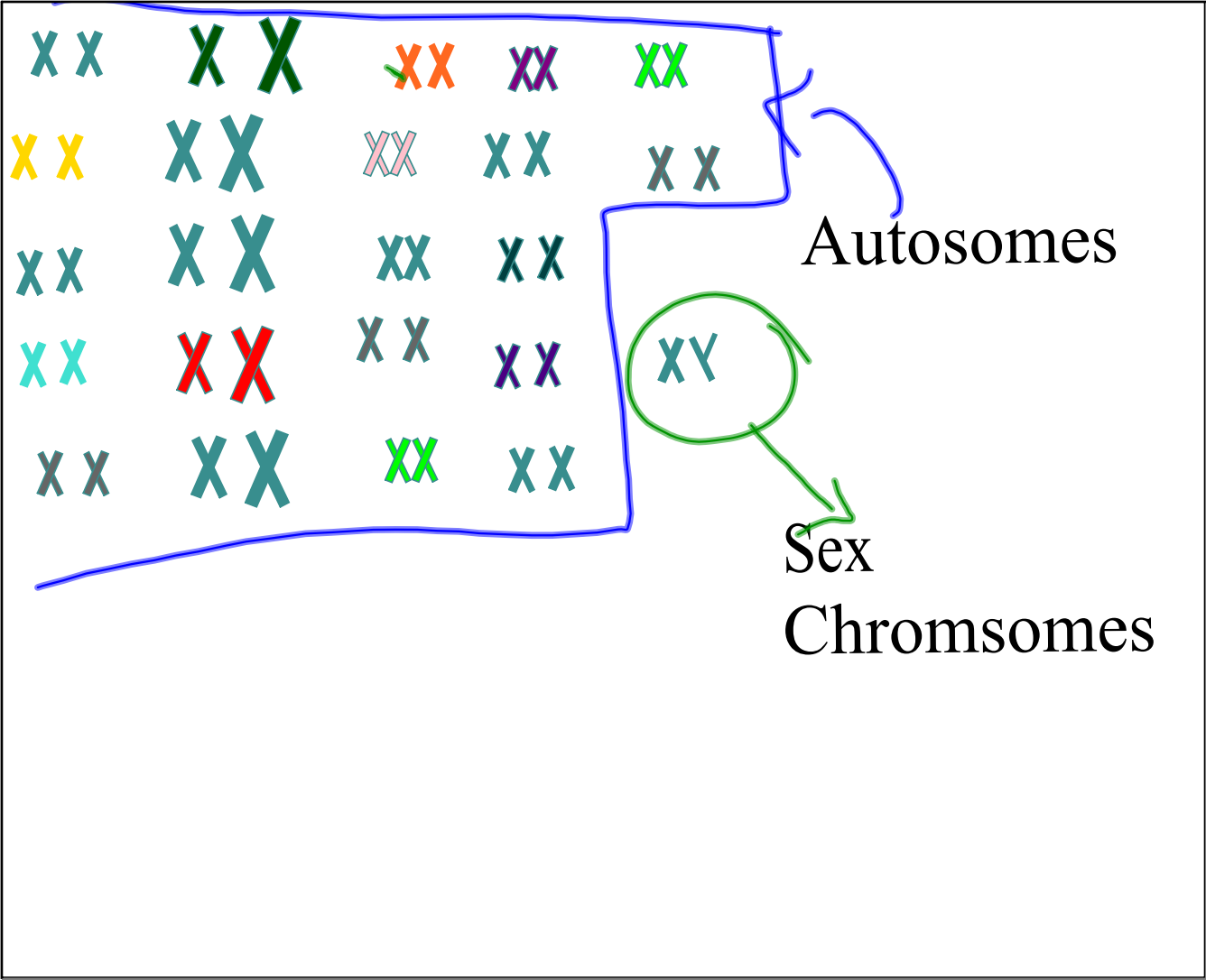






Zygote- a fertilized  
egg cell, the first cell of a  
 new individual





Autosomes

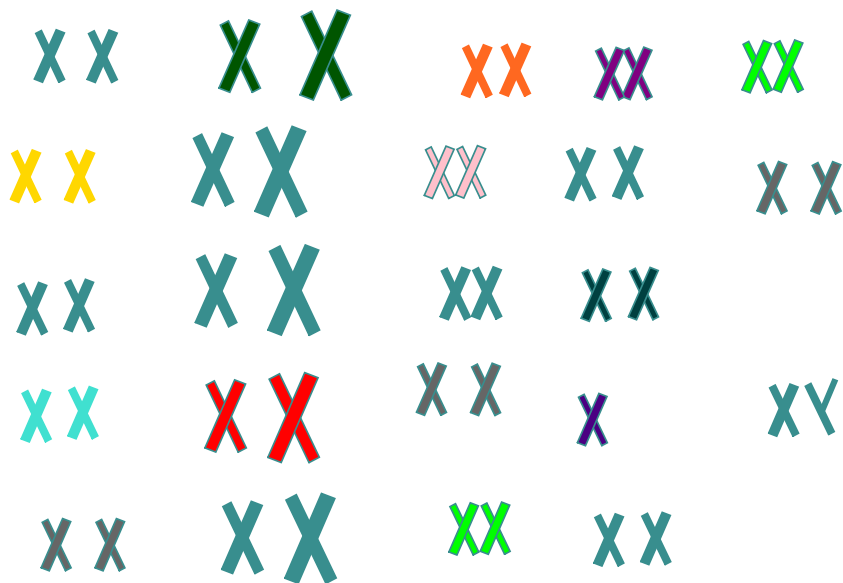
chromosomes  
that are ) NOT  
involved in  
determining the  
sex

Sex  
Chromosomes

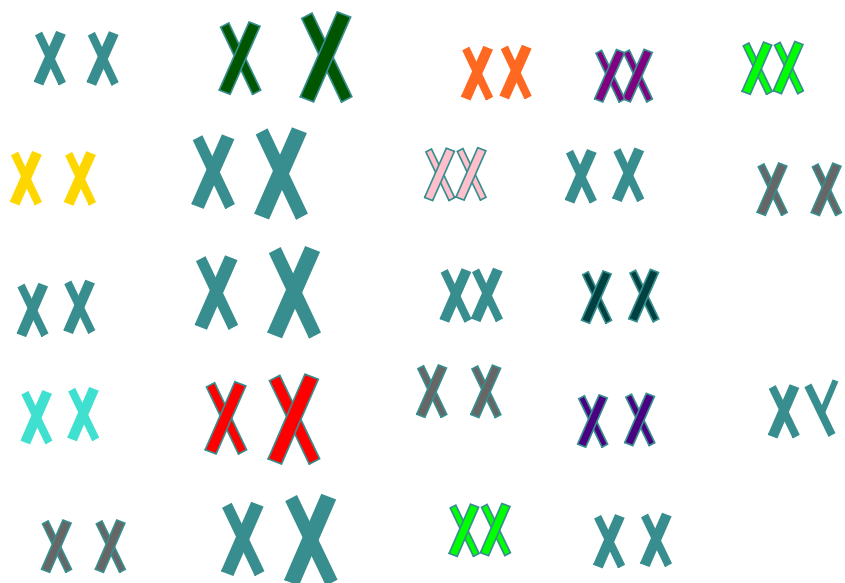
XY - male

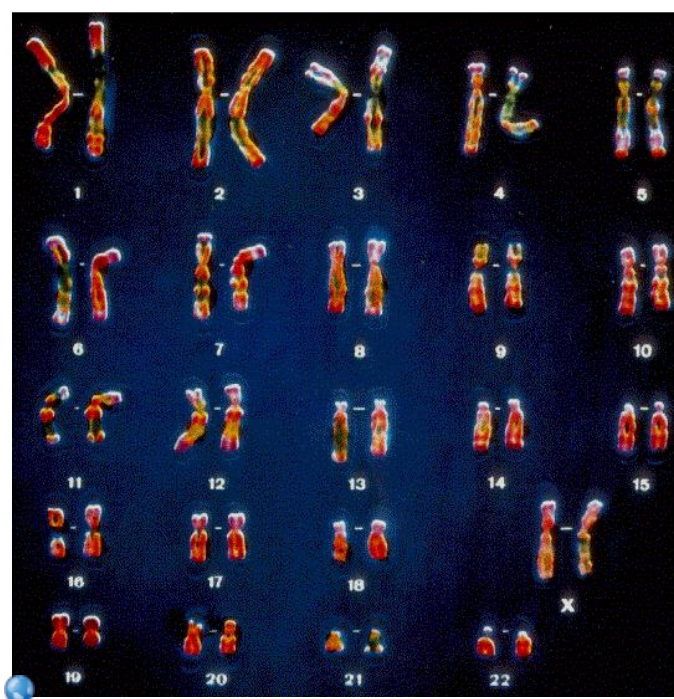
XX - female

What if missing one?

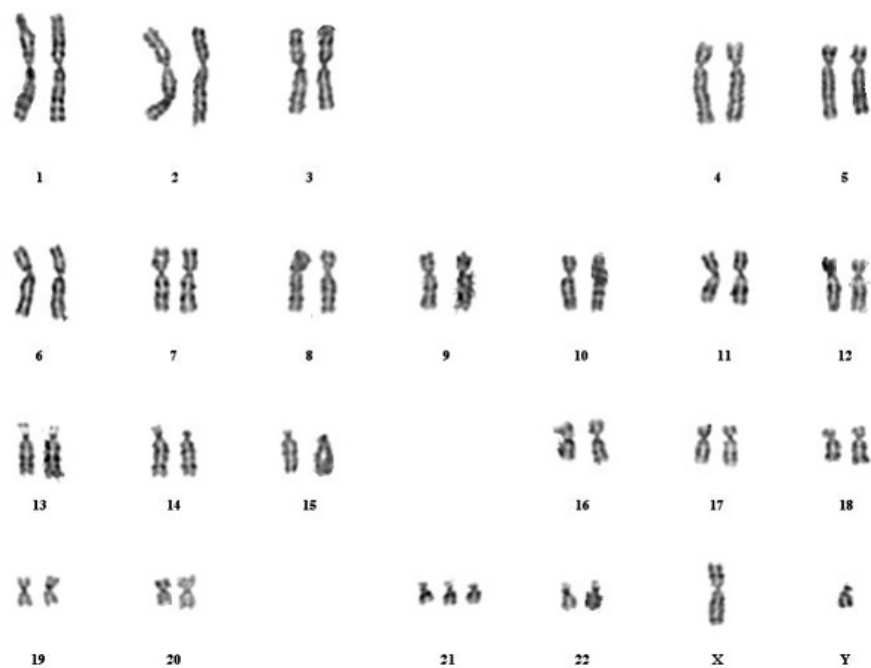


What if there is an extra one?





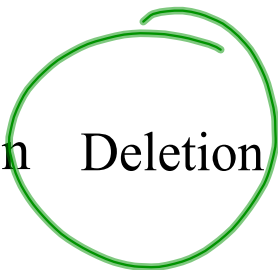
<http://www.familystudies.org/karyotype.jpg>

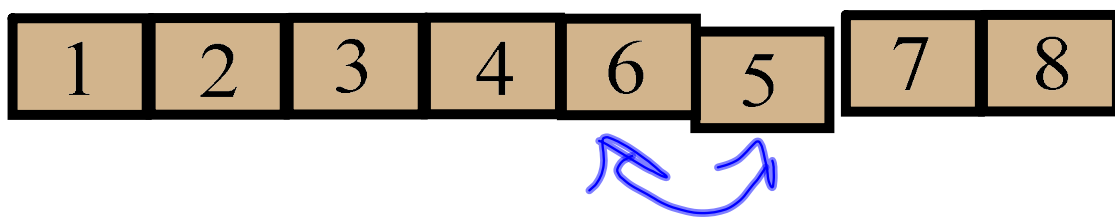


<http://www.health.gov.mt/impacedcard/issue/issue13/0311/fig4.jpg>

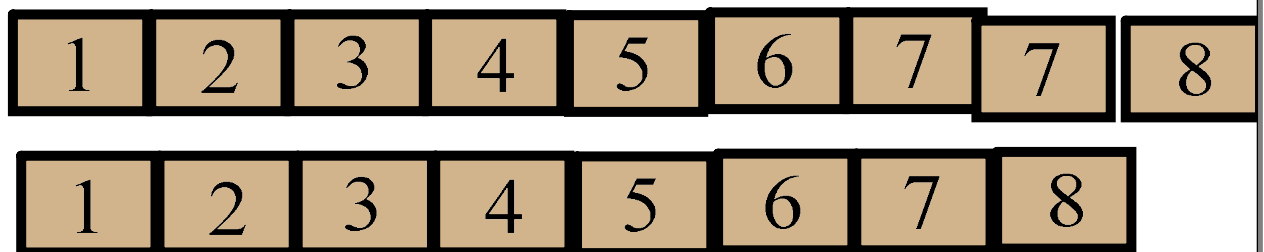


Translocation   Deletion   Inversion   Duplication





Translocation   Deletion   Inversion   Duplication



Translocation

Deletion

Inversion

Duplication



Translocation    Deletion    Inversion    Duplication