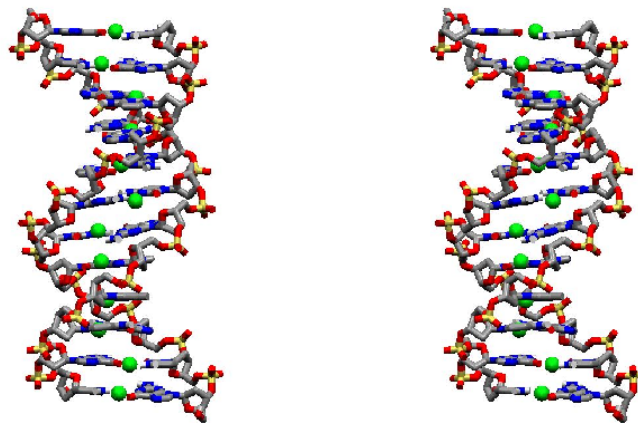


Chapter 6-1 Notes

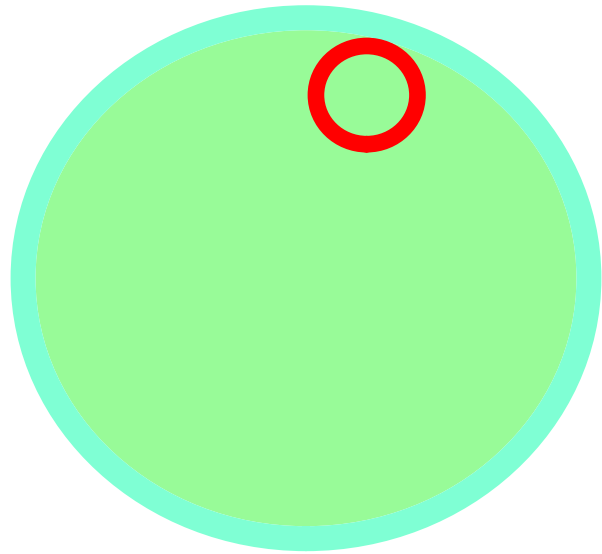


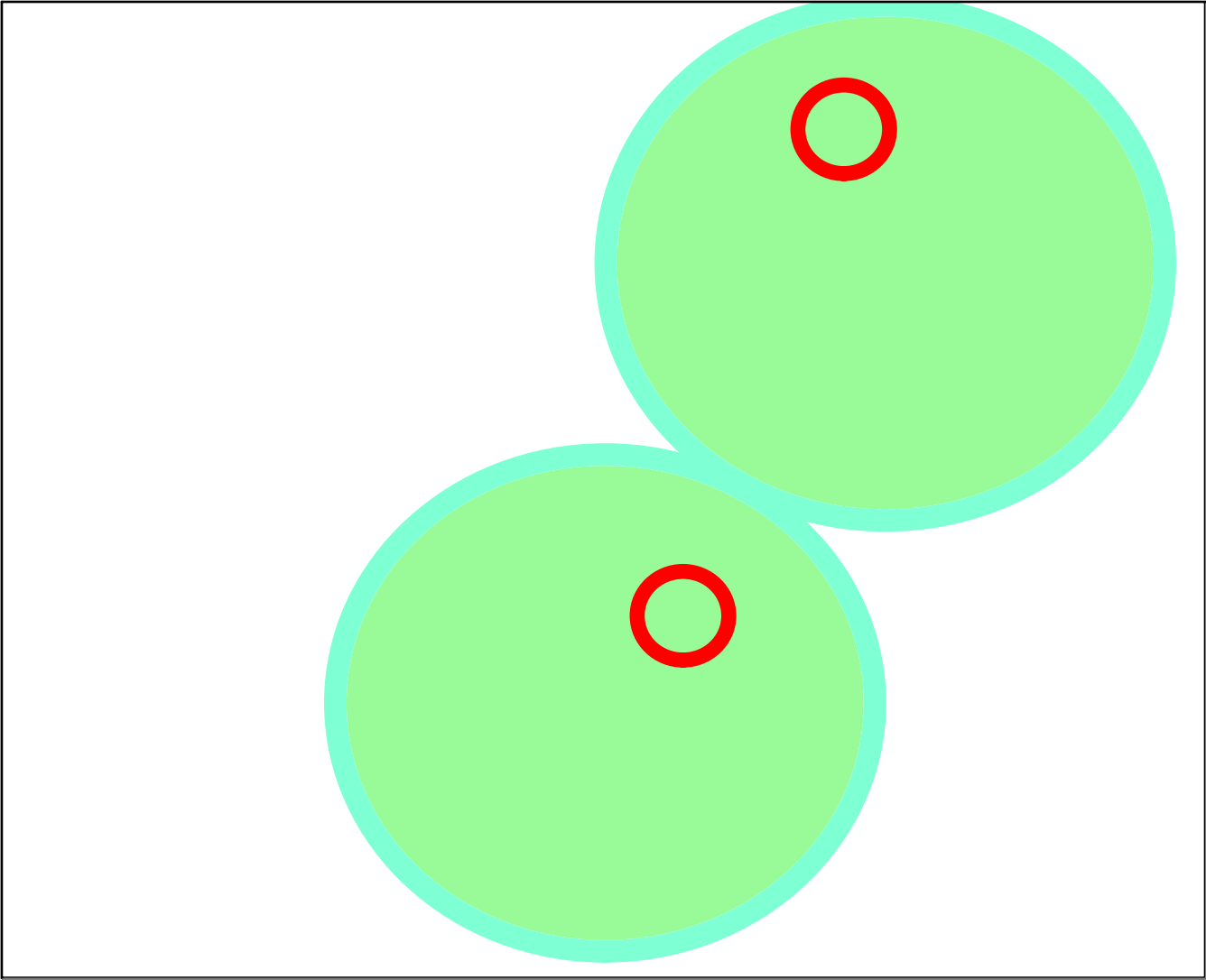
<http://duke.usask.ca/~paa151/mdna.jpg>

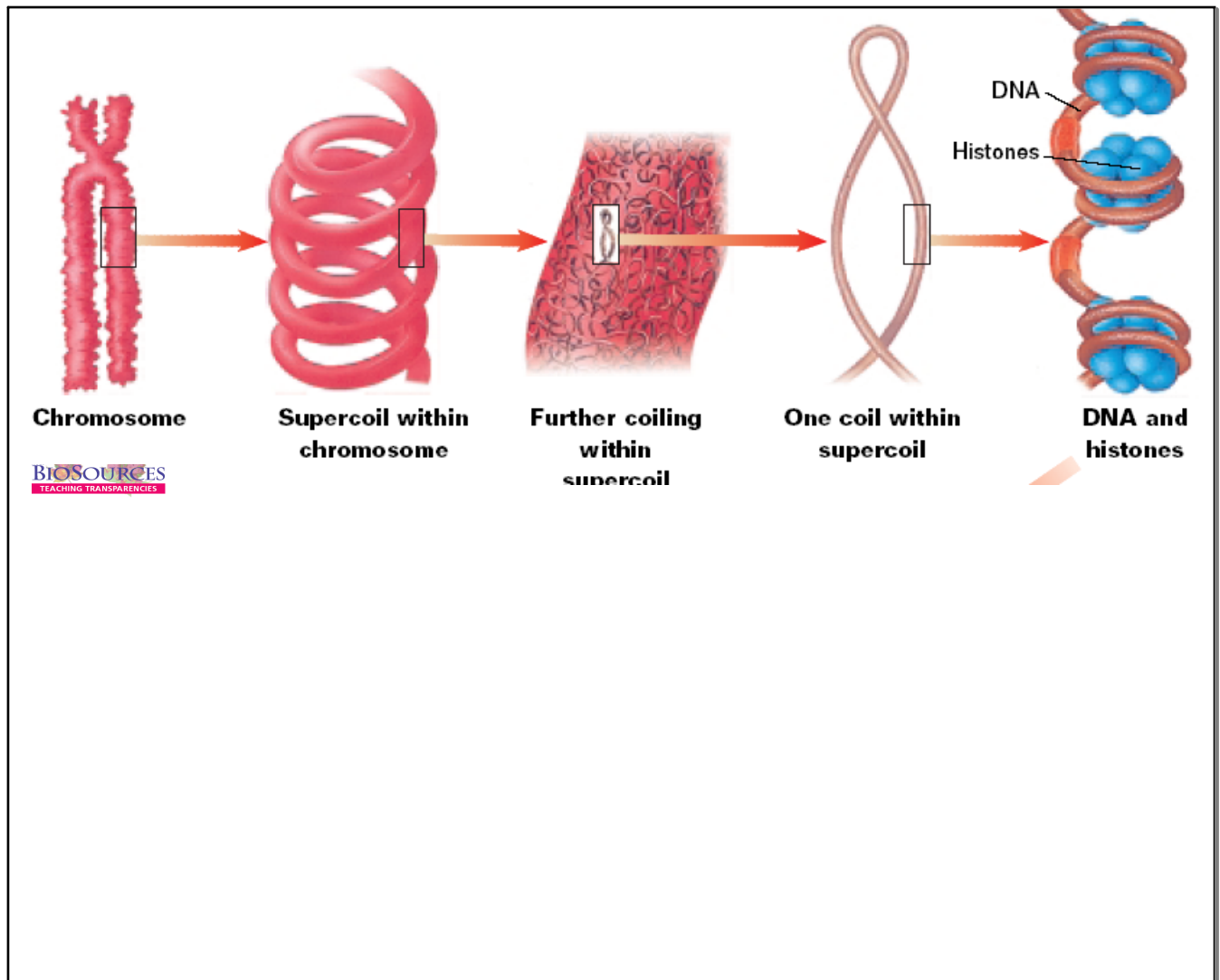
What would happen if part of this was deleted or not copied when a new cell was made.

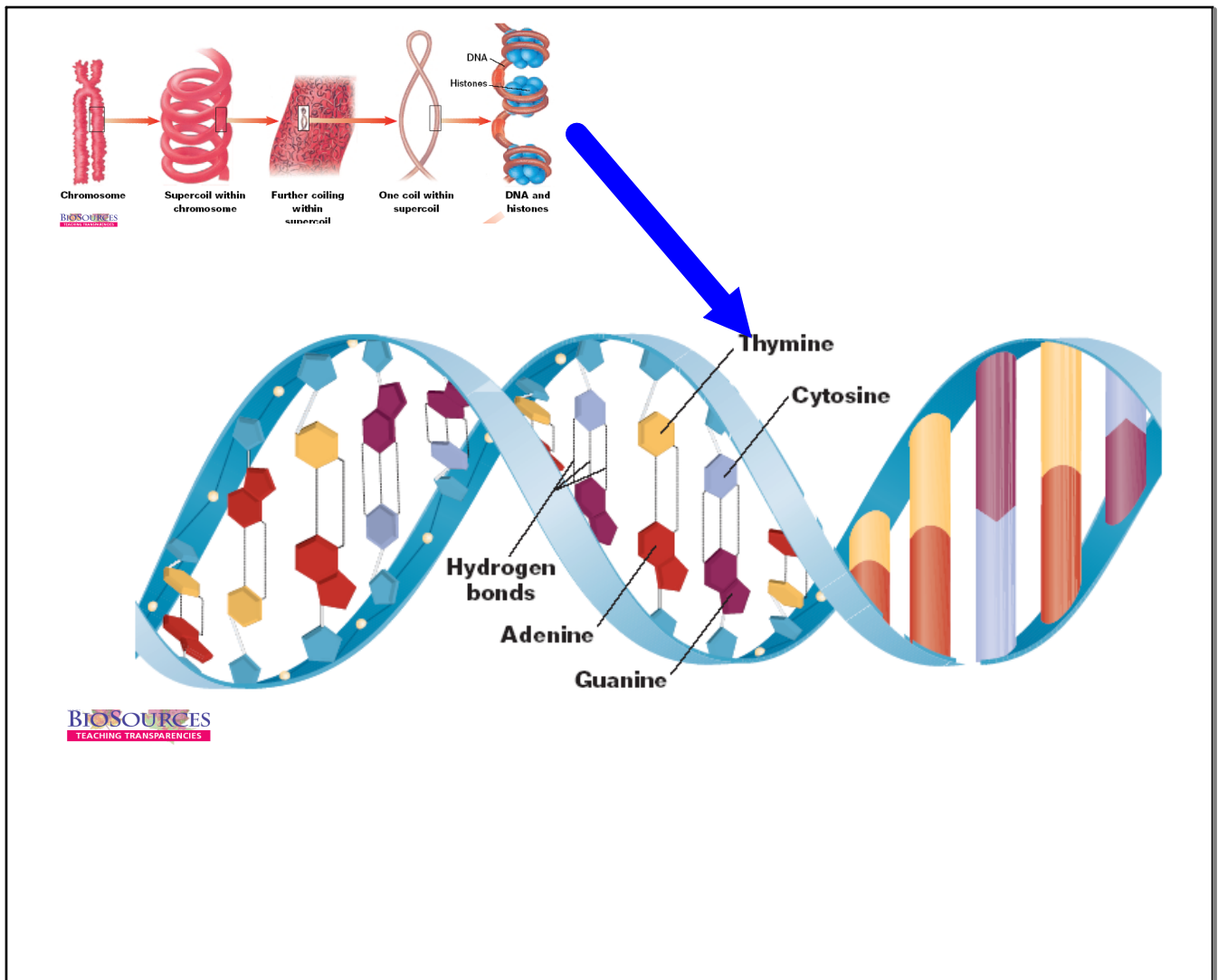
Bacterial Cells

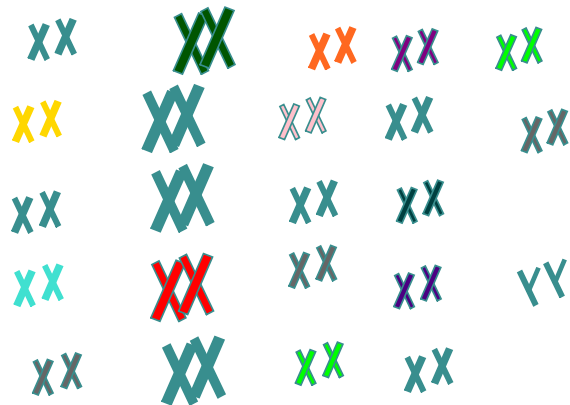
Binary fission- a form of asexual reproduction that produces identical offspring.



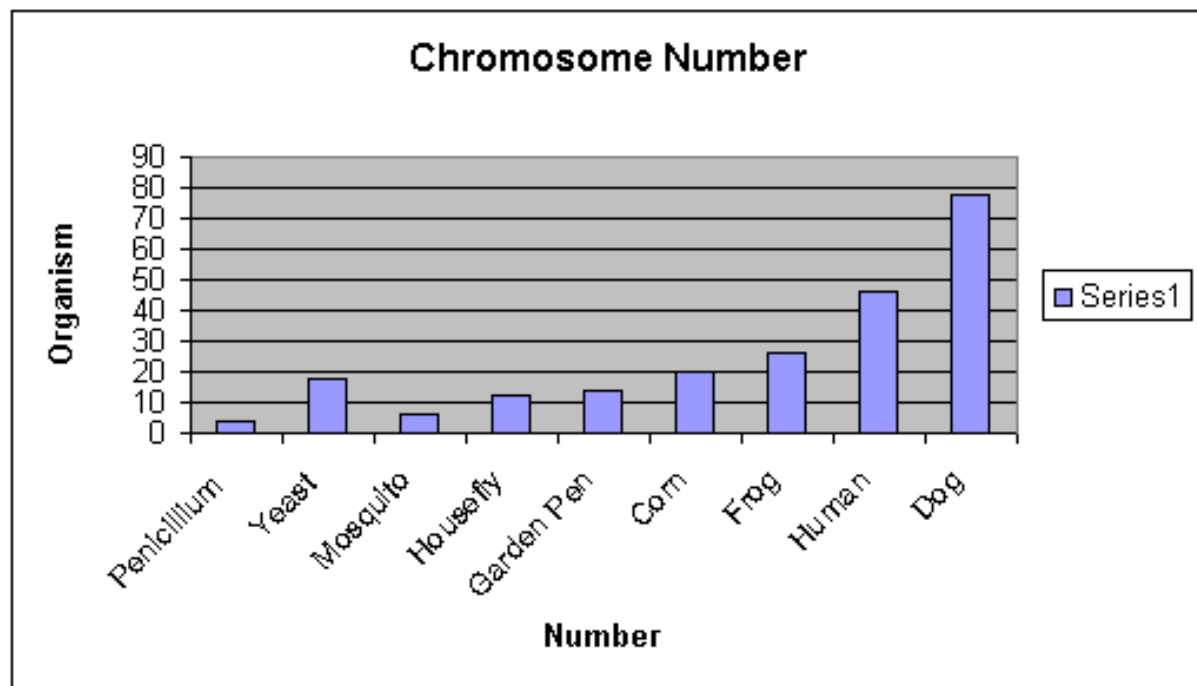


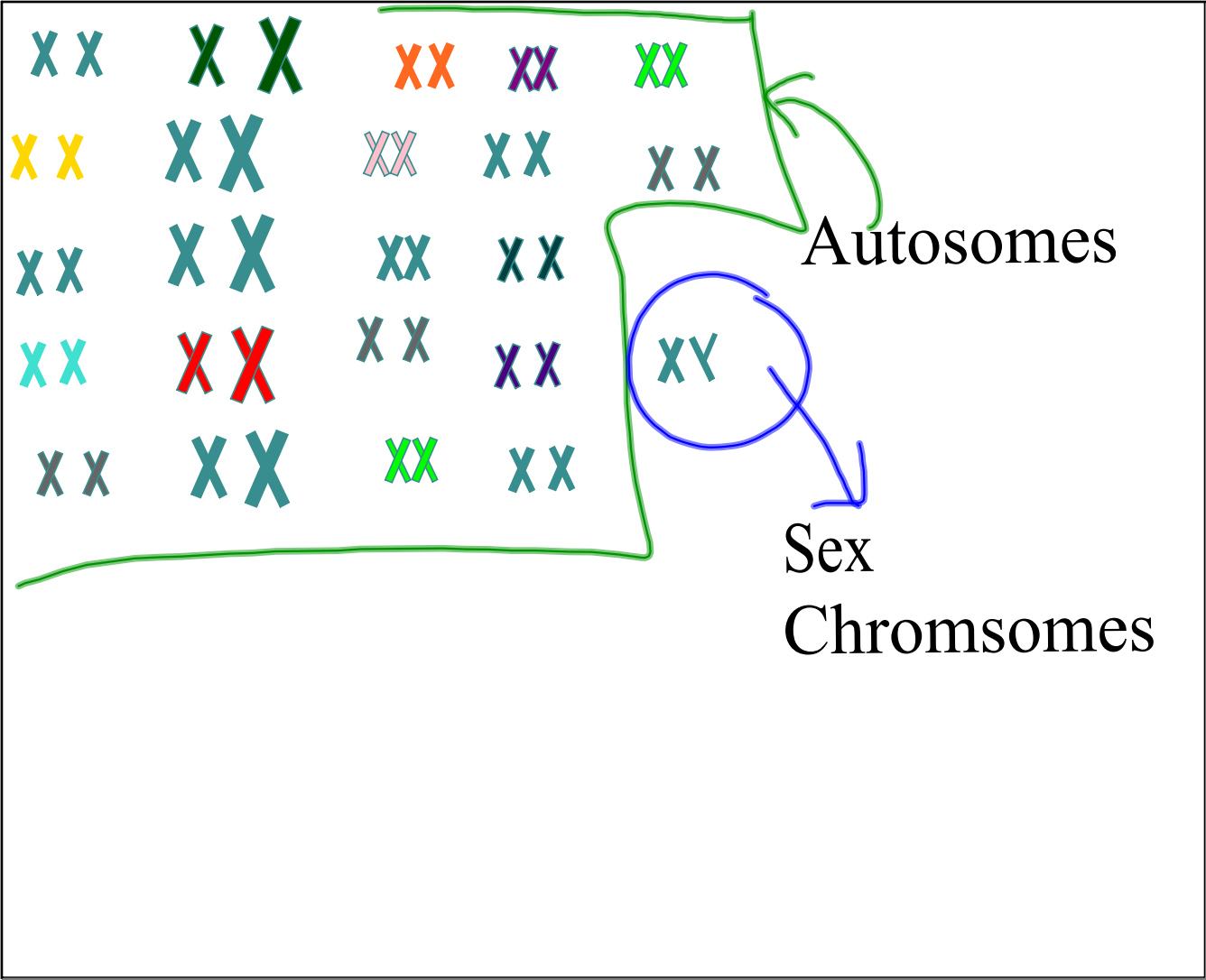






Zygote- a fertilized
egg cell, the first cell of a
 new individual





Autosomes

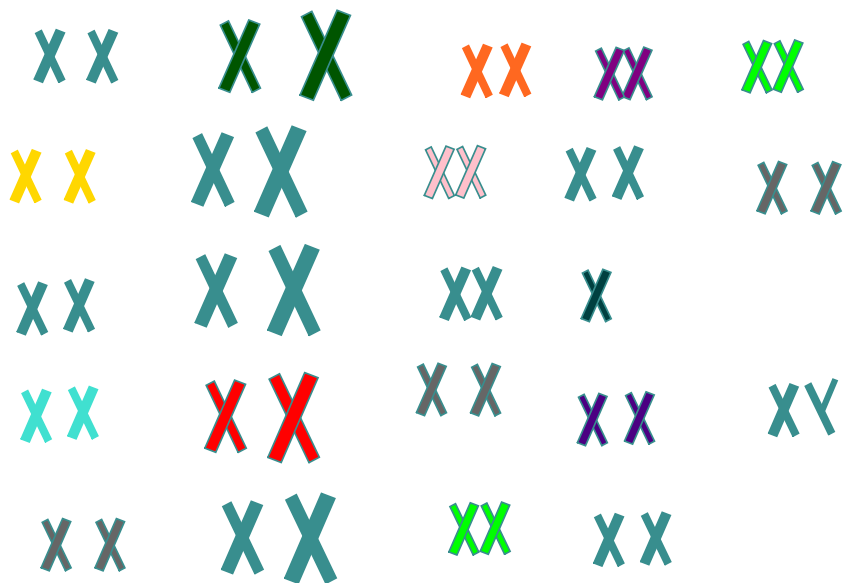
chromosomes
that are) NOT
involved in
determining the
sex

Sex
Chromosomes

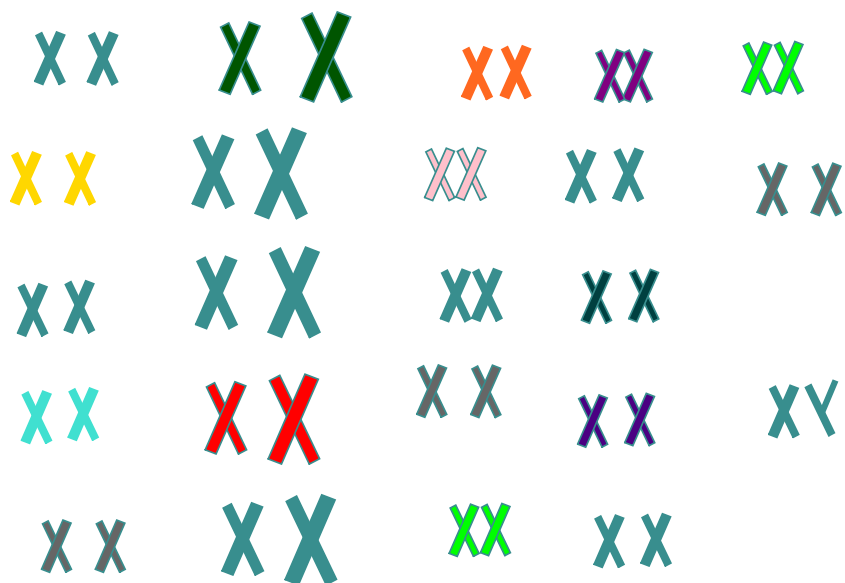
XY - male

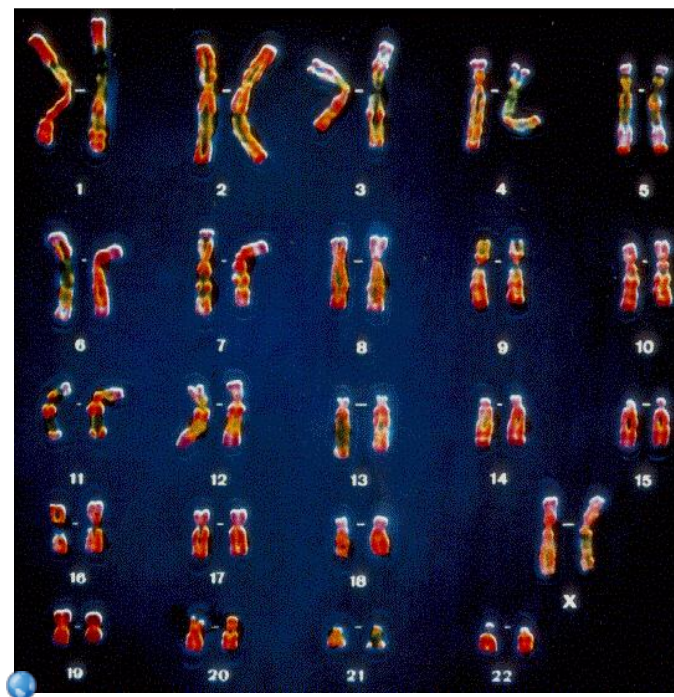
XX - female

What if missing one?

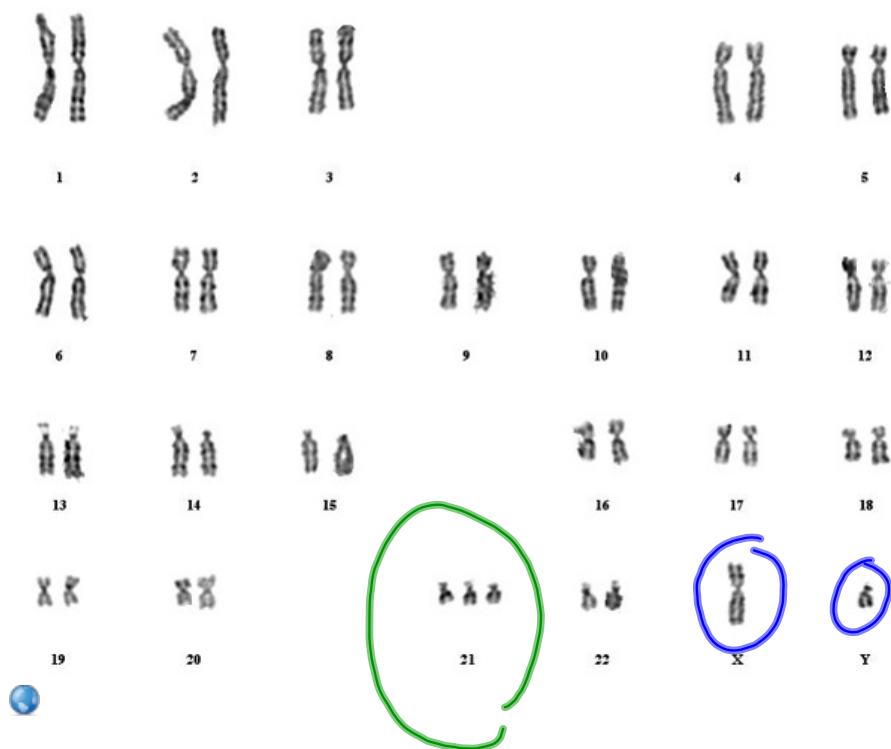


What if there is an extra one?





<http://www.familystudies.org/karyotype.jpg>



<http://www.health.gov.mt/impacedcard/issue/issue13/0311/fig4.jpg>

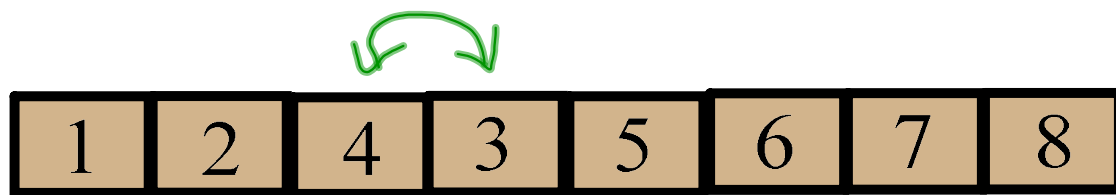


Translocation

Deletion

Inversion

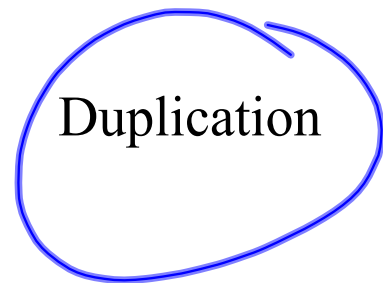
Duplication

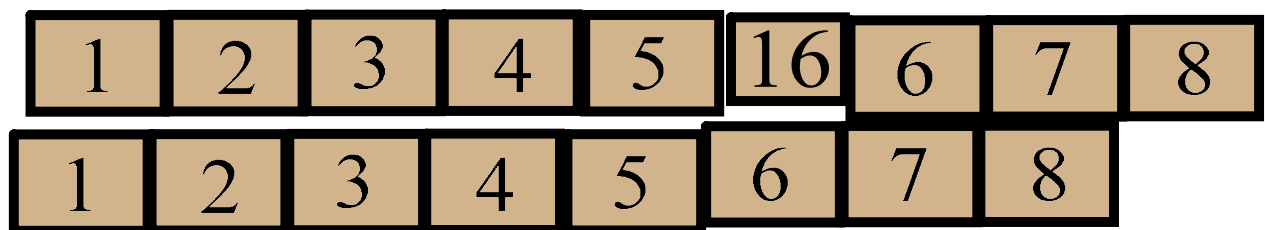


Translocation Deletion Inversion Duplication



Translocation Deletion Inversion Duplication





Translocation

Deletion

Inversion

Duplication