

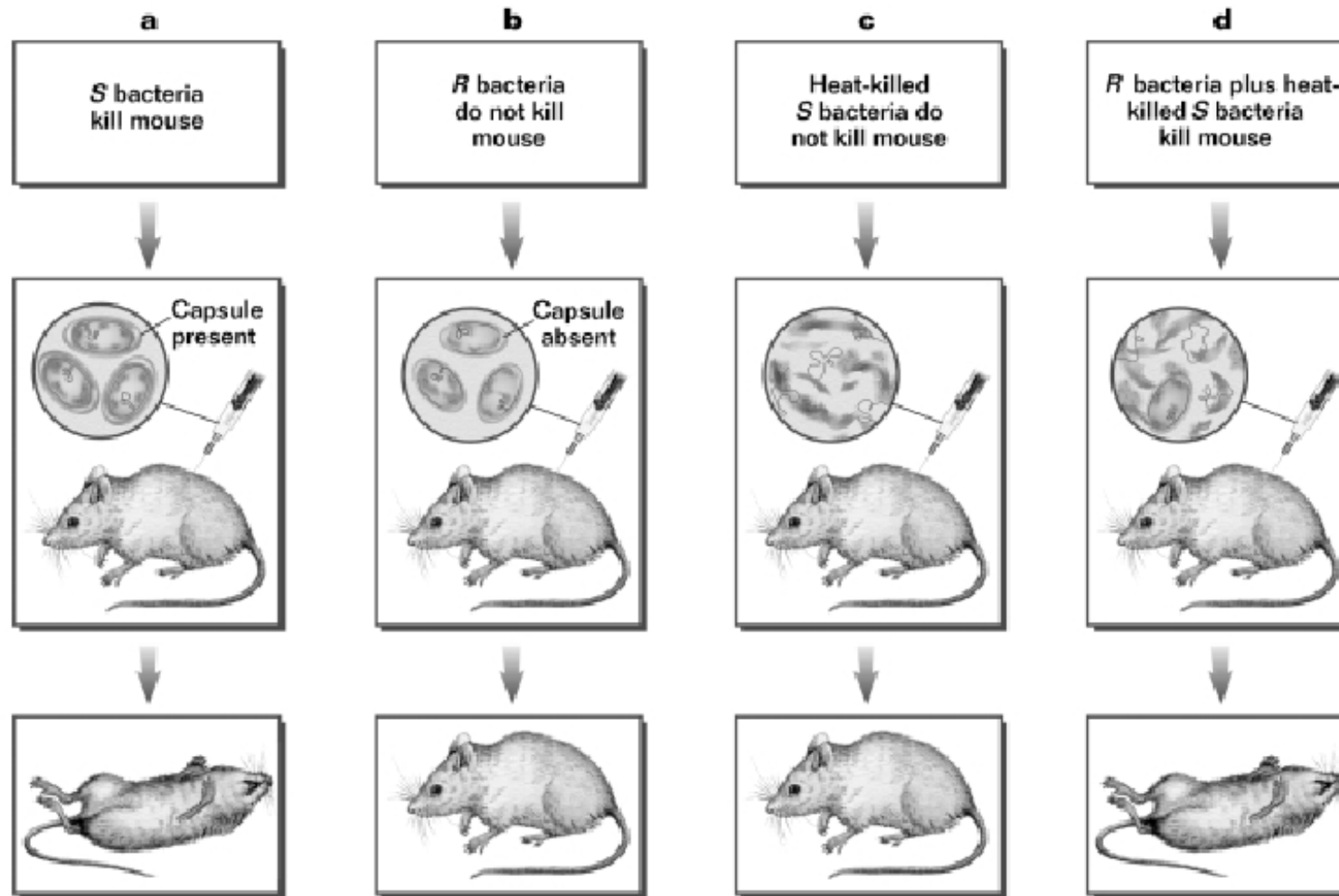
Mendel answered the
_____ of why you
look like your _____,
but he did not say what
_____ looked like.

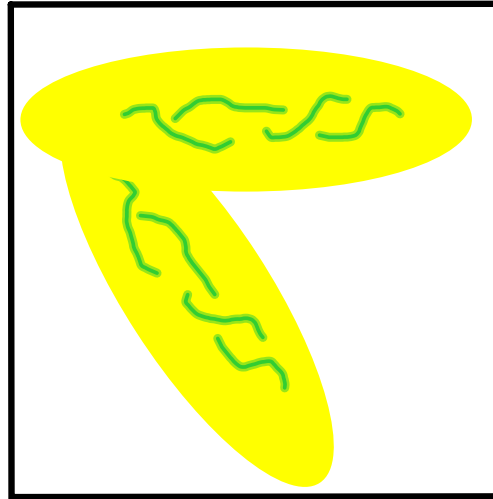
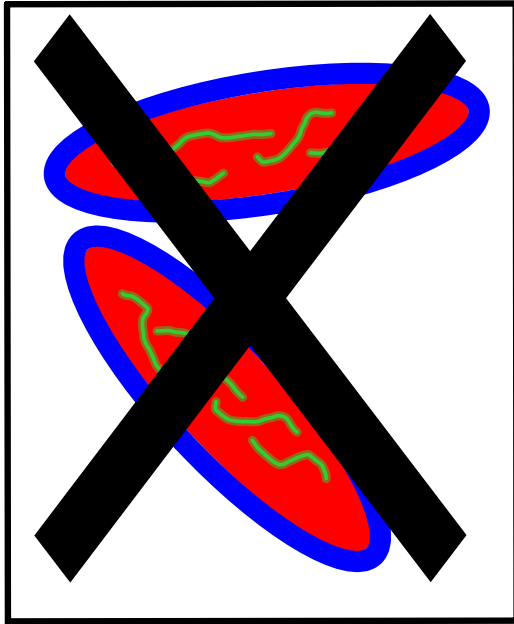
Frederick Giffith was
trying to make a
_____ against the
bacteria that causes
_____. He made a
_____ discovery
instead.

A _____ is a substance that is made from _____ or weakened _____ and given to the body to protect against _____ infections.

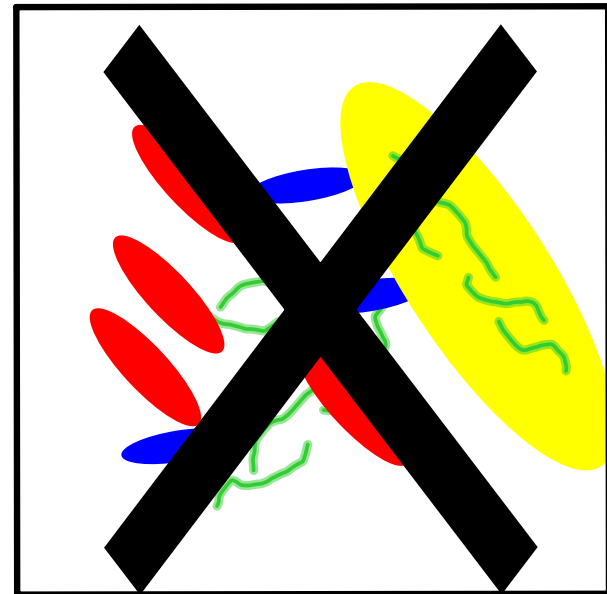
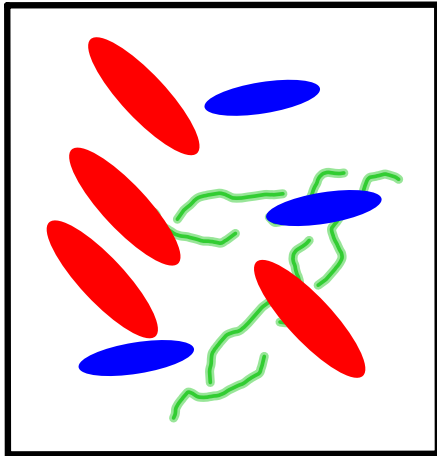
Griffith was working with _____ types of bacteria.







Why?



Some how the
bacteria under
went

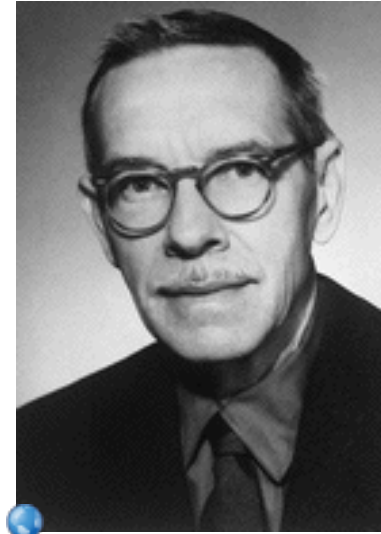
Oswald
_____ in
1944 showed
that _____ is
responsible for
_____.



<http://profiles.nlm.nih.gov/CC/Views/Exhibit/narrative/biographical.html>

Hershey and Chase

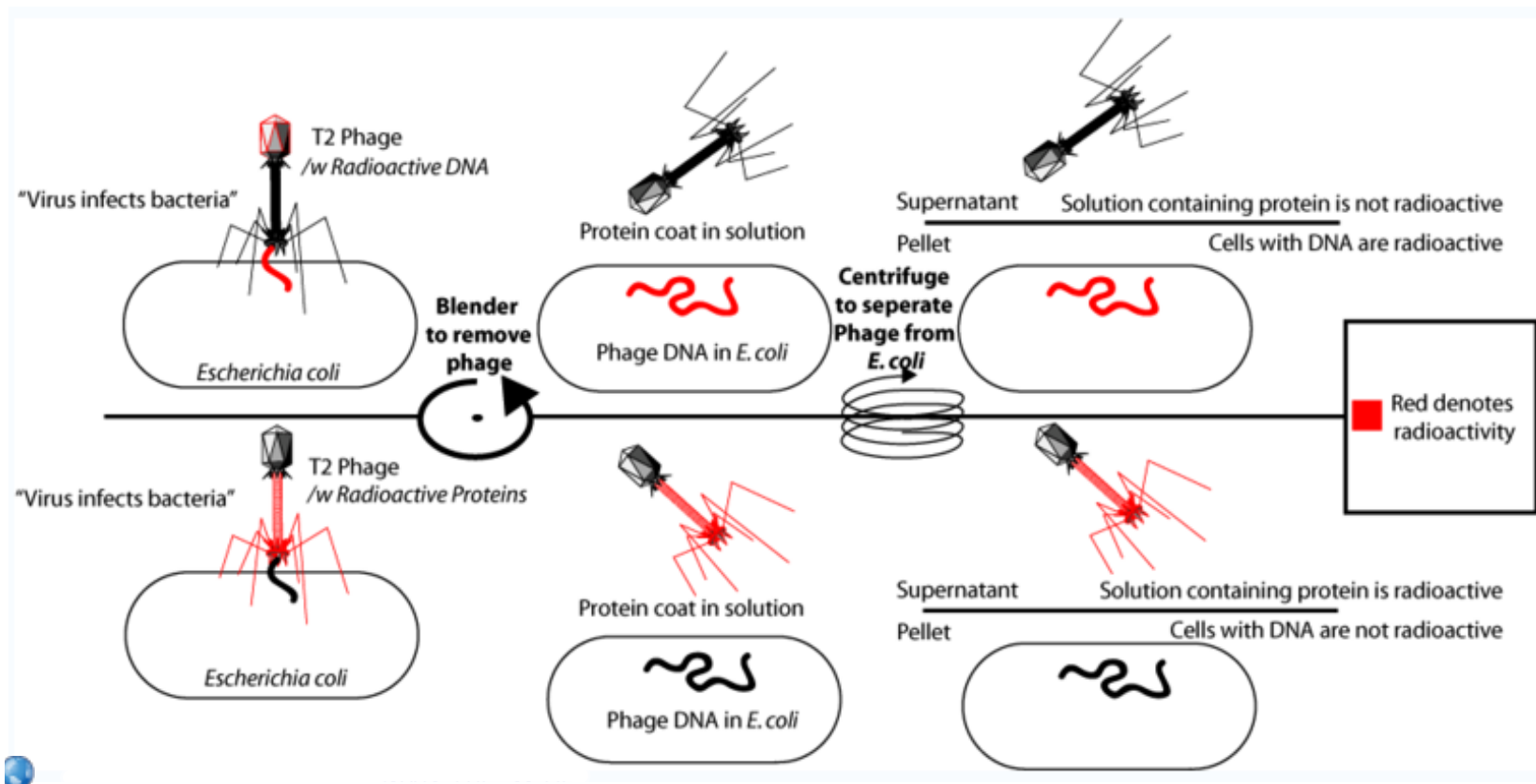
Bacteriophage-
 that infect
bacteria



Ashley Hershey

http://nobelprize.org/nobel_prizes/medicine/laureates/1969/hershey-bio.html





<http://en.wikipedia.org/wiki/Image:HersheyChaseEx.png>