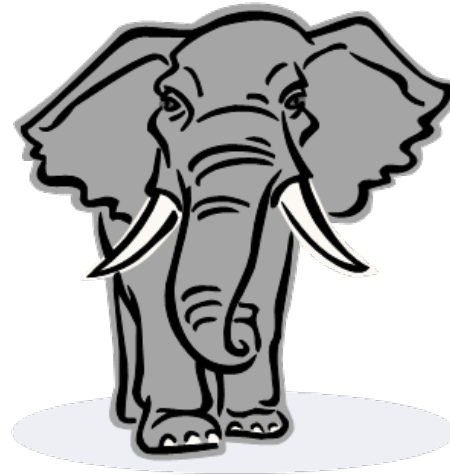


Compare and Contrast



<http://www.caudata.org/daphnia/>



When Linnaeus classified animals in the 1700's, he counted 4,326. There are now over a million.

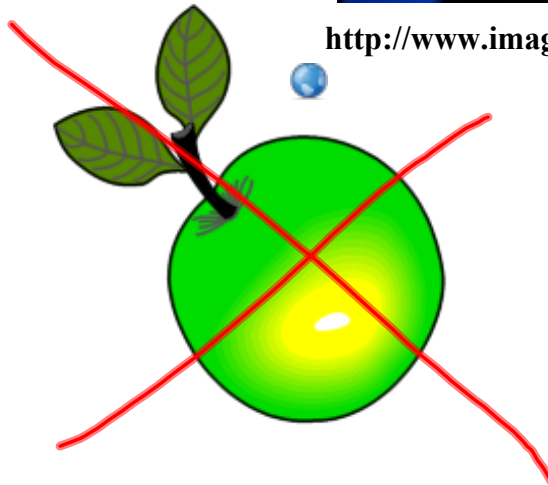
Many animals are important to each other. Give an example.

bird → human
turkey → human
rabbits → human
deer → human
crickets, frogs

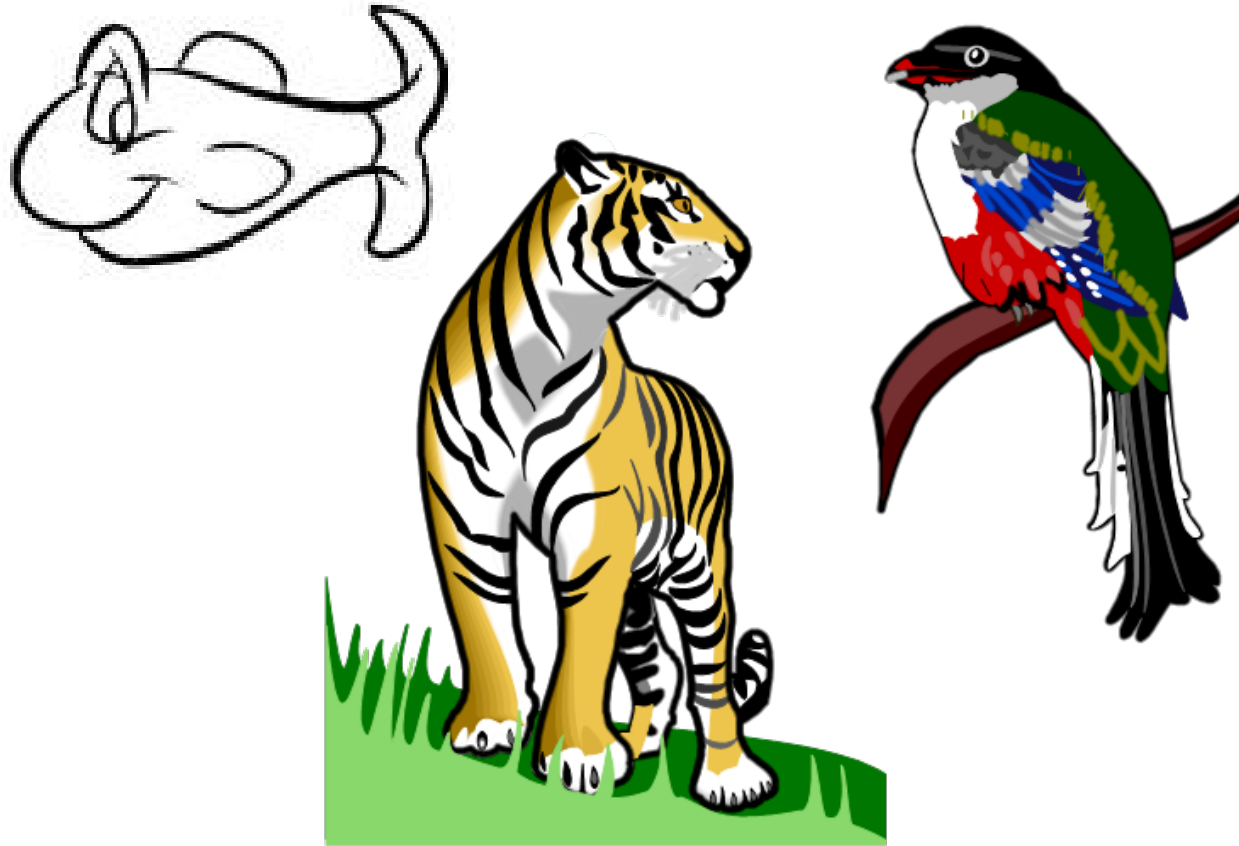
Heterotrophic -they cannot make
their own food



<http://www.imagequest3d.com/photos/zooplankton/index.htm>



Mobility -They can perform rapid, complex movements. Some can walk, swim, crawl, run, and fly.



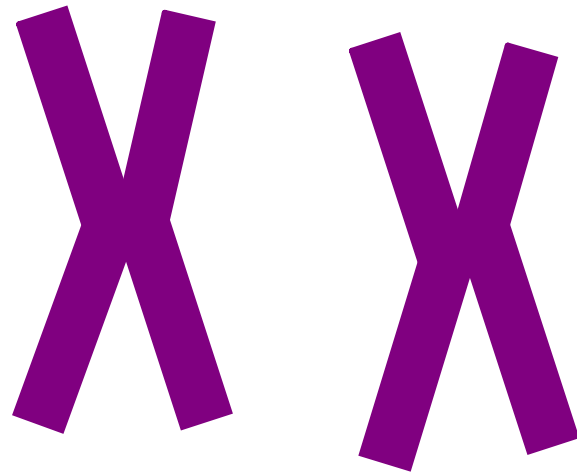
Multicellularity-all animals are multicellular, some are microscopic and some are as big as city buses. There is little difference in cell size.



<http://www.caudata.org/daphnia/>



Diploidy-animals have 2
copies of each chromosome, one
from the father and one from the
mother



Sexual Reproduction-
almost all animals

reproduce sexually

Absence of cell wall- of the
multicellular organisms only
animals lack a cell wall

Choose an animal and give evidence for each of the following.

Heterotrophic

Mobility

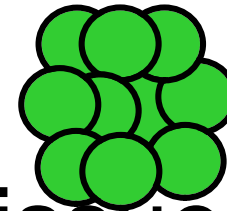
Multicellular

Diploidy

Lacking Cell Walls

Sexual Reproduction

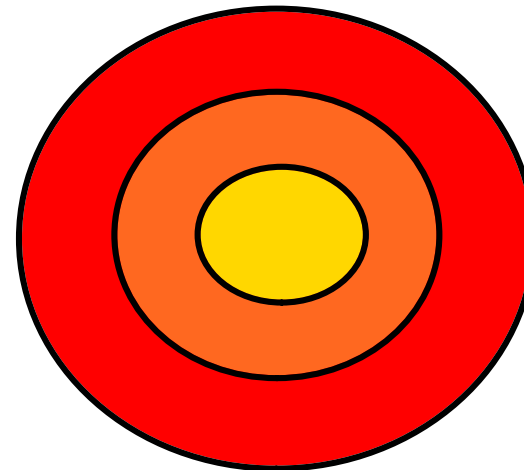
Blastula-hollow ball of cells



Ectoderm-outer layer of tissue

Mesoderm-middle layer of tissue

Endoderm-inner layer of tissue



Ecto

Skin

Eyes

Nervous
System

Meso

Muscles

Skeleton

Veins

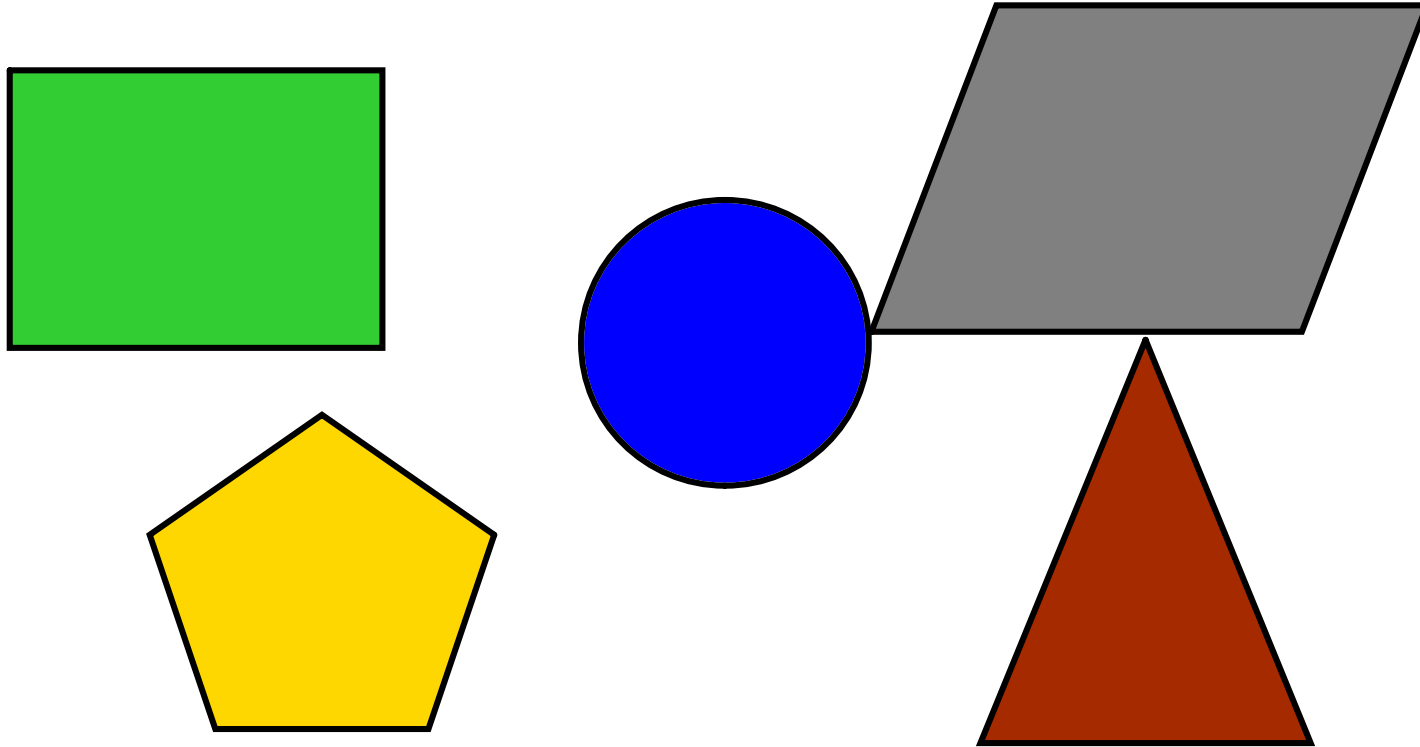
Endo

Stomach

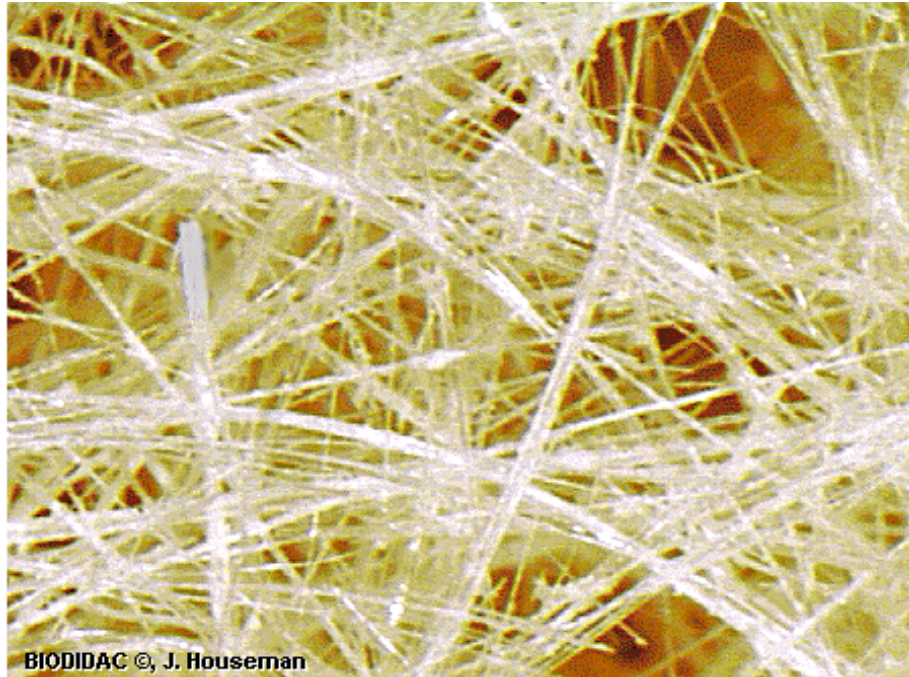
Lungs

Glands

Body Plan- a term used to describe an animals shape.



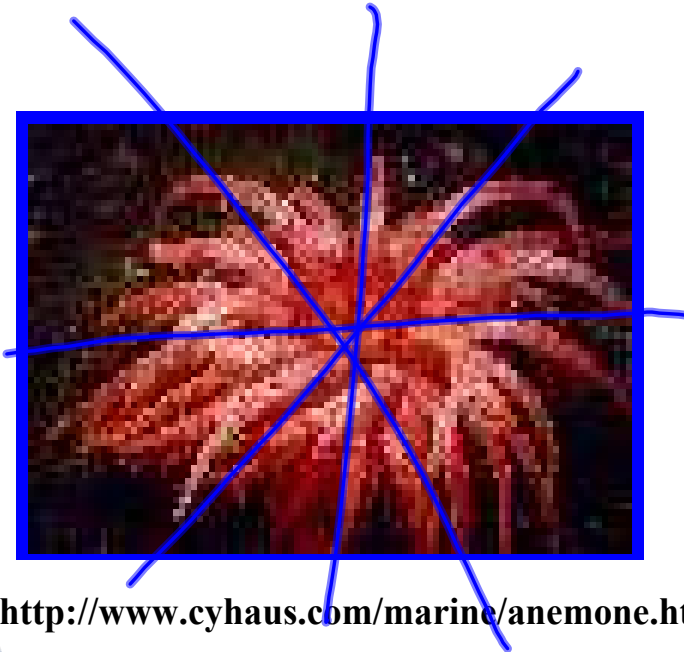
Asymmetrical- irregular in shape



<http://cas.bellarmine.edu/tietjen/images/HEXA004P.GIF>



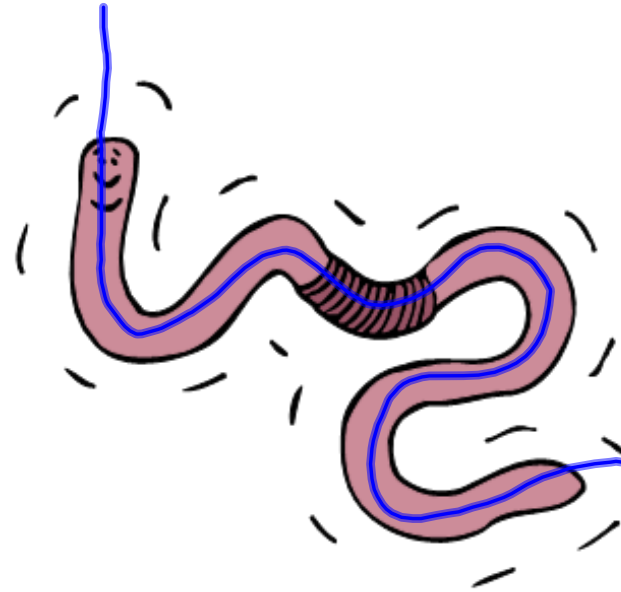
Radial symmetry- body parts all arranged around a central axis

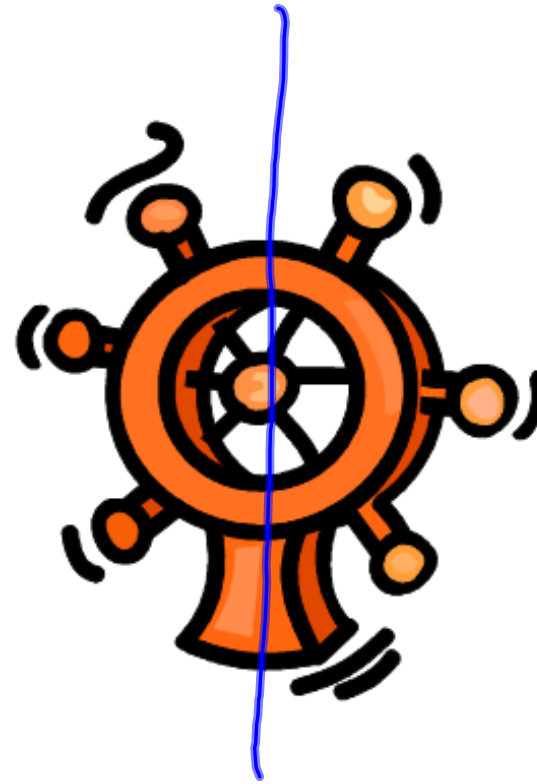
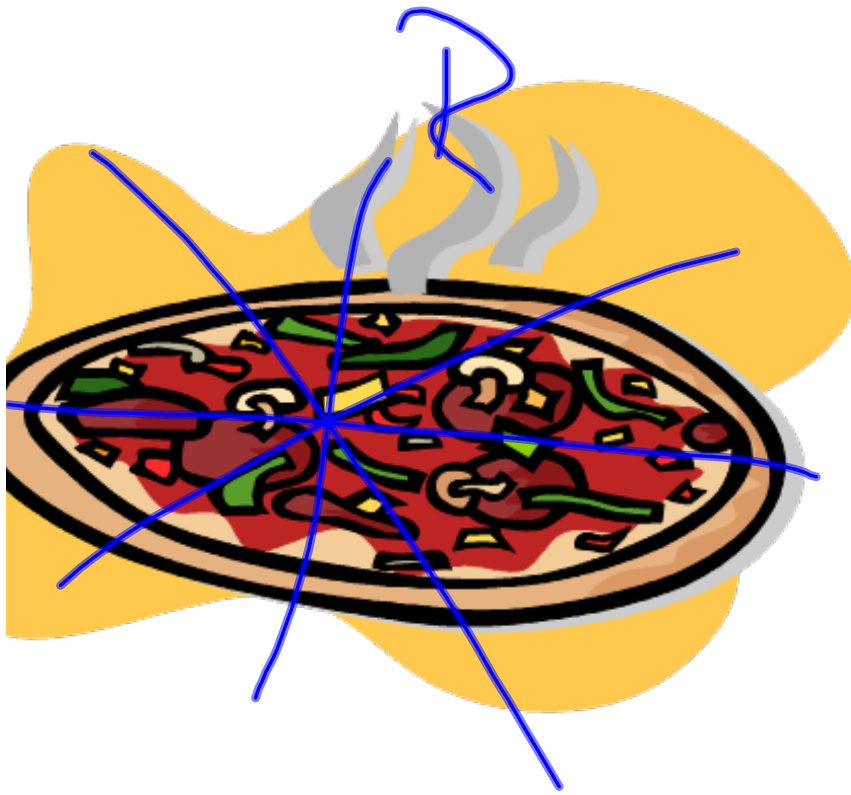


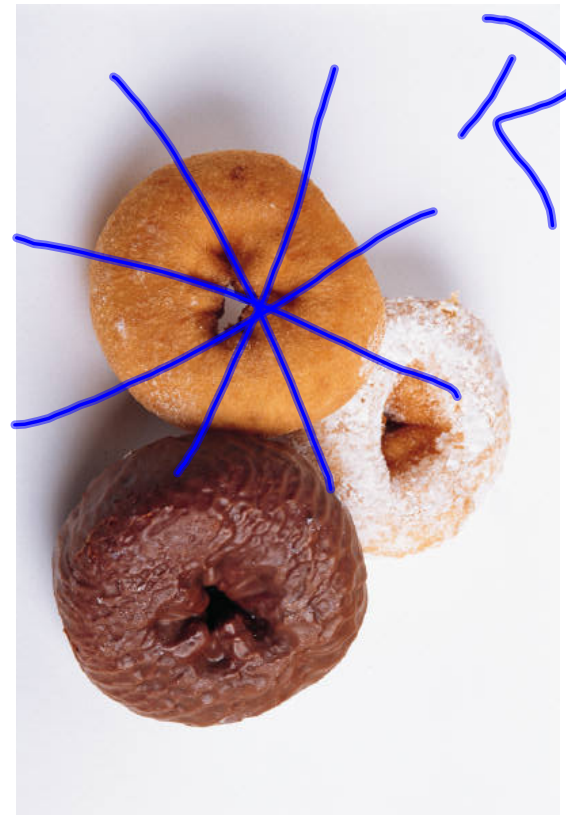
<http://www.cyhaus.com/marine/anemone.htm>



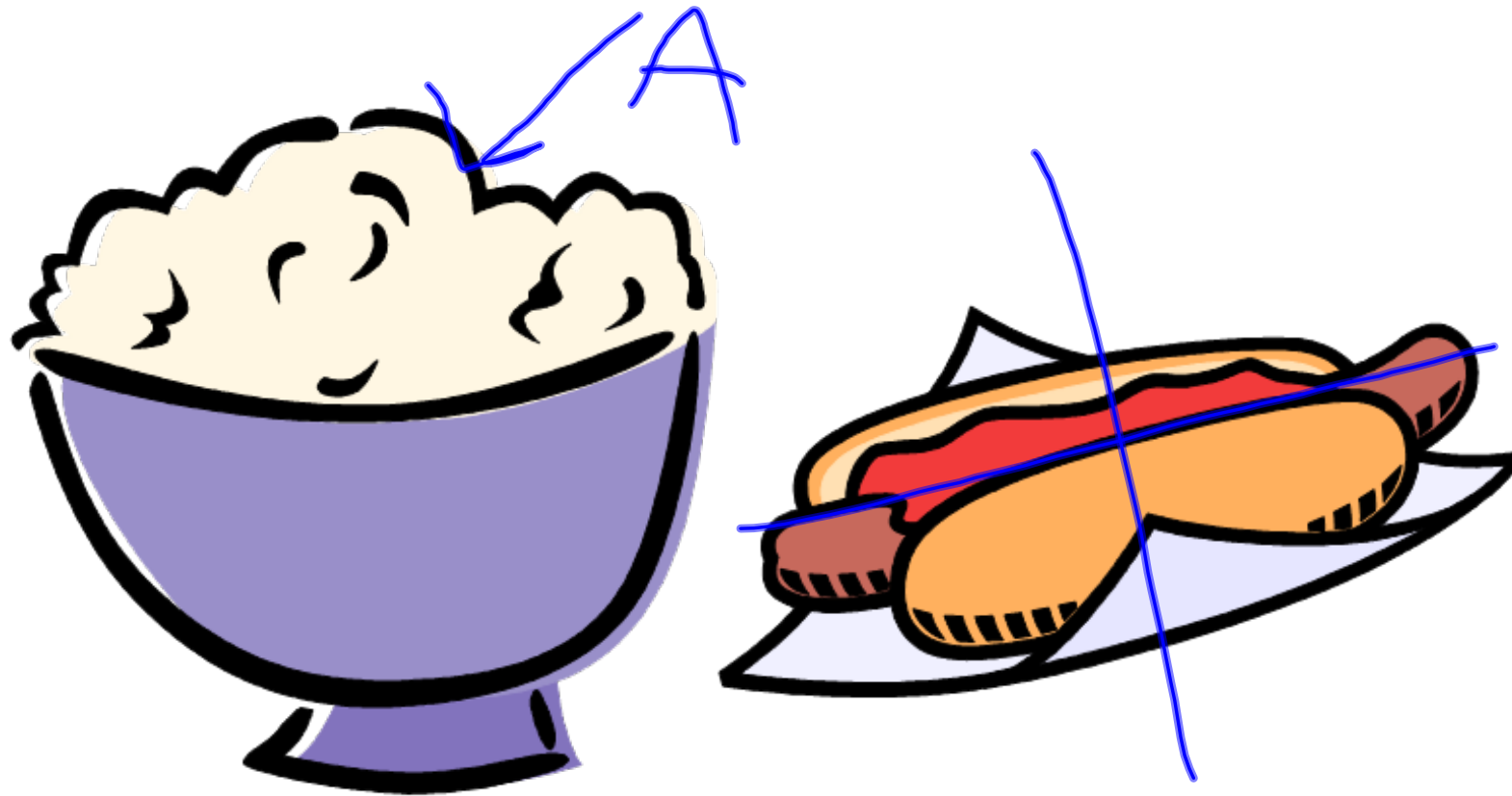
Bilateral Symmetry- distinct
left and right halves

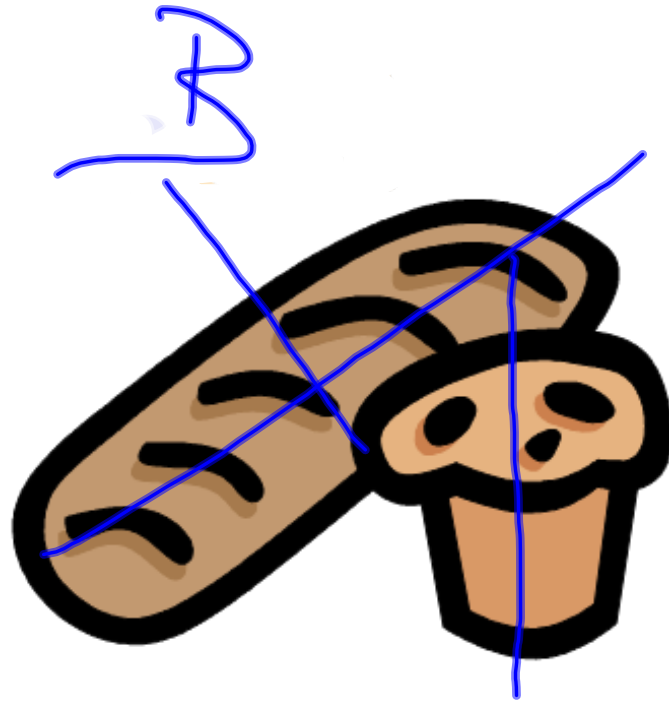




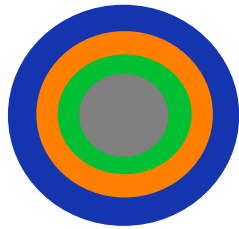


Mar 2 - 5:29 PM

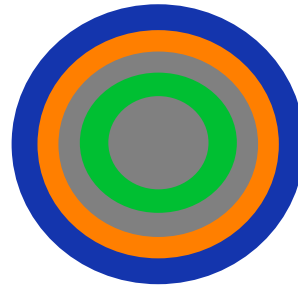




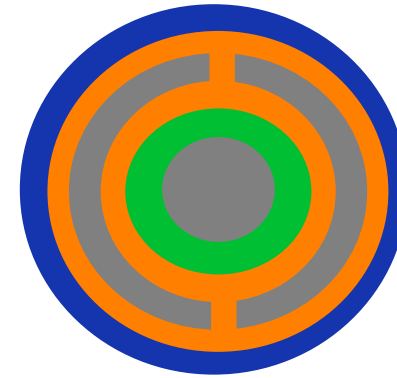
Bilaterally symmetrical animals have one of three basic body plans. Body Cavity Types



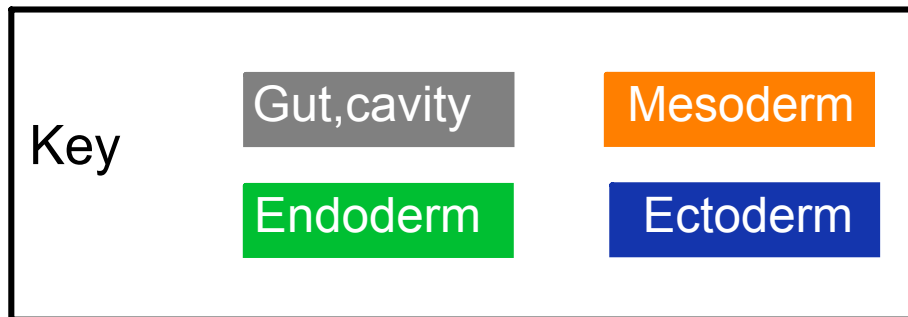
Acelomates



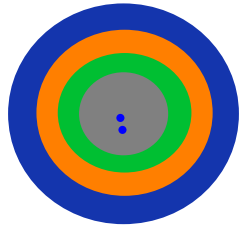
Pseudocoelomates



Coelomates

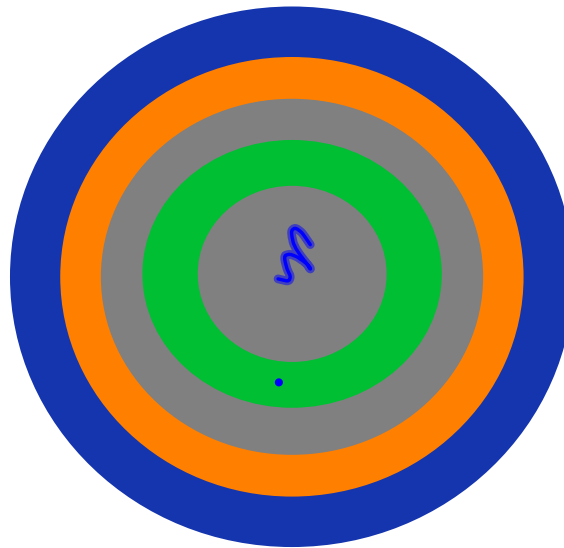


Acelomates- animals with no body cavity

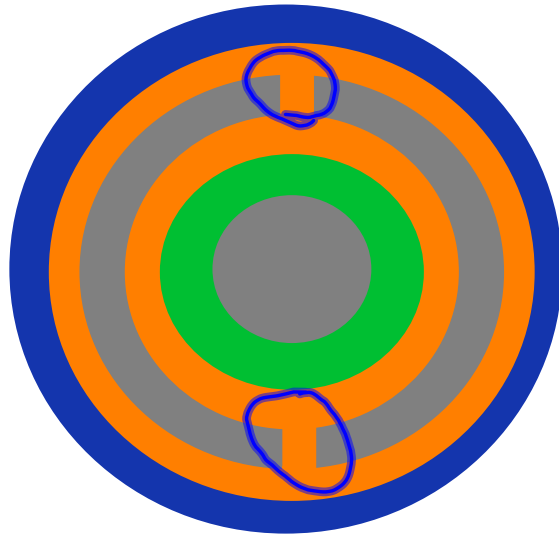


The space between the gut and the wall is completely filled with tissue.

Pseudocoelomates- have a body cavity located between the mesoderm and the endoderm.



Coelomates- a body cavity located entirely within the mesoderm.



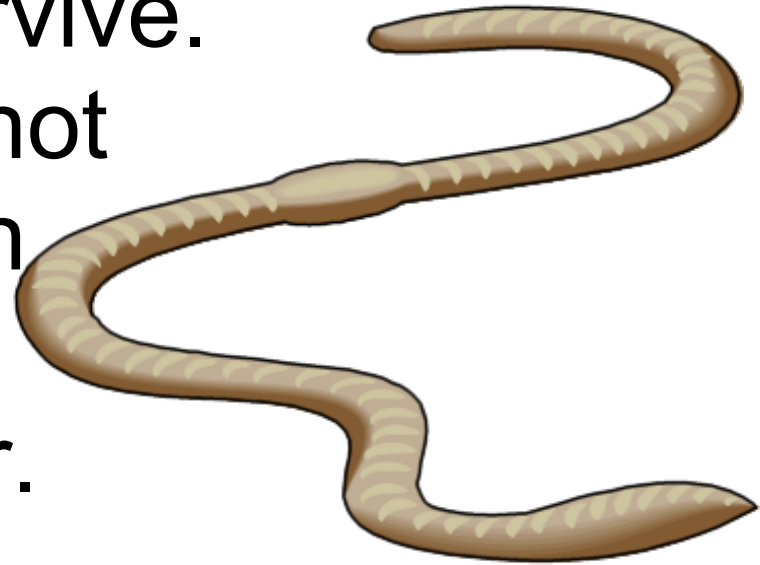
The gut and other organs are suspended in the coelom.

Advanced organism show
segmentation.

Where is the segmentation in humans?

In an earthworm each segment repeats many of the organs so injured animals can still survive. The segments are not independant though materials still pass from one to another.

How?



Phylum	Evolutionary Milstone
Chordata	Notocord
Echinodermata	Deuterostomes
Arthropoda	Jointed Appendages
Annelida	Segmentation
Mollusca	Coelom
Nematoda	Pseudocoelom
Platyhelminthes	Bilateral Symmetry
Cnidaria	Tissues
Porifera	Multicellularity