

HAGFISH

By Rhyan Lee

Hagfish

- ▣ The Hagfish has a slime producing, eel shaped body.
- ▣ They are a _____ fish and has a skull but no vertebrae.
- ▣ They belong in the class called _____.

The picture of a Hagfish



<http://en.wikipedia.org/wiki/Hagfish>

The body feature

- ▣ The Hagfish is about 19.7in. in length.
- ▣ They have a eel shaped body.
- ▣ They also have a _____ like tails.

The Slime

- ▣ It is a milky and fibrous slime or mucus.
- ▣ The Hagfish uses the slime to get away from predators.
- ▣ They also use it to capture their prey.

Respiration

- ▣ They respire and take water through the _____ and then goes into this chamber called _____ and then brings the water into 6 internal pouches that's on the side of the Hagfish.

Reproduction

- ▣ They reproduce asexually and sexually.
- ▣ The females lay 1 or 2, to _____, yolky eggs.

The body plan of the Hagfish

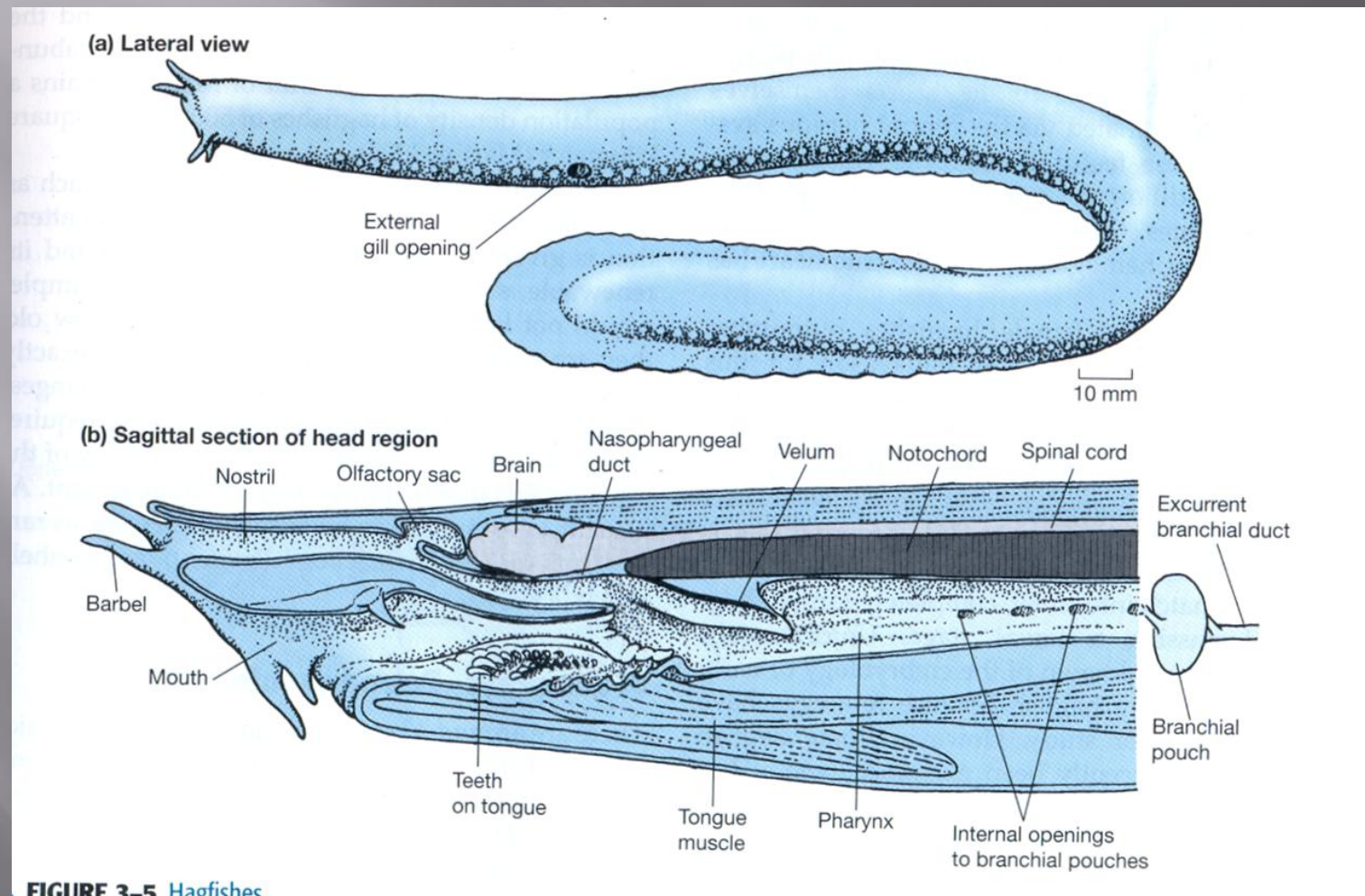


FIGURE 3-5 Hagfishes.

The feeding of the Hagfish

- ▣ They go inside the dead or injured sea creatures that are much larger than they are.
- ▣ They are known to eat their prey from the inside.

Links

- ▣ <http://en.wikipedia.org/wiki/Hagfish>
- ▣ www.studyblue.com