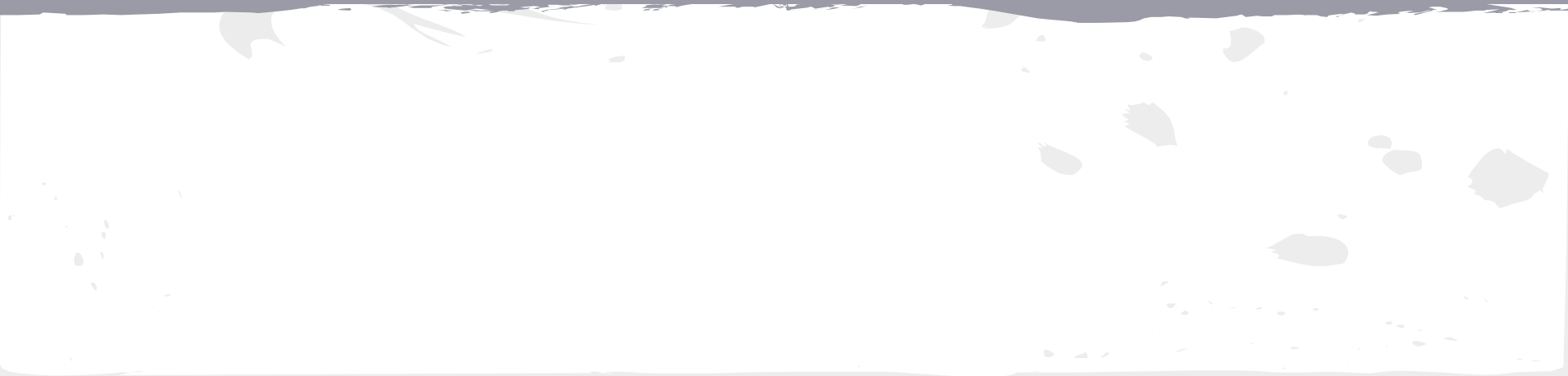


# TOADS



# CLaSSIFICATION

Kingdom: \_\_\_\_\_

Phylum: \_\_\_\_\_

Class: \_\_\_\_\_

Order: \_\_\_\_\_

Family: \_\_\_\_\_

Genus: \_\_\_\_\_

# APPearence

- Bumpy
- normally brown
- camoflauge
- sideways eyes



<http://people.wcsu.edu/pinout/herpetology/bamericanus/main.html>

# reproduction

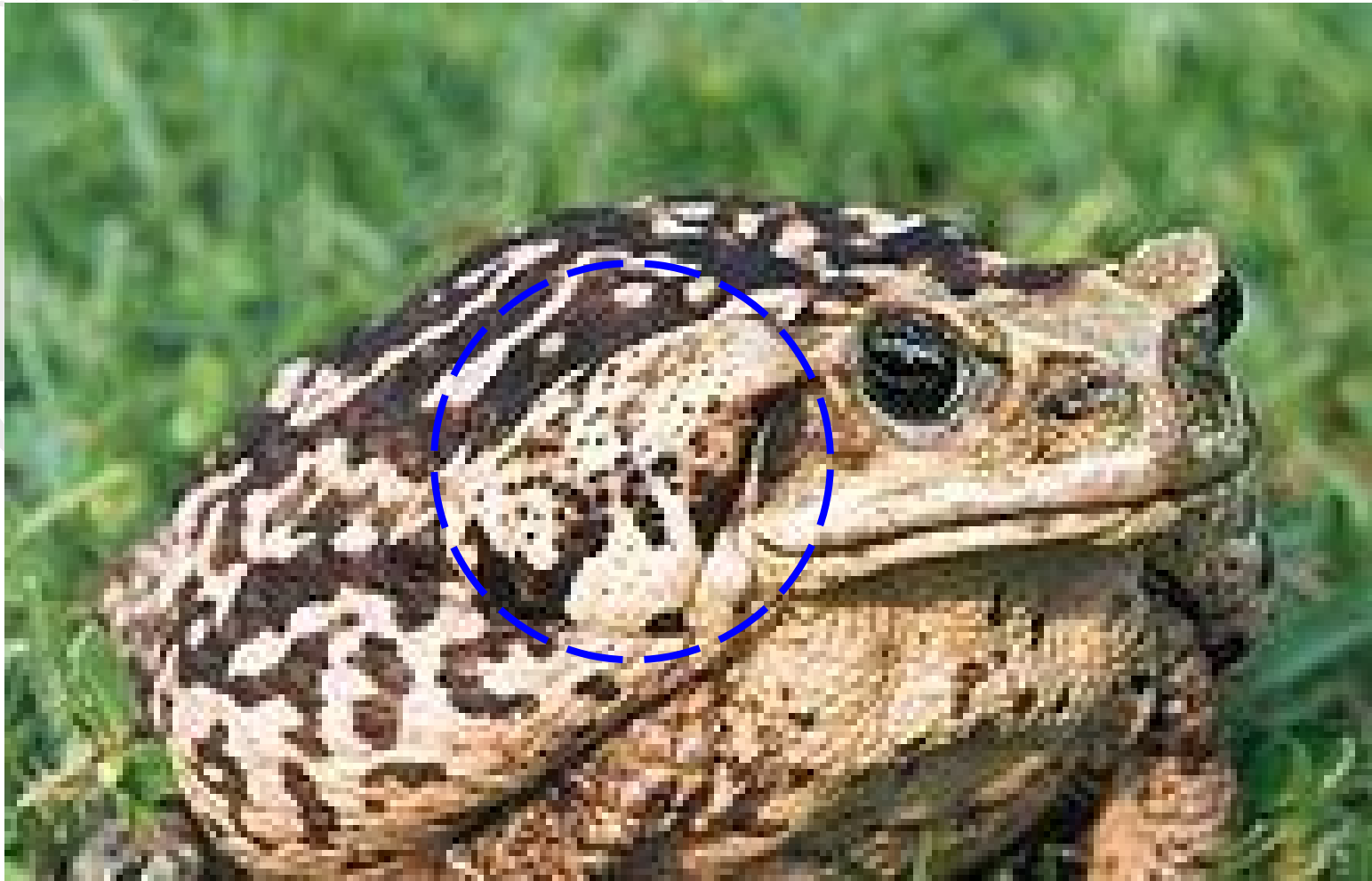
- sexual reproduction
- determining on species lay from \_\_\_\_\_ to \_\_\_\_\_ eggs

# EATING

- carnivorous
- eats mass amounts
- from \_\_\_\_\_ to \_\_\_\_\_
- “drink” through skin
- \_\_\_\_\_ tongues

# Defence

- \_\_\_\_\_ glands
- can cause paralysis or death
- only happens when in \_\_\_\_\_



[http://en.wikipedia.org/wiki/Cane\\_toad](http://en.wikipedia.org/wiki/Cane_toad)



# Fun Facts

- Chinese use dried toads for medicines
- found everywhere
- no teeth
- their eyes sink into their head to push their food down their throat
- clean their mouth with hand after eating

# Quiz :D

1. What would the toads diet consist of? name 5.
2. What are the paratoid glands?
3. What class are toads apart of?
4. How do toads eat?
5. Describe the features of the toad.