

# Poison Dart Frogs



<http://www.aqua.org/~media/Images/Animals/blue-poison-dart-frog/animals-blue-poison-frog-slide1.jpg>

Gabby Campbell  
Biology 2  
4-5th

# Where are they found?

- Native Central South America
  - tropical forests
  - \_\_\_\_\_ and Brazil
- 80 Fahrenheit in \_\_\_\_\_
  - 27 Celsius
  - daytime



[http://upload.wikimedia.org/wikipedia/commons/thumb/e/e6/Dendrobatidae\\_range.PNG/220px-Dendrobatidae\\_range.PNG](http://upload.wikimedia.org/wikipedia/commons/thumb/e/e6/Dendrobatidae_range.PNG/220px-Dendrobatidae_range.PNG)

# Dendrobatidae

- Group or \_\_\_\_\_ of poison frogs
  - "Army"
  - \_\_\_\_\_ phylum
  - Endangered(75-100 species)
  - habitat destruction
- Ex: Farming

# Coloration

- Yellow, orange, red, green, blue
  - Defense mechanism
- Skin contains \_\_\_\_\_.
- Poison can kill \_\_\_\_\_ mice
- toxic also used for \_\_\_\_\_.



<http://www.tnaqua.org/Libraries/Amphibians/YellowBandPoisonDartFrog.sflb.ashx>



[http://archies.info/wp-content/uploads/2010/05/green\\_poison\\_dart\\_frog1.jpg](http://archies.info/wp-content/uploads/2010/05/green_poison_dart_frog1.jpg)



<http://newswatch.nationalgeographic.com/files/2013/11/poison-dart-frog-pumilio-defenses-s2048x1372-p.jpg>

# Aposematic Coloration

- Warning signs of color
- Toxins called “\_\_\_\_\_”
  - \_\_\_\_\_ poison
- In captivity:
  - \_\_\_\_\_
  - lives 10 years
  - 3 species toxic

# Diet

- Acquires poison from \_\_\_\_\_.

-not born with it

- Insects

Ex: Fruit flies, crickets, small beetles

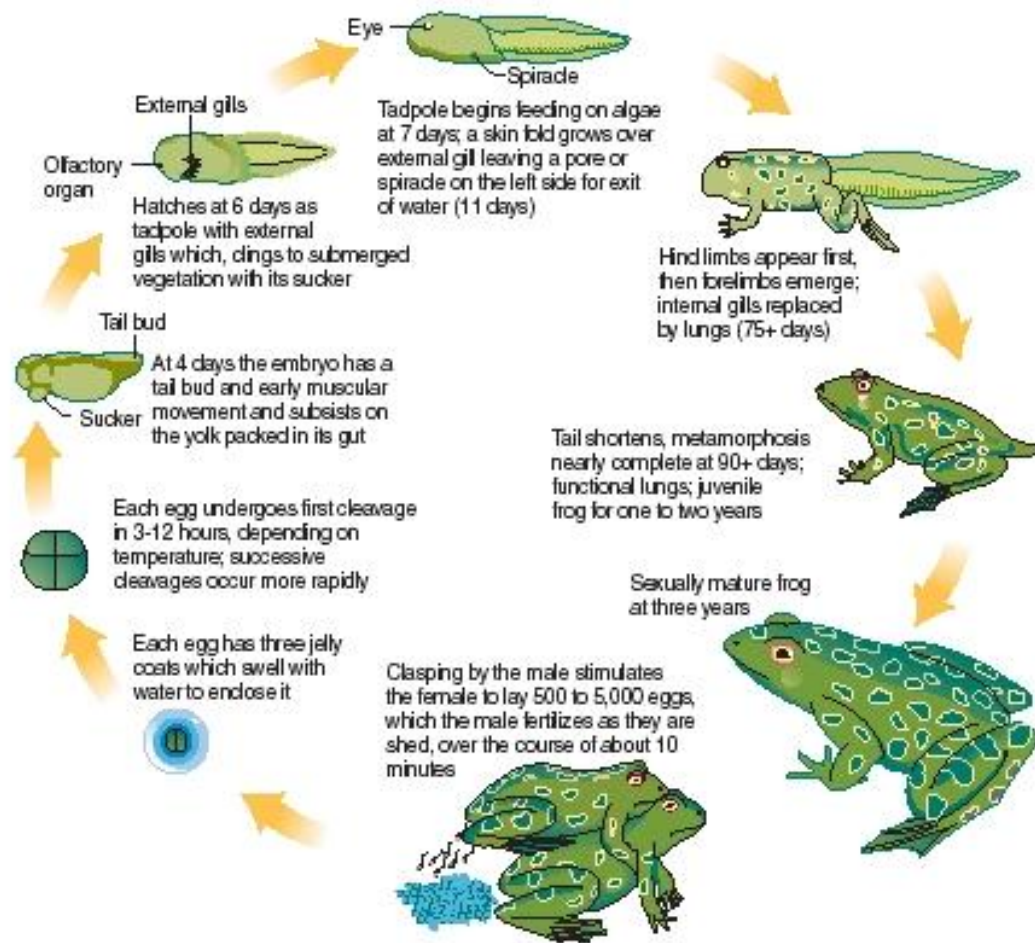
- Predators are:

- mostly \_\_\_\_\_

# Mating

- Only in \_\_\_\_\_ climates
  - Mid \_\_\_\_\_ - \_\_\_\_\_
- Male does a ritual to attract female
  - complex





# Process of reproduction

- Male first gets territory
- Hops onto \_\_\_\_\_
- Uses \_\_\_\_\_
  - loud mating calls to the female

- Once females attracted, she lays eggs
  - \_\_\_ eggs
  - lukewarm pools
- Male then comes and \_\_\_\_\_ eggs



<http://www.frogforum.net/members/john-albums-ranitomeya-imitator-tarapoto-ue-picture7718-tarapoto-imitating-dart-frog-ranitomeya-imitator-formerly-dendrobates-imitator-guarding-clutch-its-eggs-bromeliad.jpg>

# What happens once they hatch?

- Takes \_\_\_\_ days to hatch
- Jump on males back
  - carries to stream, lake
- Develop
  - 6-12 weeks to \_\_\_\_\_.

# Fun Facts!

- Give unfertilized eggs to \_\_\_\_\_ to eat
- \_\_\_\_ cm in size  
-paperclip