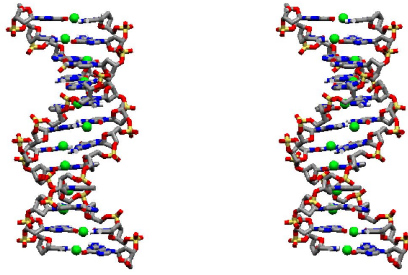


## Chapter 6-1 Notes



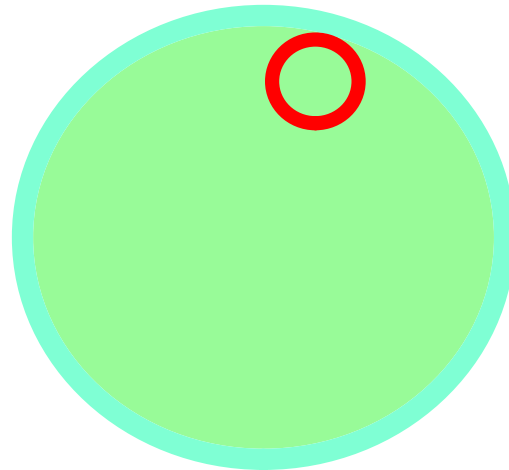
<http://dike.stark.ca/~psa151/mdna.jpg>

What would happen if part of this was deleted or not copied when a new cell was made.

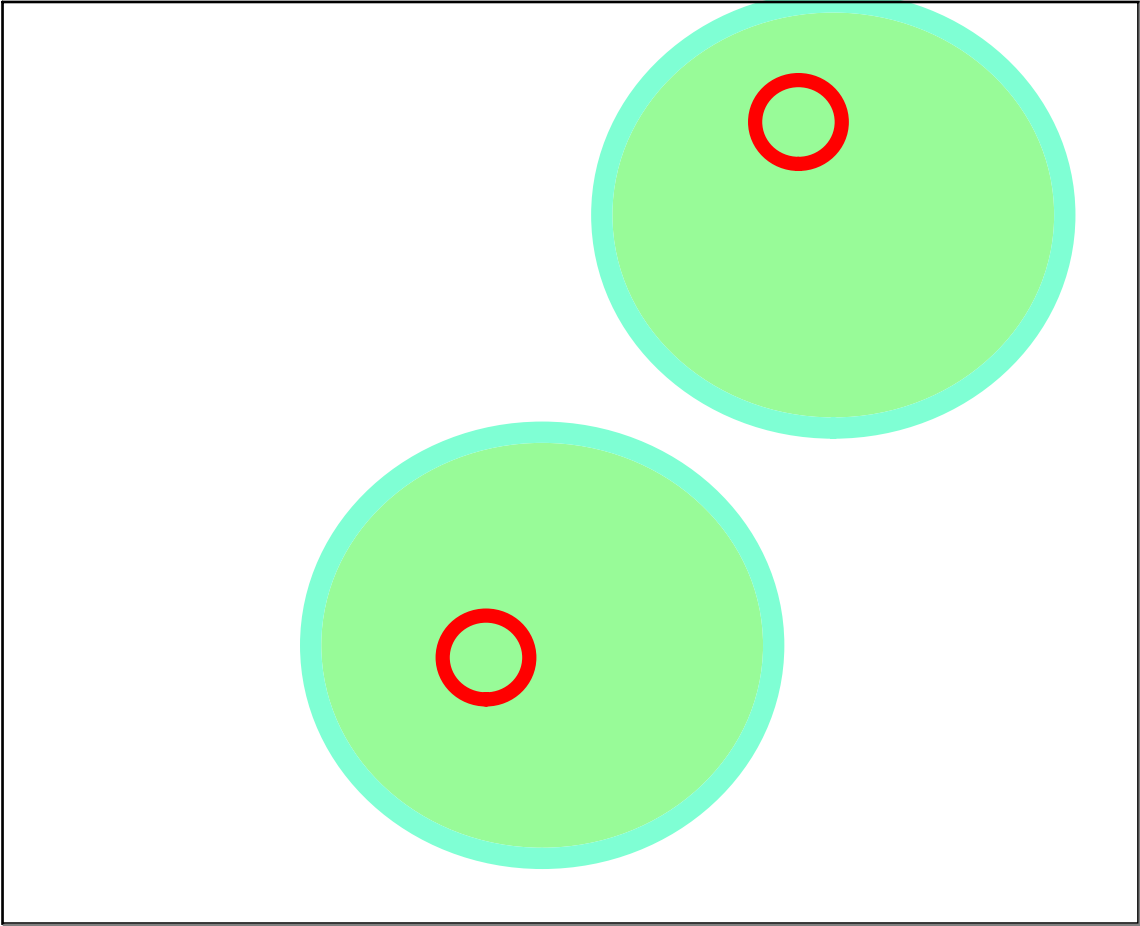
Nov 7 - 4:18 PM

## Bacterial Cells

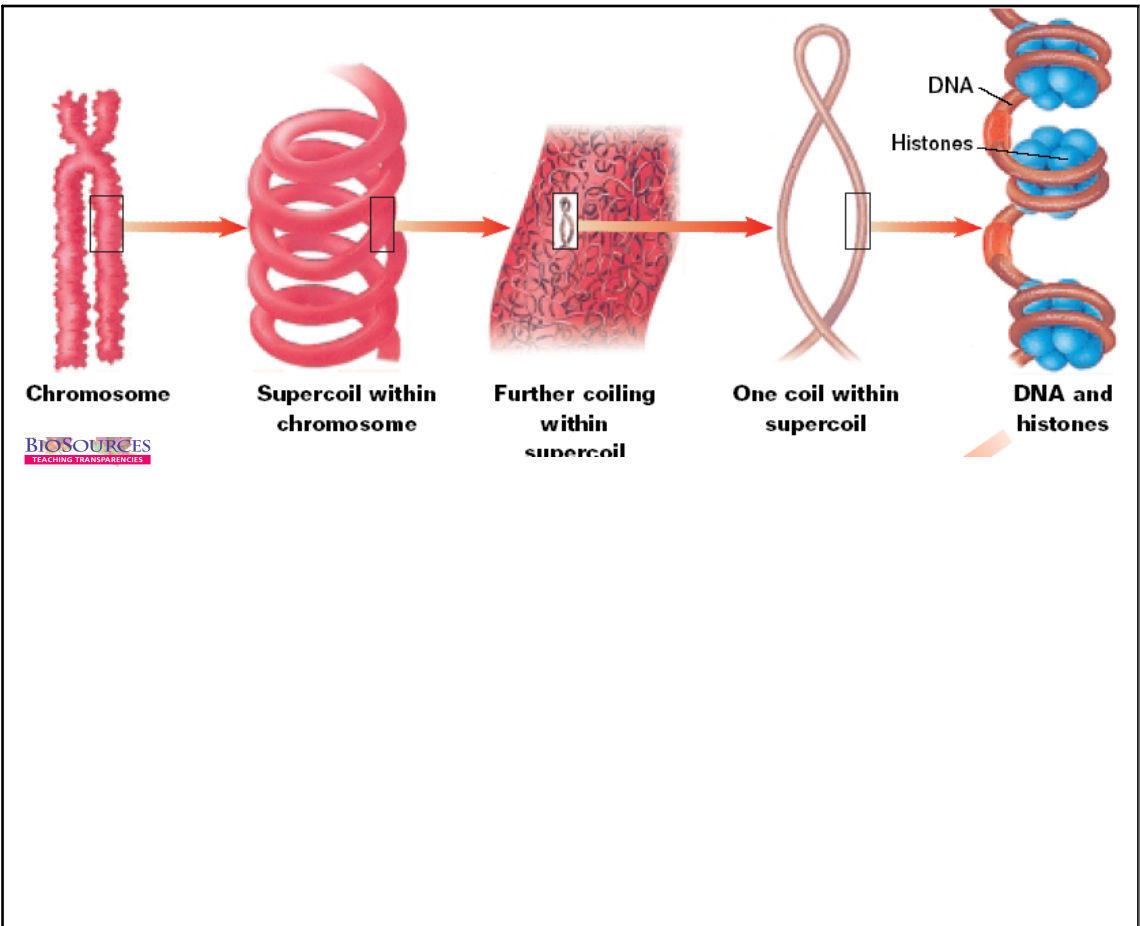
Binary fission- a form of asexual reproduction that produces identical offspring.



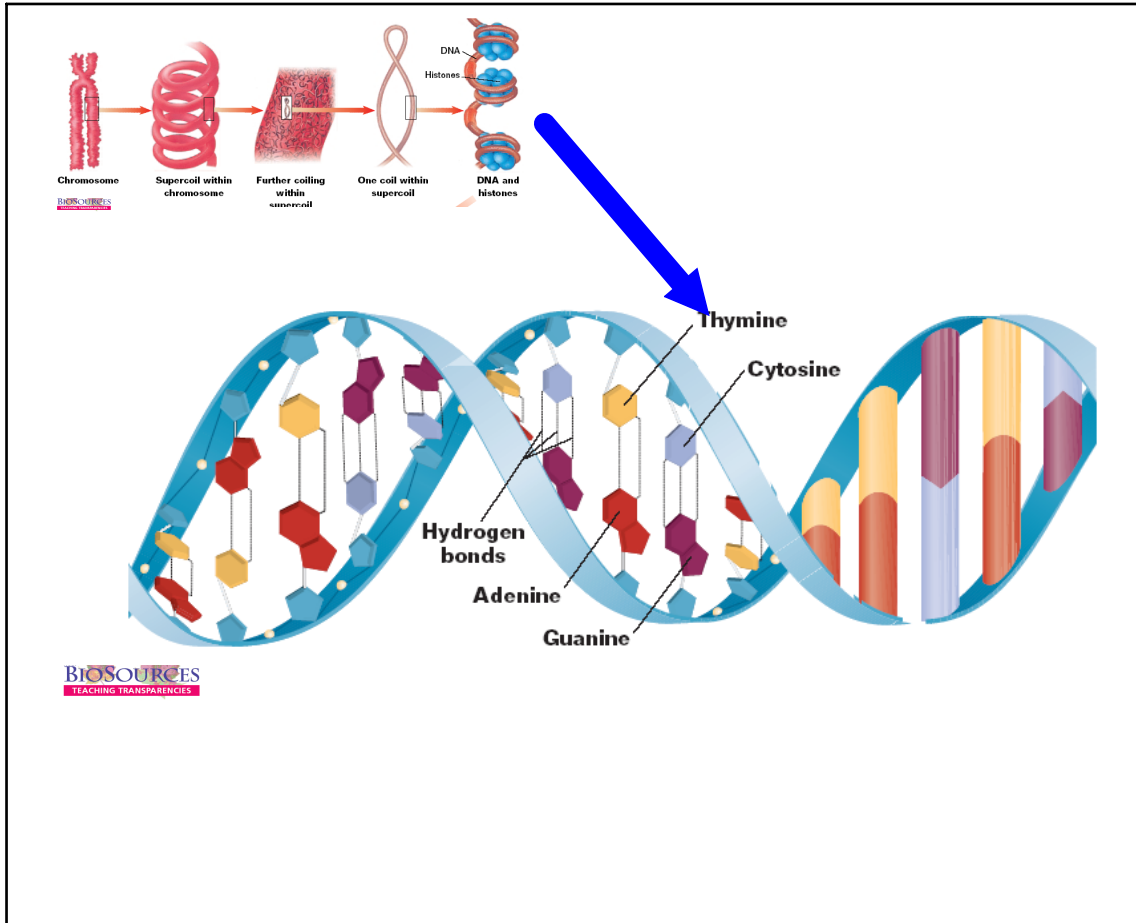
Nov 7 - 4:21 PM



Nov 7 - 4:24 PM



Nov 7 - 4:36 PM

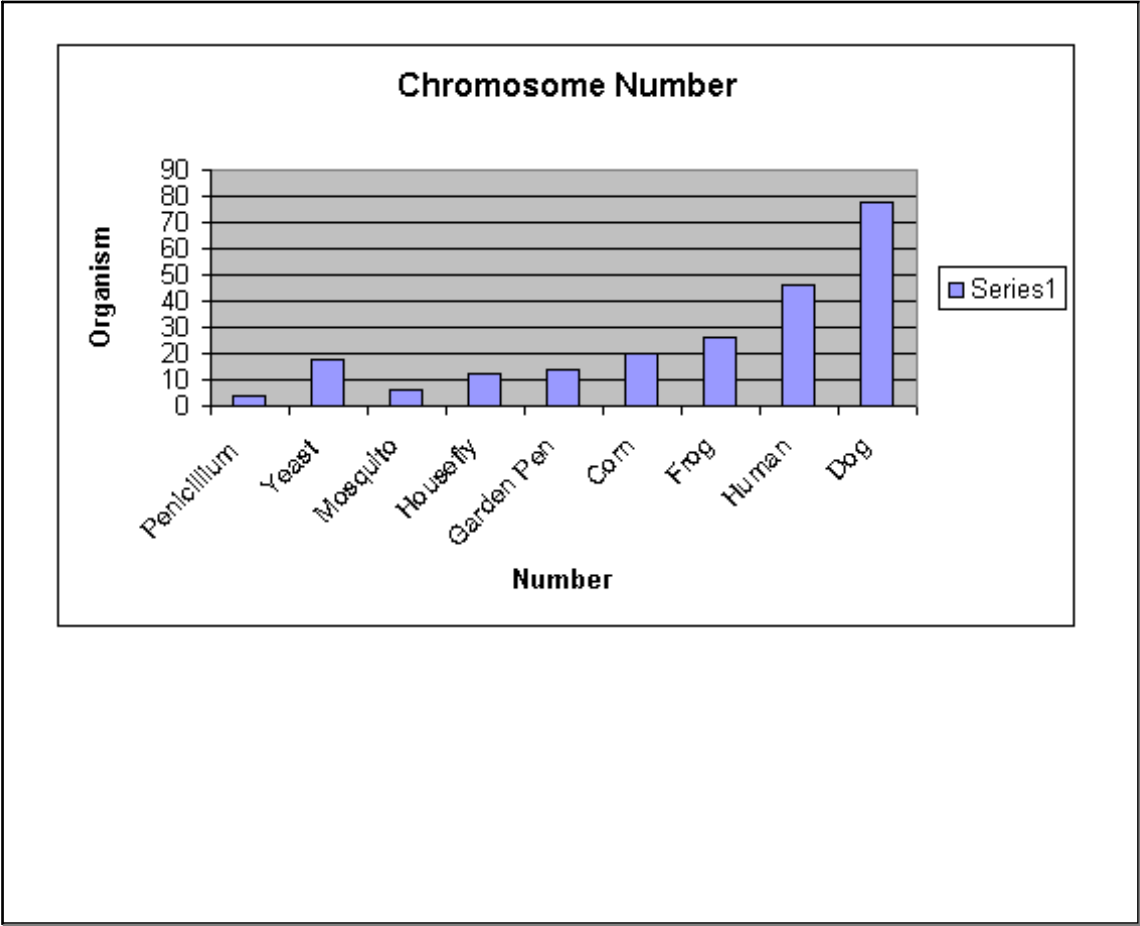


Nov 7 - 4:36 PM

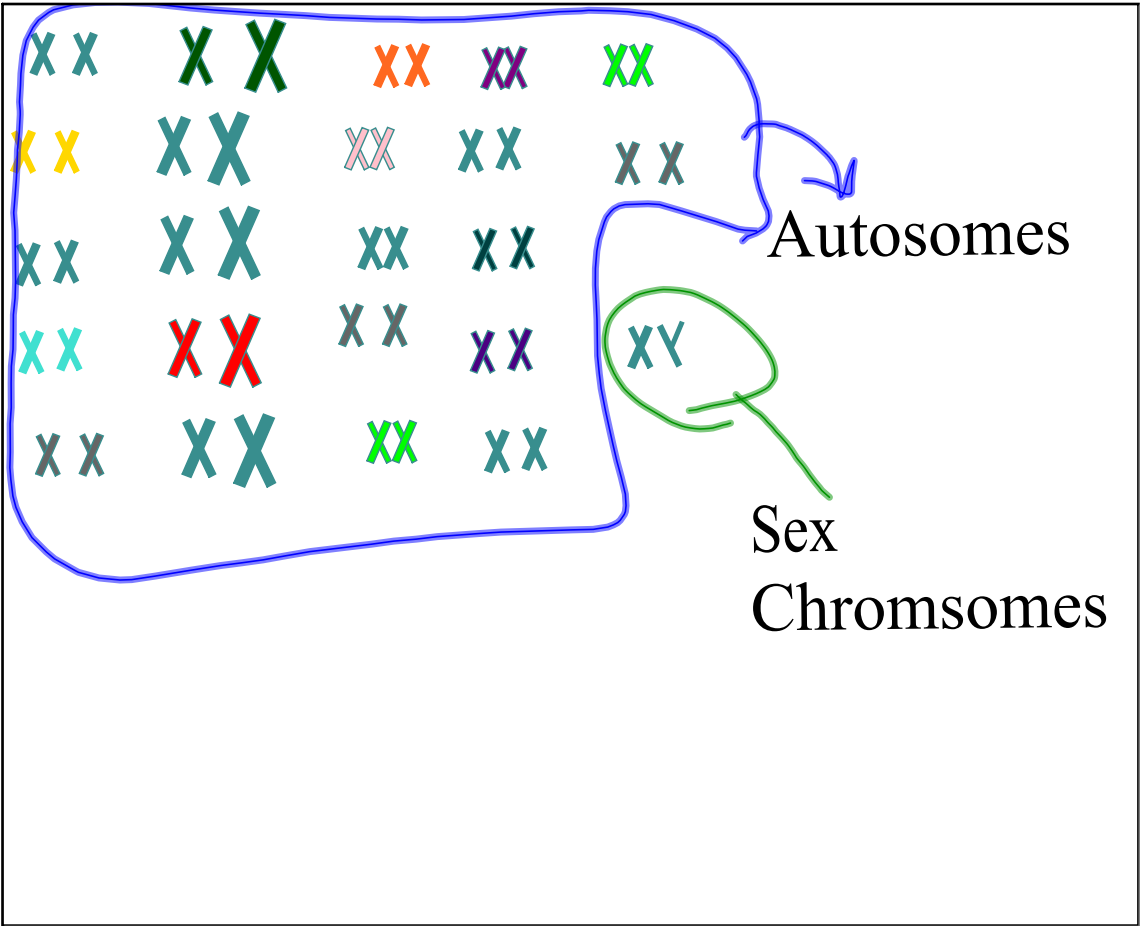
A grid of colored 'X' characters arranged in five rows and five columns. The colors of the 'X's are: Row 1: Green, Red, Orange, Purple, Green; Row 2: Yellow, Teal, Grey, Teal, Grey; Row 3: Teal, Teal, Teal, Teal; Row 4: Cyan, Red, Teal, Purple, Grey; Row 5: Grey, Teal, Green, Teal.

Zygote- a fertilized egg cell, the first cell of a new individual

Nov 7 - 4:49 PM



Nov 7 - 4:54 PM



Nov 7 - 4:55 PM

Autosomes

chromosomes  
that are ) not  
involved in  
determining the  
sex

Nov 7 - 4:56 PM

XY

-male

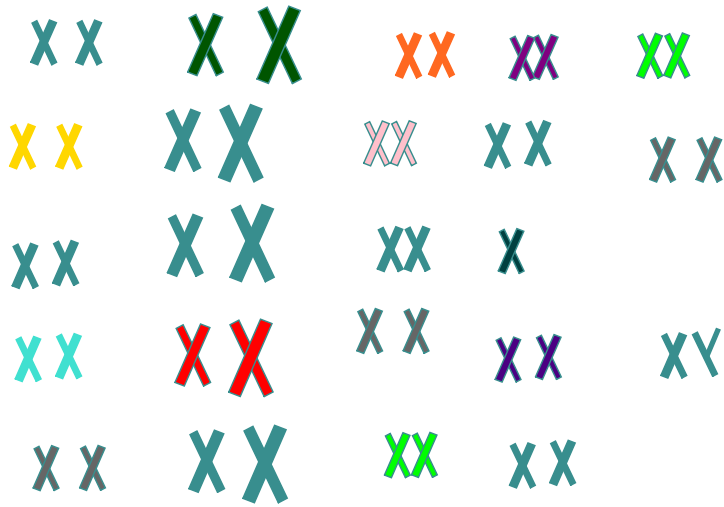
Sex  
Chromosomes

XX

-female

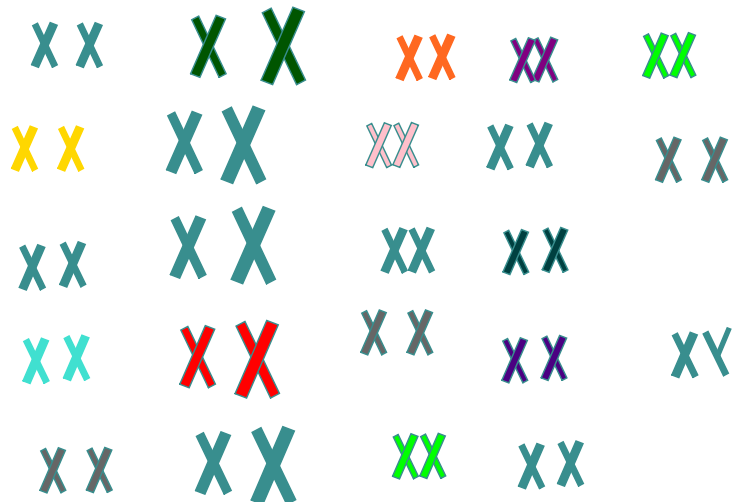
Nov 7 - 4:57 PM

## What if missing one?

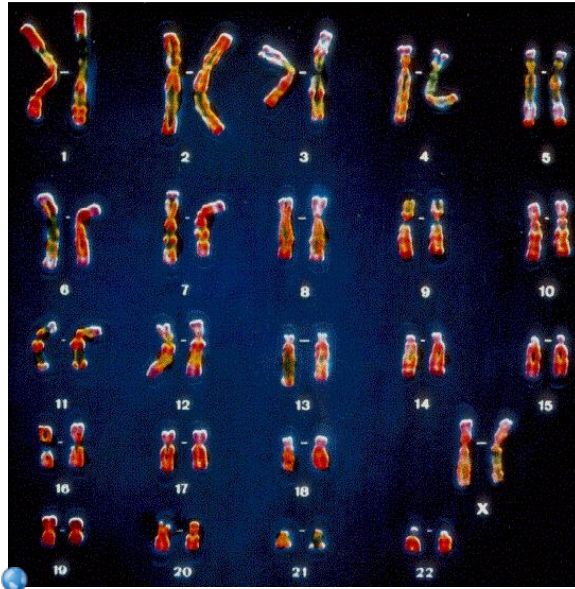


Nov 7 - 4:58 PM

## What if there is an extra one?

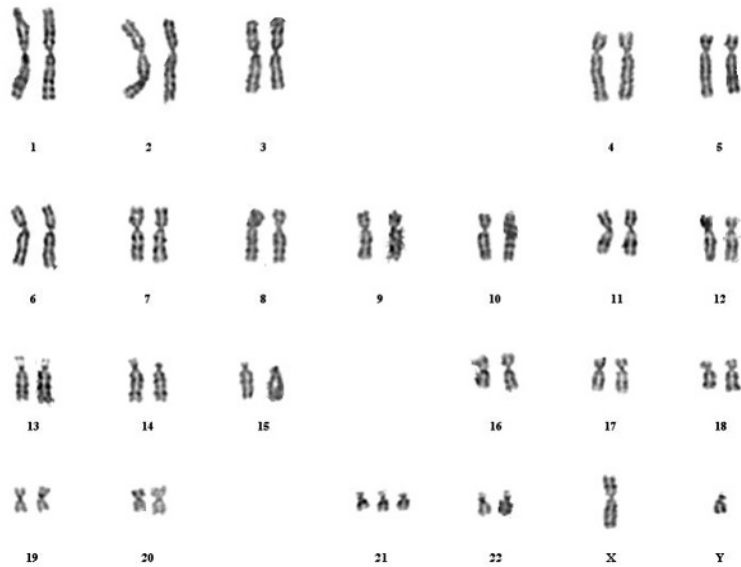


Nov 7 - 4:59 PM



<http://www.familystudies.org/karyotype.jpg>

Nov 7 - 5:01 PM



<http://www.health.gov.mt/impaedcard/issue/issue13/0311/fig4.jpg>

Nov 7 - 5:01 PM



Translocation   Deletion   Inversion   Duplication



Nov 7 - 5:10 PM



Translocation   Deletion   Inversion   Duplication



Nov 7 - 5:10 PM



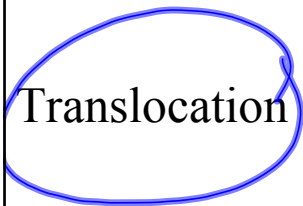
Translocation    Deletion    Inversion    Duplication



Nov 7 - 5:10 PM



Translocation    Deletion    Inversion    Duplication



Nov 7 - 5:10 PM