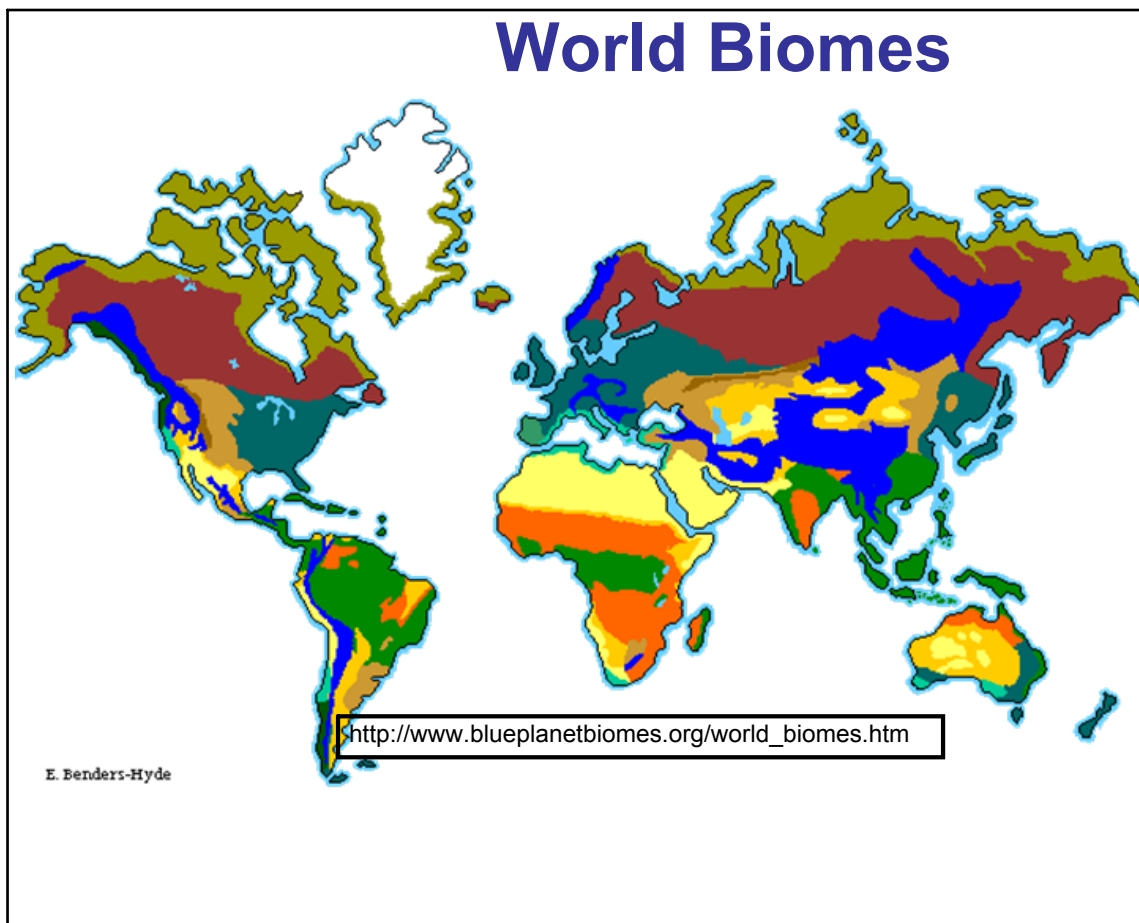


Climate- the prevailing weather conditions in any given area

Biome- a major biological community the occurs over a large area of land

Apr 30-6:19 PM

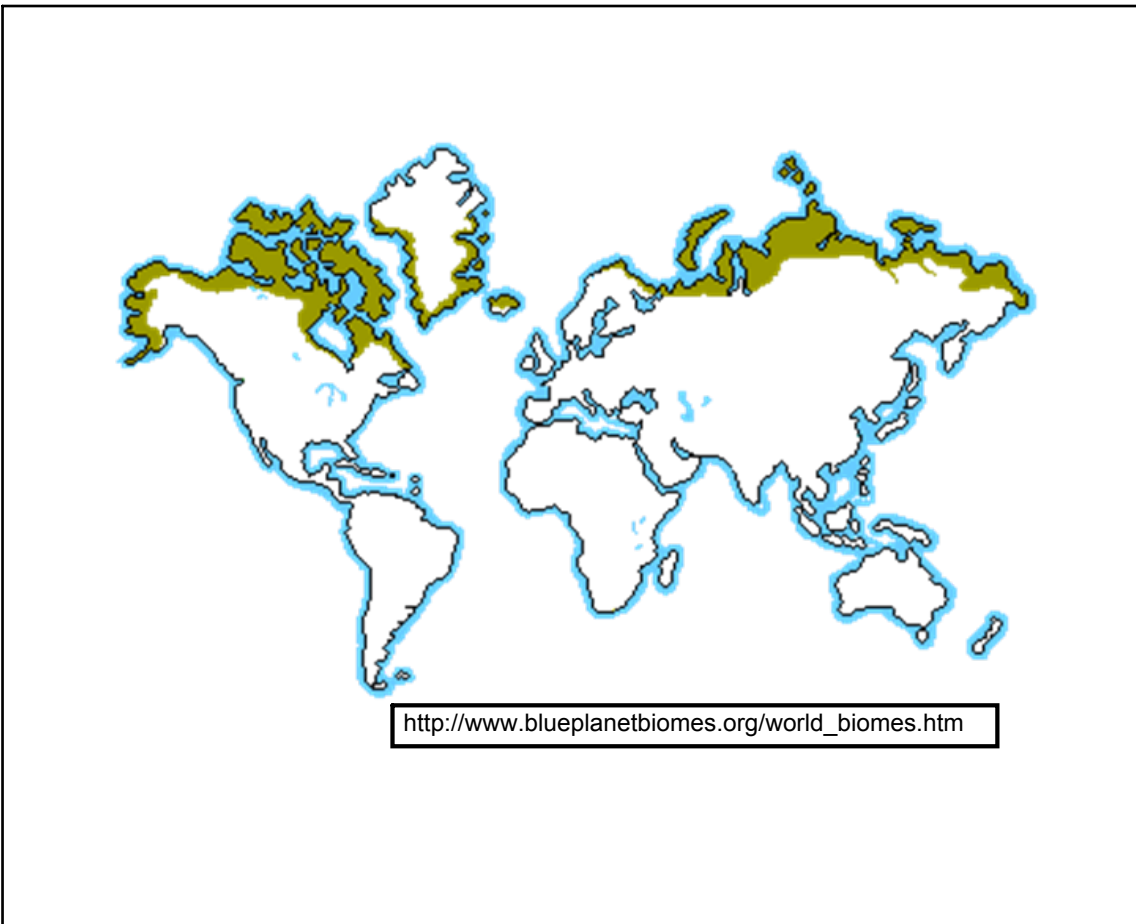


Apr 30-6:19 PM

# Tundra



Apr 30-6:25 PM



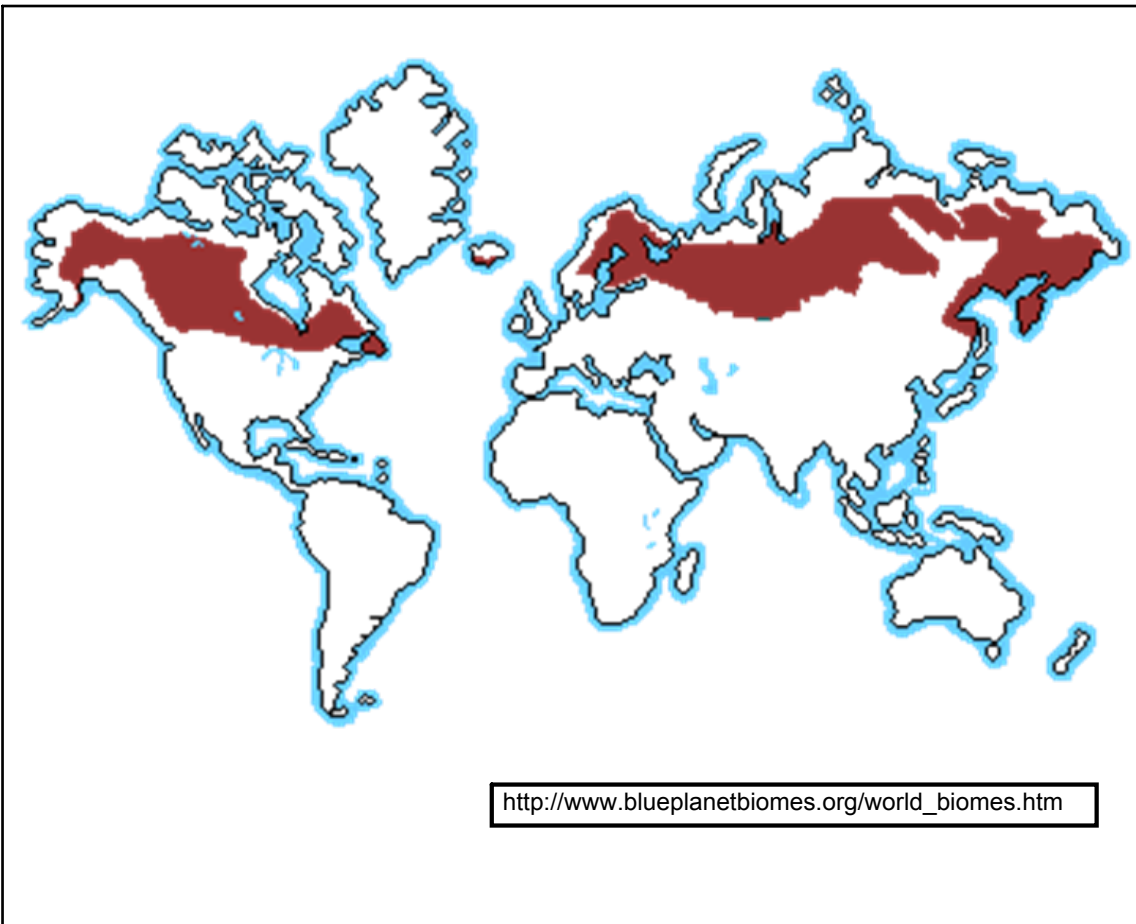
Apr 30-6:19 PM

# Taiga



[http://www.blueplanetbiomes.org/world\\_biomes.htm](http://www.blueplanetbiomes.org/world_biomes.htm)

Apr 30-6:25 PM



[http://www.blueplanetbiomes.org/world\\_biomes.htm](http://www.blueplanetbiomes.org/world_biomes.htm)

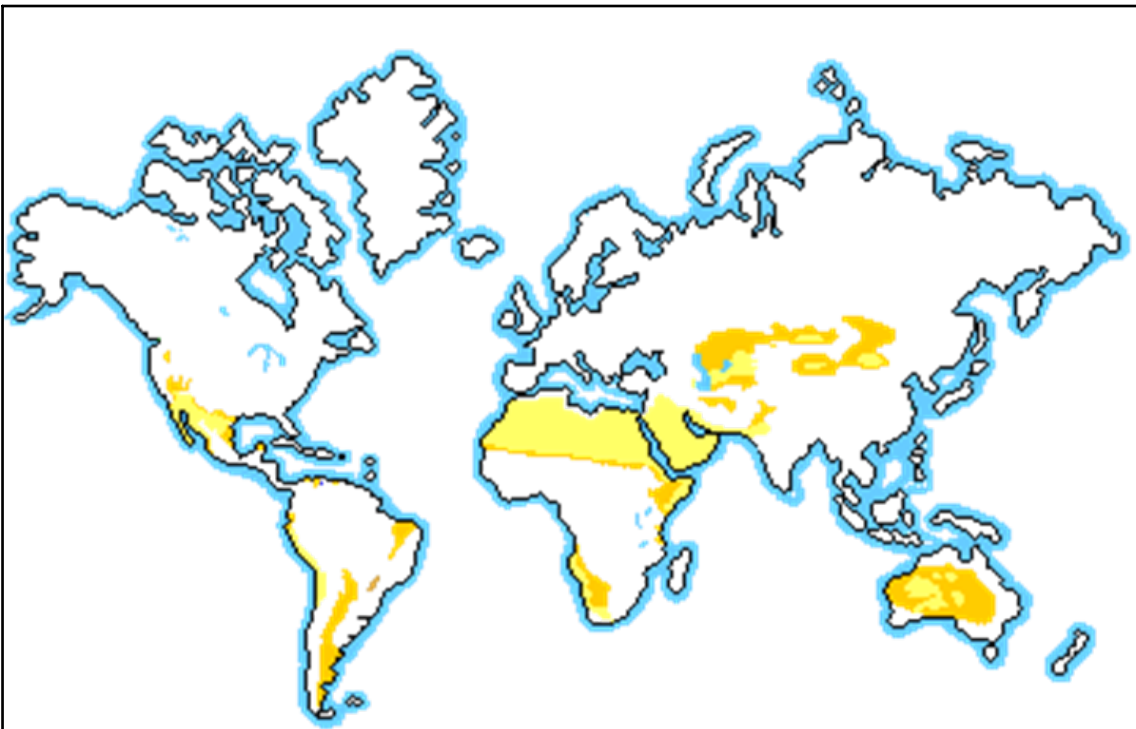
Apr 30-6:19 PM

# Desert



[http://www.blueplanetbiomes.org/world\\_biomes.htm](http://www.blueplanetbiomes.org/world_biomes.htm)

Apr 30-6:26 PM



[http://www.blueplanetbiomes.org/world\\_biomes.htm](http://www.blueplanetbiomes.org/world_biomes.htm)

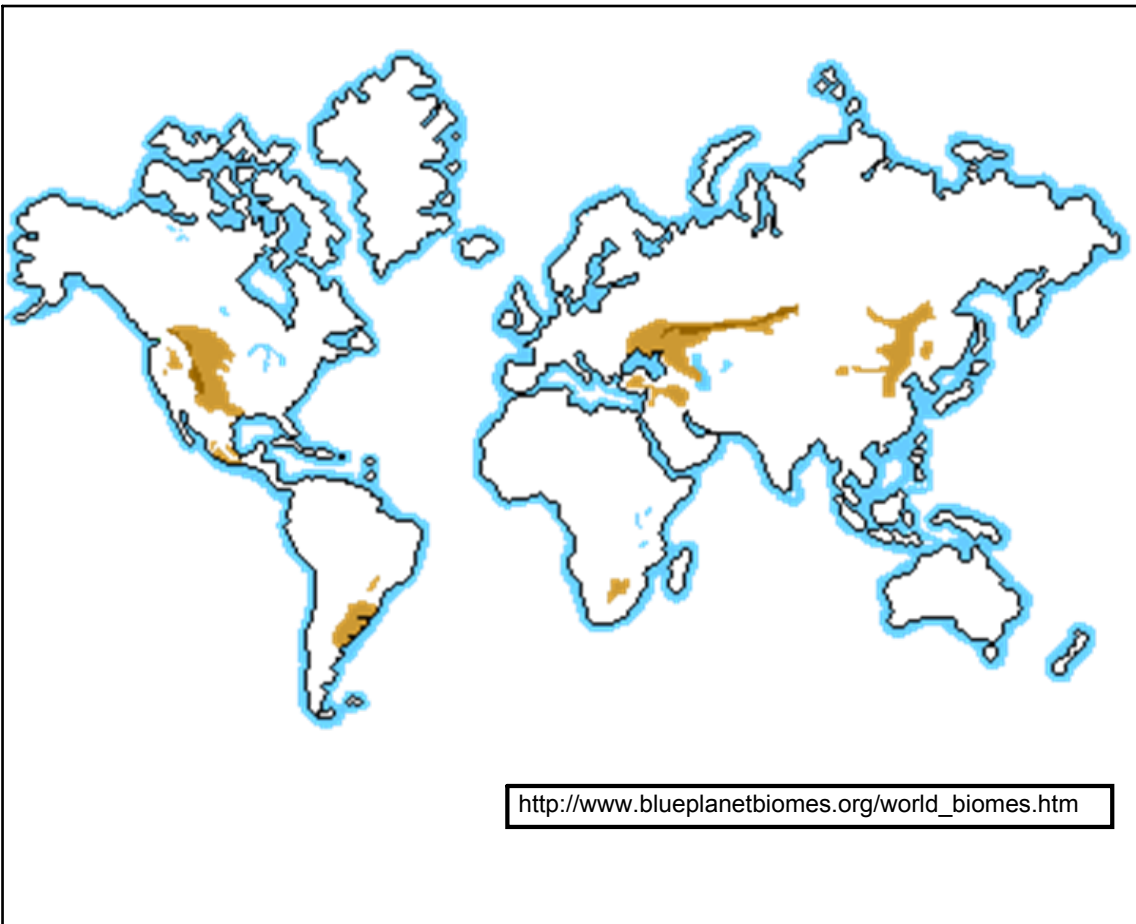
Apr 30-6:19 PM

# Grasslands



[http://www.blueplanetbiomes.org/world\\_biomes.htm](http://www.blueplanetbiomes.org/world_biomes.htm)

Apr 30-6:27 PM



[http://www.blueplanetbiomes.org/world\\_biomes.htm](http://www.blueplanetbiomes.org/world_biomes.htm)

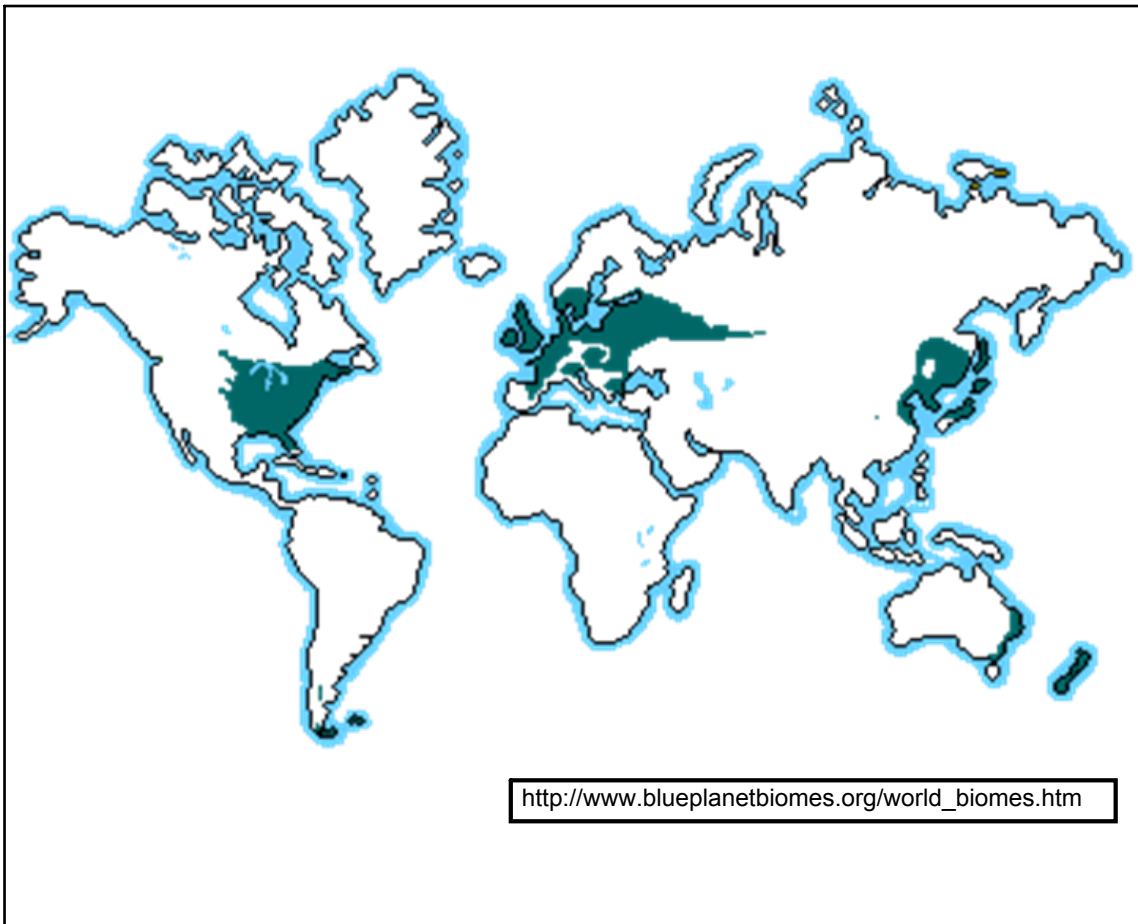
Apr 30-6:19 PM

## Temperate Deciduous Forest



[http://www.blueplanetbiomes.org/world\\_biomes.htm](http://www.blueplanetbiomes.org/world_biomes.htm)

Apr 30-6:27 PM



[http://www.blueplanetbiomes.org/world\\_biomes.htm](http://www.blueplanetbiomes.org/world_biomes.htm)

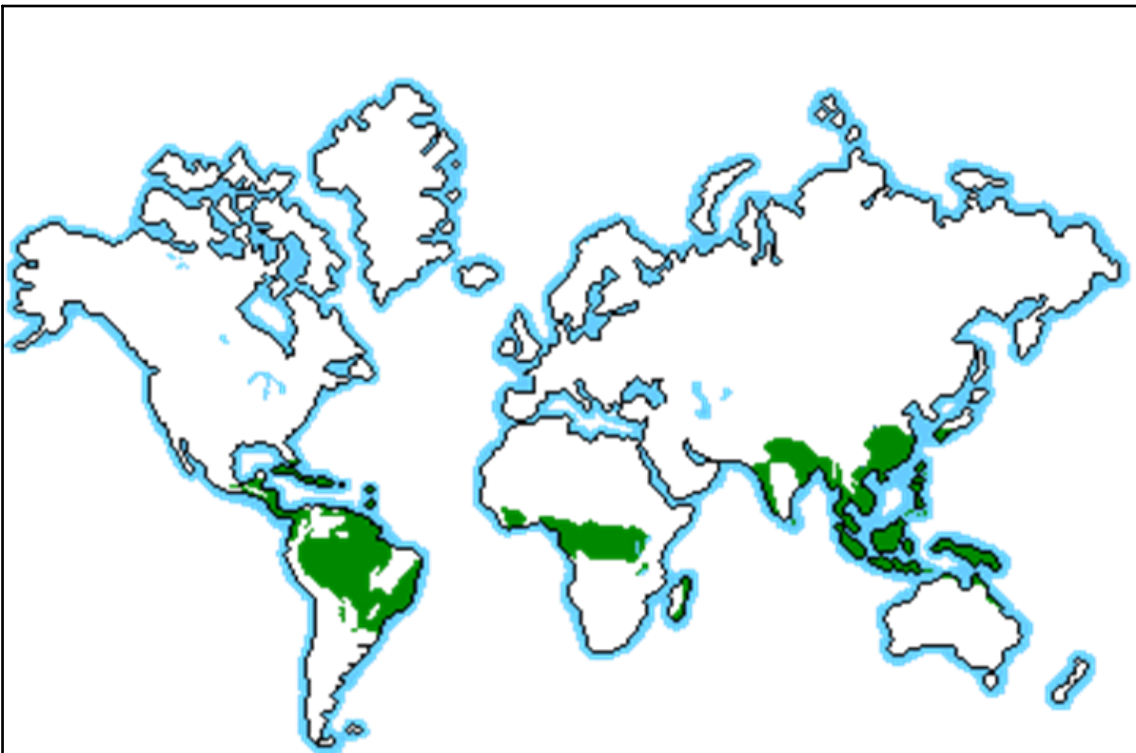
Apr 30-6:19 PM

## Tropical Rain Forest



[http://www.blueplanetbiomes.org/world\\_biomes.htm](http://www.blueplanetbiomes.org/world_biomes.htm)

Apr 30-6:28 PM



[http://www.blueplanetbiomes.org/world\\_biomes.htm](http://www.blueplanetbiomes.org/world_biomes.htm)

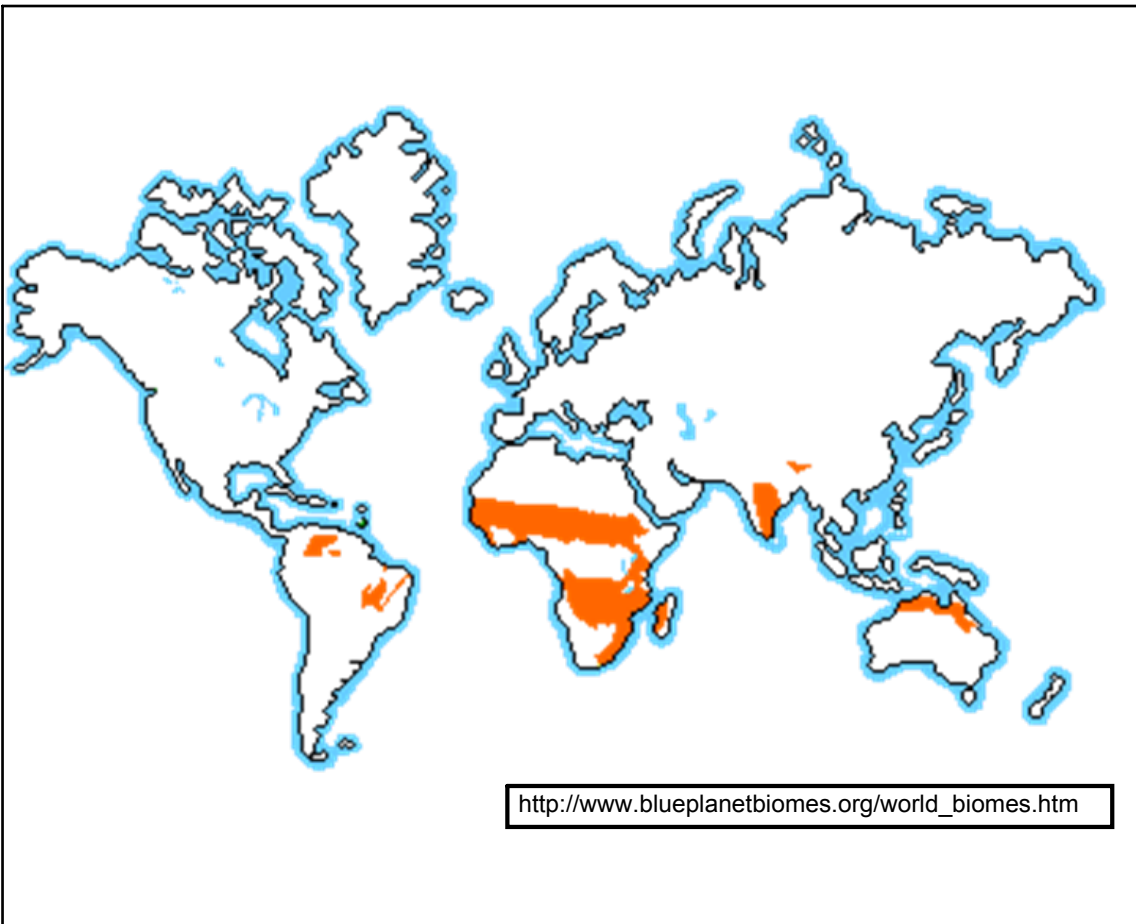
Apr 30-6:19 PM

# Savannas



[http://www.blueplanetbiomes.org/world\\_biomes.htm](http://www.blueplanetbiomes.org/world_biomes.htm)

Apr 30-6:28 PM



[http://www.blueplanetbiomes.org/world\\_biomes.htm](http://www.blueplanetbiomes.org/world_biomes.htm)

Apr 30-6:19 PM

## Freshwater

- Littoral zone - shore line
- Limnetic zone - surface but NOT shore
- Profundal zone - deep water

Apr 30-6:19 PM

## Marine

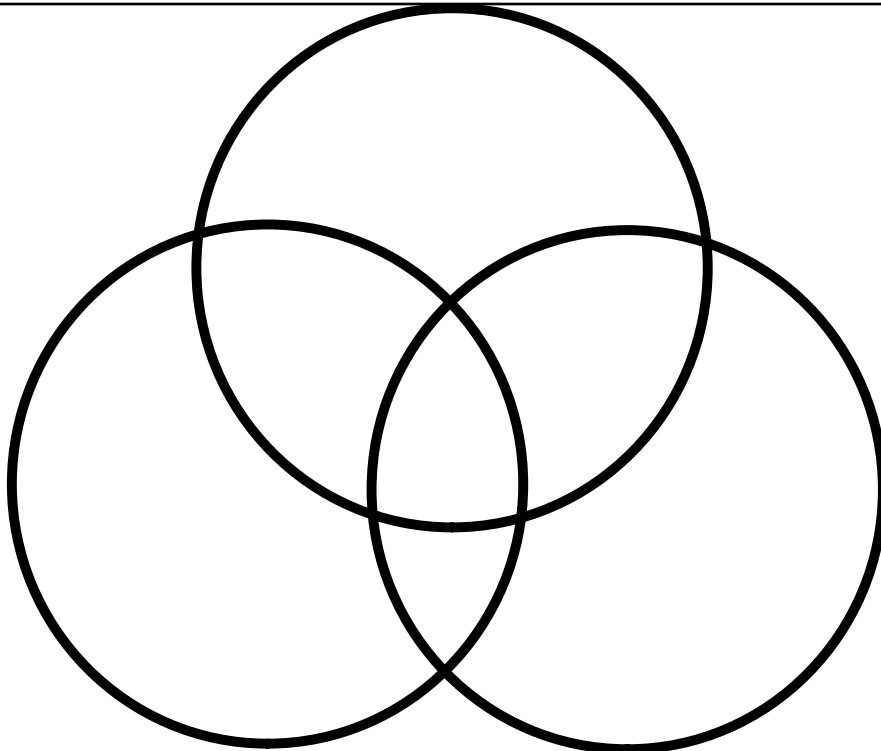
Oceans  
Seas

Apr 30-6:19 PM

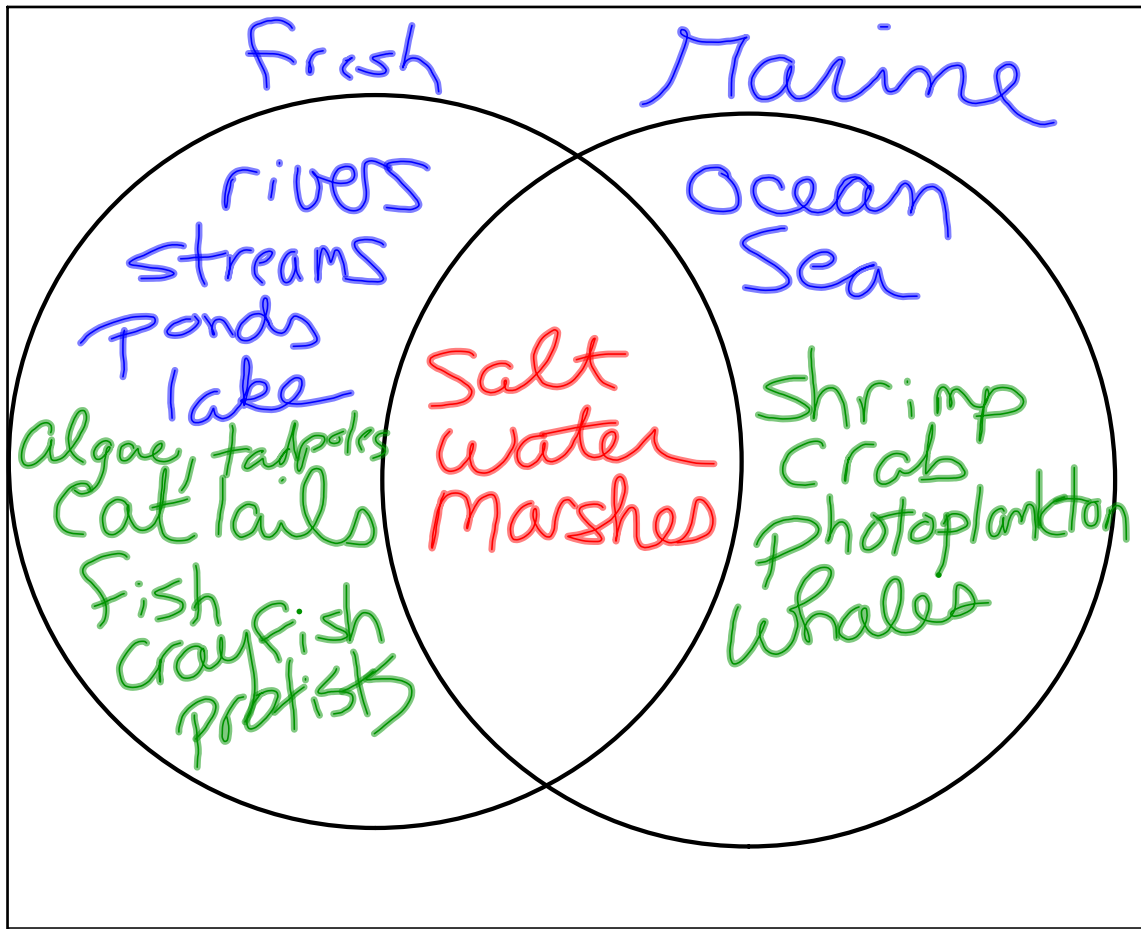
# Estuaries

between  
fresh &  
marine

Apr 30-6:19 PM



Three data sets - black



Mar 23-10:36 AM