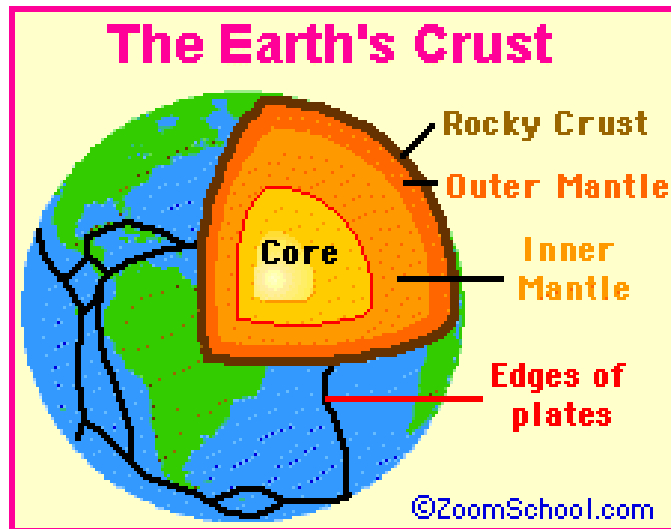


# Plate Tectonics

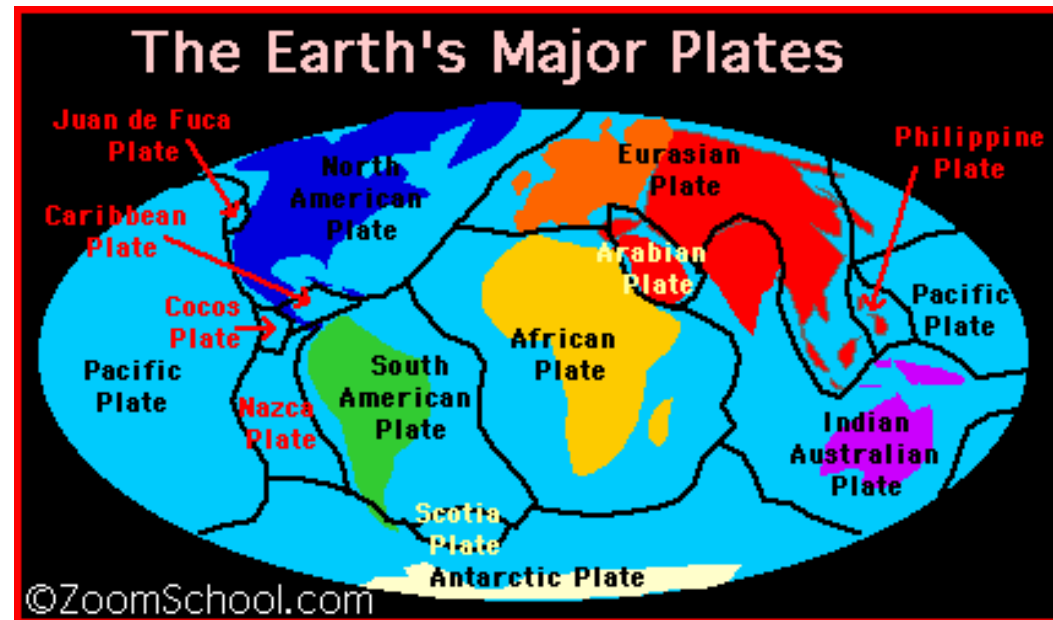


**Inner Core-solid**  
**Outer Core-liquid**

**Lower Mantle-** hot and plastic  
(moveable without breaking)

**Upper Mantle-rigid and brittle**

**Crust-** cool rigid and brittle



**Pangaea**- one gigantic super continent 200 million years ago  
**Continental drift**- process by which the continents moved apart.

**Alfred Wegener** proposed the continental drift theory

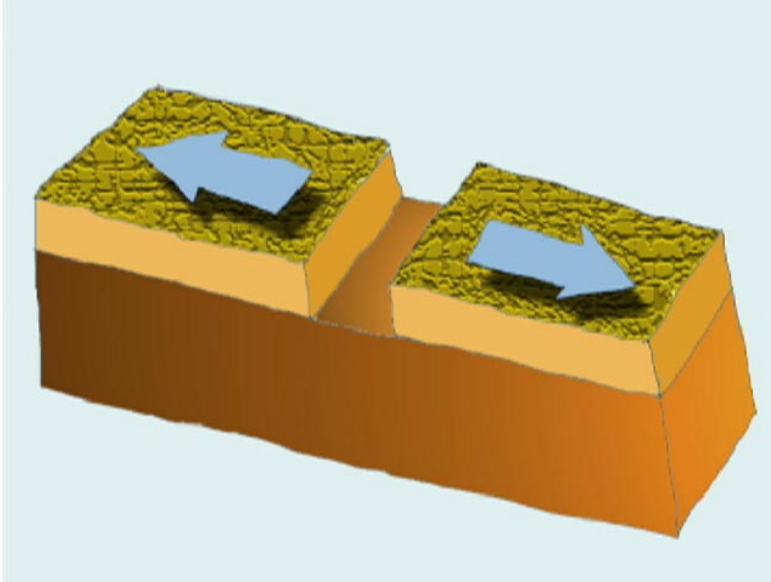
1) identical fossils

2) identical rock layers

3) continents fit together like a puzzle.



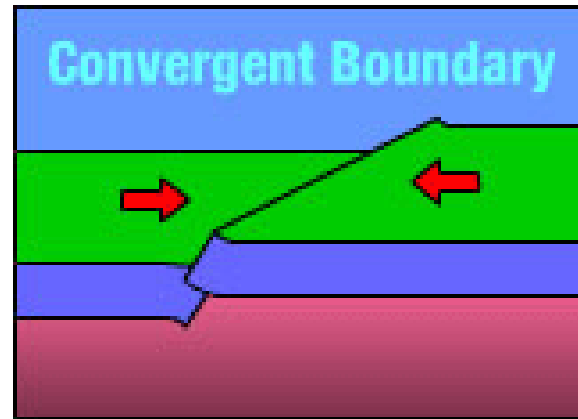
**Convection currents-** deep in the mantle that moves the drives plate tectonics.



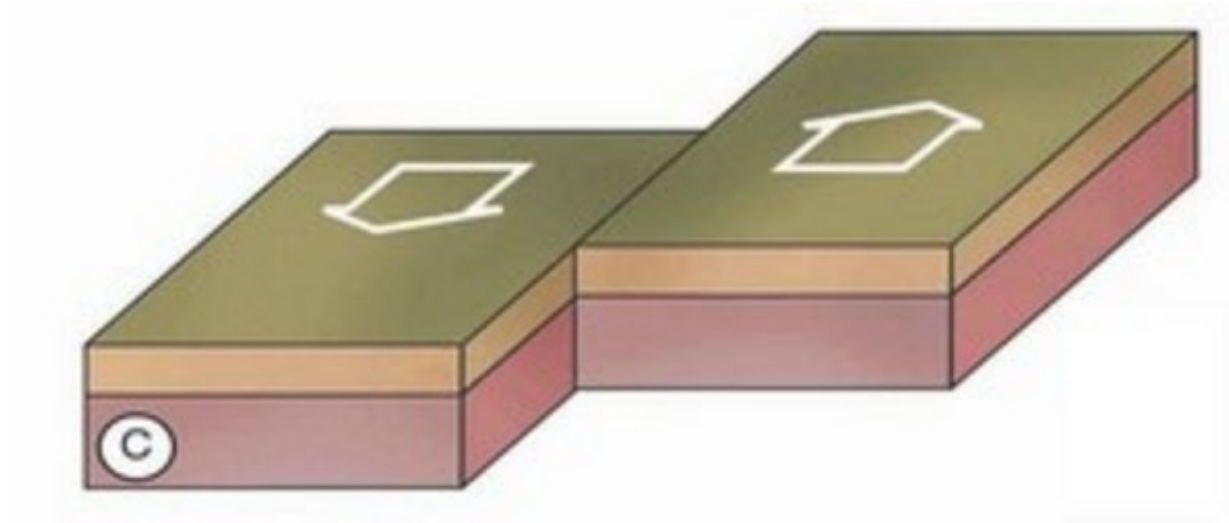
**Divergent Boundary-** mainly in the sea

Known as sea floor spreading

Allows magma to rise to surface and make new crust.



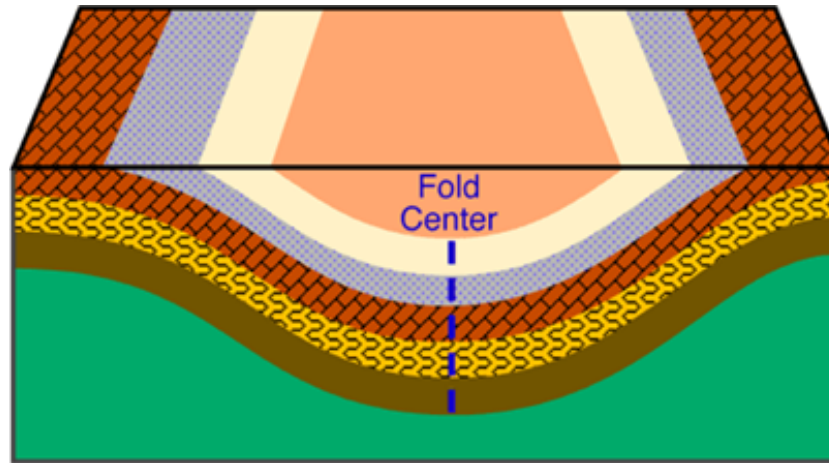
**Convergent Boundary-** two plates push together so one sinks, this makes a trench



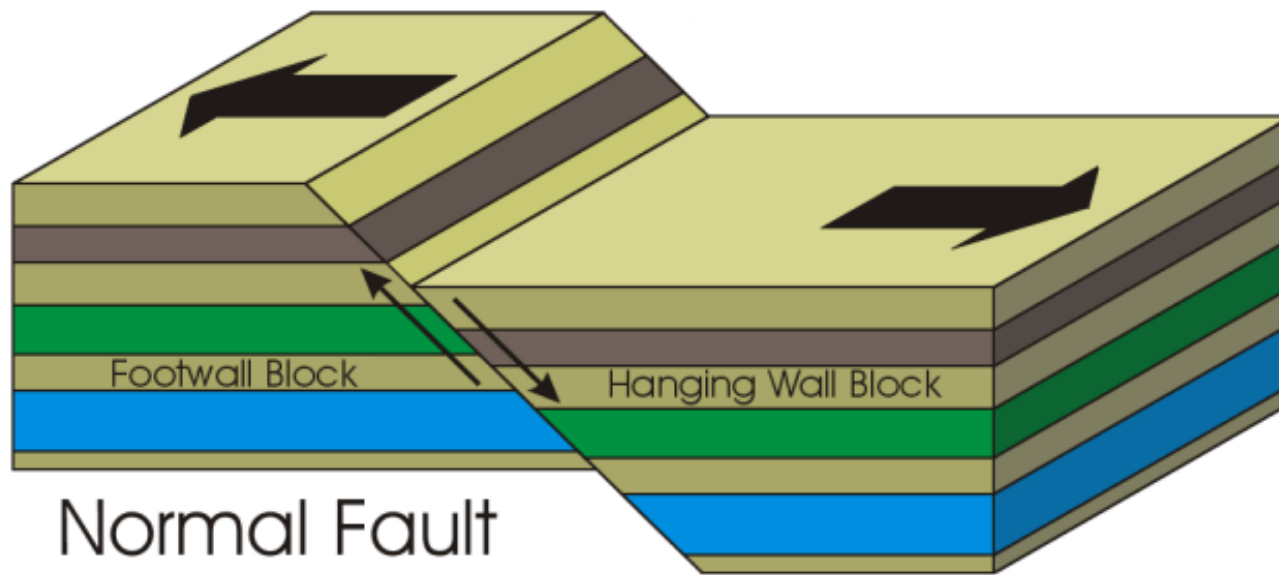
**Transform Boundary-** where two plates slide past each other



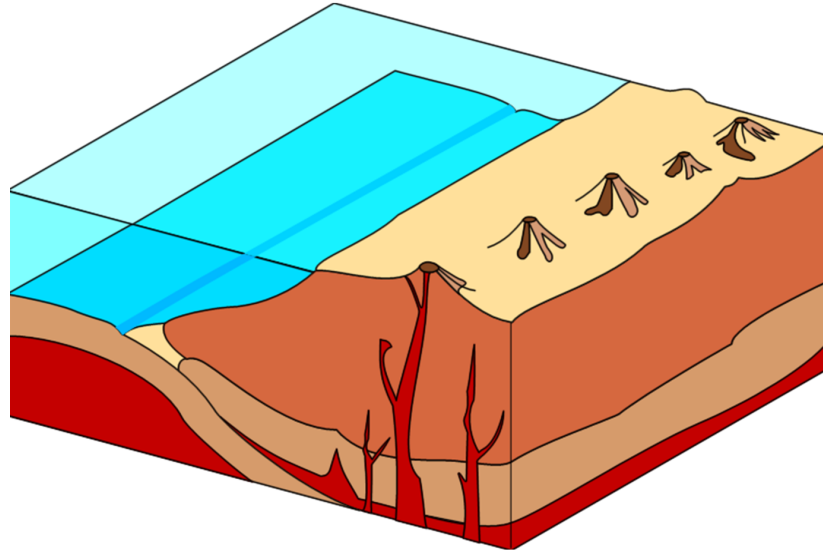
Because of plate tectonics we get



**Folding**-bends in rocks, causing mountains



**Faulting**-breaks or fractures in crust, resulting in earthquakes



**Volcanic Activity-** volcanos releasing magma

Page 283 1-4

Page 284

Page 285 1-3