

Flatworms have a middle tissue layer called mesoderm and they also have

Organs.



<http://www.ucmp.berkeley.edu/platyhelminthes/platyhelminthes.html>

Oct 17 - 10:30 PM

The flatworm
is flat so things
diffuse
through the
solid body.

Oct 17 - 10:35 PM

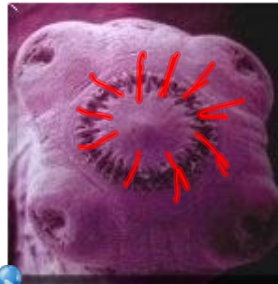
Class Tubellaria
Free-living marine flatworms



<http://www.ucmp.berkeley.edu/platyhelminthes/platyhelminthes.html>

Oct 17 - 10:36 PM

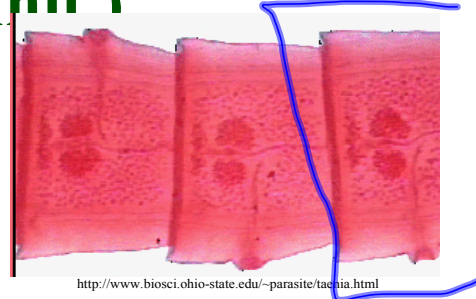
Class
Cestoda
ex tapeworms
They attach
themselves to
their host's
intestine.



<http://www.parasitecleanse.com/GALLERY.HTM>

Oct 17 - 10:37 PM

Tapeworms grow by adding
proglotids (rectangular body
 sections that are a complete
reproductive unit)



Oct 17 - 10:39 PM

The sections
 are added and
 the tapeworm
 can get to be
40 feet long.

Beef tapeworm
 lives in the muscle
 tissue of infected
cattle where
 they are enclosed
 in cyst.

Oct 17 - 10:42 PM

Class Trematoda

Largest class called flukes.

They have a tegument (thick outer covering) so they are not digest by their hosts.

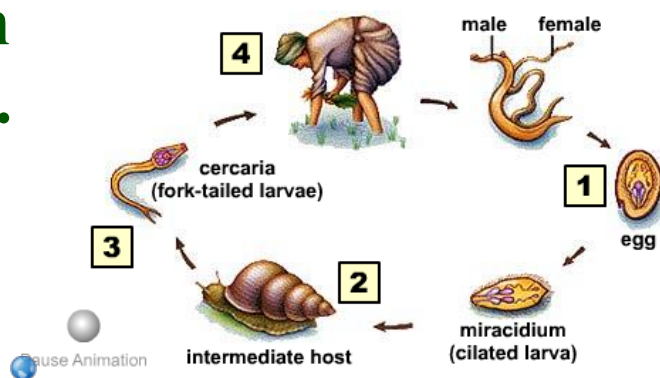


<http://www.ucmp.berkeley.edu/platyhelminthes/platyhelminthes.html>

Oct 17 - 10:45 PM

Schistosomiasis-
bore through a
host's feet in
infected water.

Flukes usually
have 2
hosts.



http://trc.ucdavis.edu/biosci10v/bis10v/media/ch16/blood_fluke.html

Oct 17 - 10:49 PM

Phylum Nematoda

Roundworms

They have a
one-way
digestive
system.

Oct 17 - 10:51 PM

About 50
roundworms
species are
plant or
animal
parasites.

Ascaris- eggs
are carried
through
human
waste to the
soil. They are
then ingested.

Oct 17 - 10:53 PM

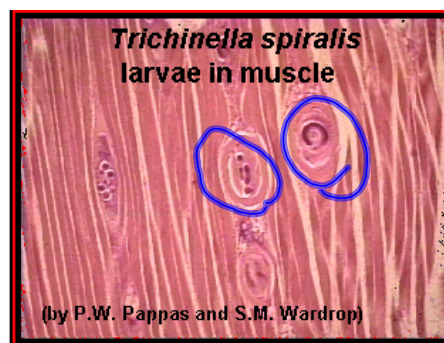
The worms
can enter the
blood stream
and be carried
to the lungs
or other
places.



Ascaris lumbricoides
<http://www.biosci.ohio-state.edu/~parasite/ascaris.html>

Oct 17 - 10:56 PM

Trichinosis- is a
disease from
eating
porc that is not
fully cooked.



<http://www.biosci.ohio-state.edu/~parasite/trichinella.html>

Oct 17 - 10:58 PM

Page 654
2-11

Oct 18 - 11:11 AM