

Write down a list of large terrestrial herbivores and large terrestrial carnivores.

Mammals

<p><i>elephant</i> <i>giraffe</i> <i>bear</i> <i>horse</i></p>	<p><i>Whales</i> <i>dolphin</i> <i>lion</i> <i>tiger</i> <i>bear</i></p> <p><i>dog</i></p>
--	--

Jan 31 - 12:49 PM

Mammals share Five Key Characteristics

Hair

Diverse, Specialized Teeth

Maintain a High Body Temperature

Nurse and Care for Young

Jan 31 - 12:50 PM

Hair

Mammals are the only species that have hair.

Hair- a filament composed of dead cells filled with keratin

Jan 31 - 12:51 PM

The primary function of hair in insulation

The coloration and pattern of a mammal's coat can help it be camouflage

Examples

Siamese cats

<http://animal.discovery.com/breedselector/catprofile.do?id=4020>

Arctic Fox

<http://www.nhptv.org/natureworks/arcticfox.htm>

Jan 31 - 12:52 PM

The color of the coat could also warn things like stay away for example a skunk

Some hair have specials sensory functions like whiskers on a cat

Jan 31 - 12:54 PM

Mammals have Diverse, Specialized Teeth

Mammals usually only have 2 sets of teeth

The first is called baby or milk teeth

Then they are replaced later in life by permanent teeth

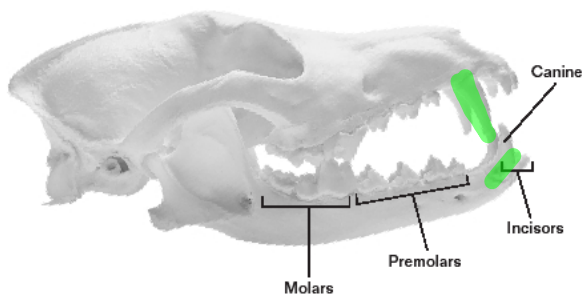
Jan 31 - 12:54 PM

Teeth are used to chew food, secure food, protection, threat signal

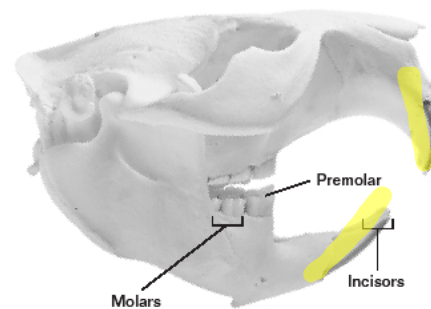
Four types of teeth

- Incisors- front teeth for biting and cutting
- Canines- for stabbing and holding
- Premolars and Molars for crushing and grinding

Jan 31 - 12:54 PM



Coyote skull



Beaver skull

BIO SOURCES
TRANSPARENCY MASTER

Jan 31 - 12:55 PM

Mammals chew their food smaller than reptiles so they can digest food quicker and keep enough energy for metabolism

Jan 31 - 12:56 PM

Mammals maintain a High Body Temperature

Mammals maintain their own body temp and so they can be active any time of day

A mammal must eat 10 times as much as an ectoderm of similar size to maintain its body temp

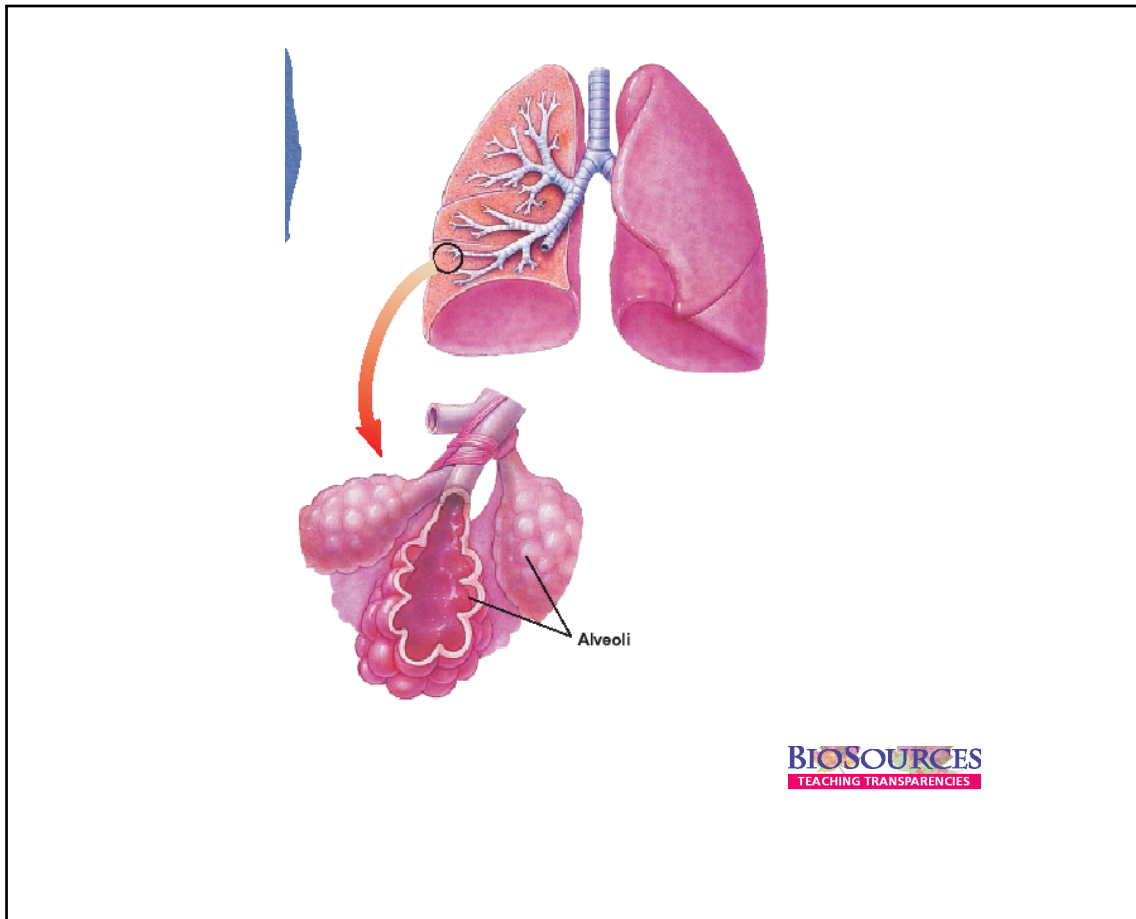
Jan 31 - 12:56 PM

Respiratory System

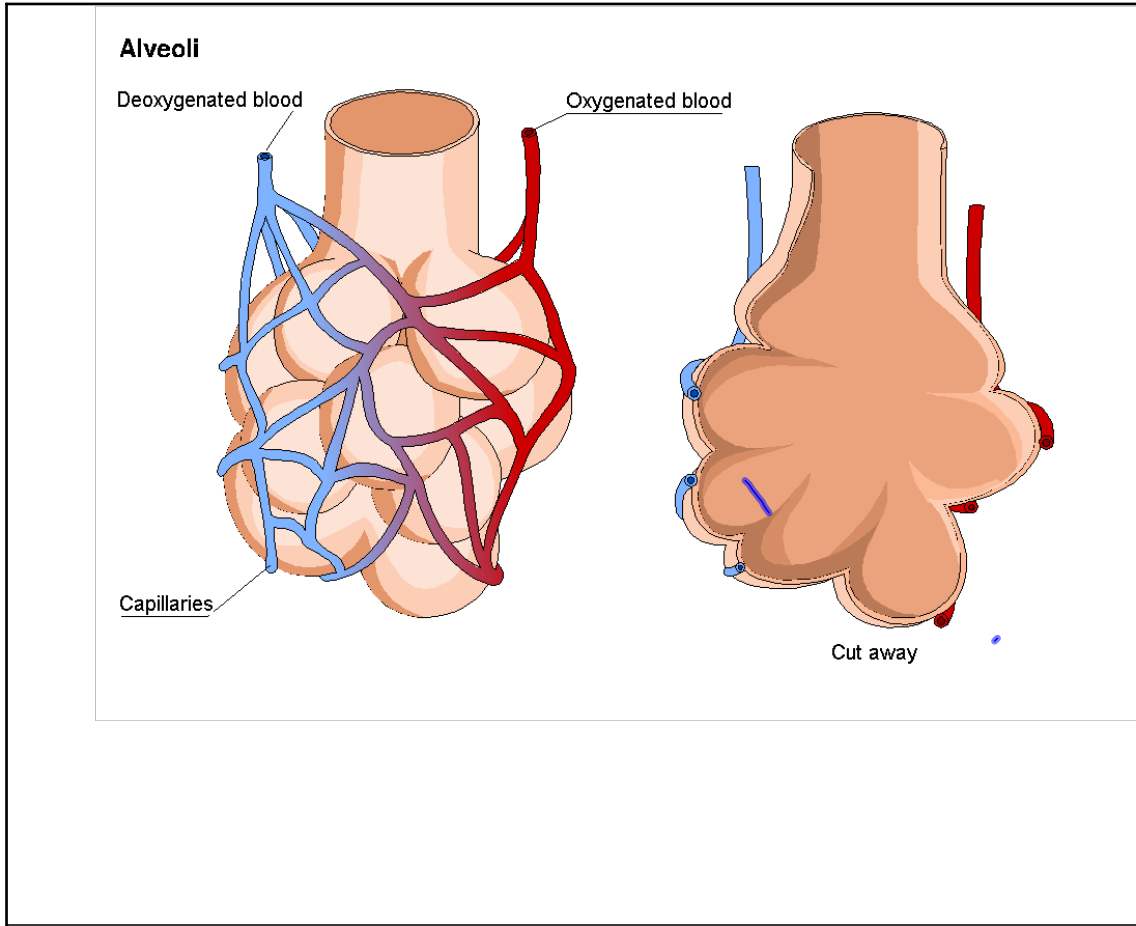
Mammalian lungs have a large space for gas exchange

In more active mammals that lungs are not larger but the alveoli in the lungs are smaller and more numerous

Jan 31 - 12:56 PM



Jan 31 - 12:57 PM



Alveoli



Jan 31 - 12:58 PM

Heart and Circulation
4 chambered heart

Jan 31 - 12:57 PM



Jan 31 - 12:59 PM

Mammals Nurse and Care for Young

Mammary Glands located in the female's chest or abdomen produce milk

Jan 31 - 12:59 PM

The milk is rich in protein, carbs, and fat
This contains water and important minerals

Young mammals are on milk until
Weaned

Young mammals are dependant on their mother for a long period of time. They received food and Shelter from her.

Jan 31 - 12:59 PM