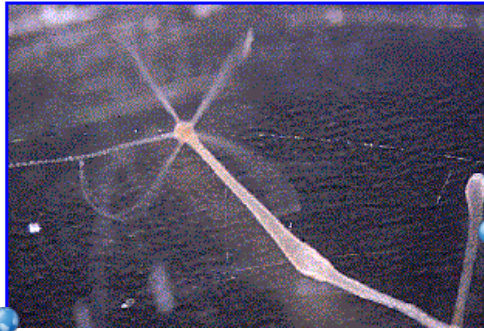


- Cnidarians
 - Sea anemone, jellyfish, hydra, coral



<http://www.ucmp.berkeley.edu/cnidaria/hydrozoa.html>



<http://www.cyhaus.com/marine/anemone.htm>

- Two body forms
 - _____ - free-floating jelly-like forms
 - Often umbrella shaped



<http://www2.hawaii.edu/~ortogero/jellyfish.html>

- Polyp- forms are _____ like and attached to a rock
 - Usually fringe like _____ surround the _____ located at the _____ end of the body



<http://www.cyhaus.com/marine/anemone.htm>

- Many exist only as a _____ while some only as _____
- Some have both phases in their life

Cnidarians have tissues

- There are _____ body layers ectoderm and _____

Cnidocytes

- The tentacles have _____ cells
 - These are what give the _____ their name
- Within each there is a nematocyst (small barbed harpoon)

- Some contain deadly toxins, some only stun and kill
- When the food is stung the tentacles then push the food into the _____ cavity

Extra cellular digestion

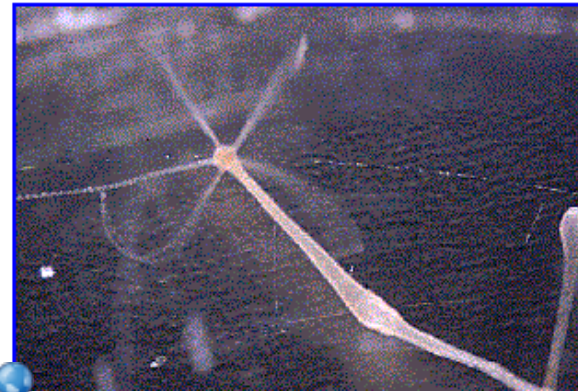
- Digestion occurs _____ the cell
- Enzymes break down food into small fragments
- The cells lining the cavity _____ the fragments

- Digestion completes

-
- This allows cnidarians to feed on things smaller than their cells

Class Hydrozoa- most primitive cnidarians

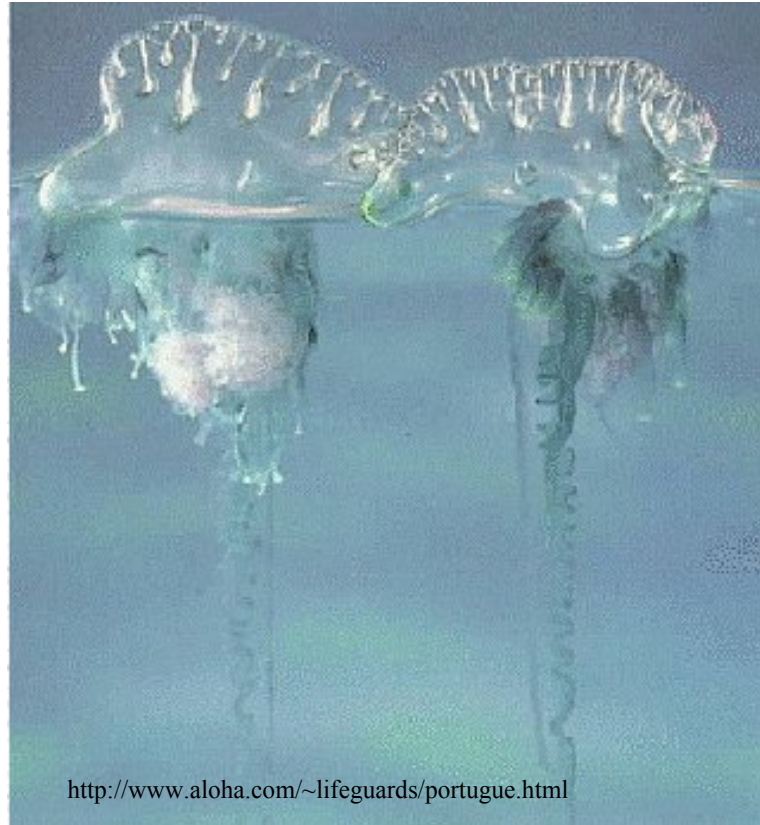
- Colonial organism
- Spend life as _____ and _____



<http://www.ucmp.berkeley.edu/cnidaria/hydrozoa.html>

- Freshwater
 - *Hydra* are unique because they exist only as _____
 - Solitary
 - Live in quiet lakes, ponds, or streams
 - _____-secrete substance to glide on
 - Sometimes they move by _____

- Marine
- Live together in _____
- Portuguese man-of-war
- Incorporate medusa and polyps
- A gas filled float allows the animal to _____ on the surface of the water



- Tentacles reach up to _____
long
- They are used to stun and entangle prey
- They have powerful _____ in the
tentacles
- It is even harmful to _____

- Reproduction in hydrozoans
 - In most polyps reproduce _____
by budding
 - Many are also capable of sexual reproduction

- Class Scyphozoa
 - Latin skyphos cup zoia animal
 - True jellyfish
 - Active predators that ensnare their prey with their _____
 - Some are as small as a _____ others are as large as a queen-size _____

- In many Asian countries they eat

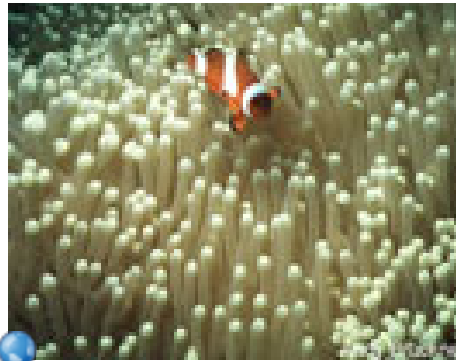
-
- The _____ in the food breaks down the toxins.



<http://www2.hawaii.edu/~ortogero/jellyfish.html>

- Class Anthozoans
 - _____ class
 - Only polyps
 - Bright color like sea anemones and corals
 - thick stalk like body surrounded with tentacles in groups of _____

- Nearly all _____ water ones have symbiotic algae such as dinoflagellates
 - The color of most of these is actually the
-



<http://www.coralreef.noaa.gov/>



<http://www.cyhaus.com/marine/anemone.htm>

- Sea anemones
 - 0.2 inches to 4.0 inches
 - feed on _____ and other things that swim past their tentacles
 - when touched they retract their _____ and curl into a tight _____

- They can _____ by pulling themselves in _____ halves
- this results in large population of genetically _____ sea anemones



<http://www.cyhaus.com/marine/anemone.htm>

- Corals
 - Live in colonies called _____
 - Live in _____ relationships with algae
 - The algae provides _____ while the coral provides _____

- The top layer of the reef has _____
polyp
- The coral are living on top of old
skeletons

- As many as _____ species of animals live on one reef
- Coral reef protect coastlines from _____ erosion
- The Great Barrier Reef is the largest
 - 1,200 miles distance from Warren to Dallas, Texas. 19 hours

