

Flatworms have a middle tissue layer called _____ and they also have _____.

**Phylum
Platyhelminthes**



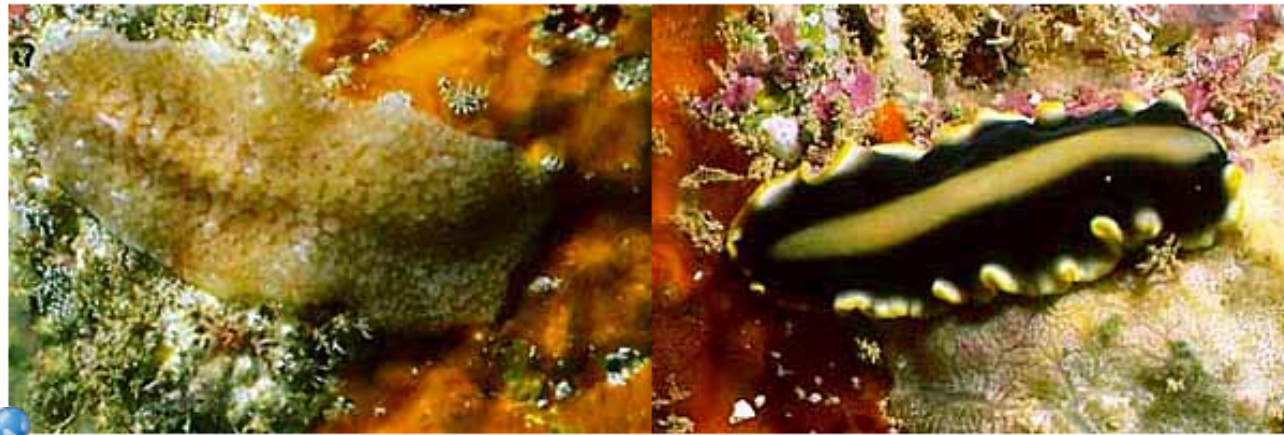
<http://www.ucmp.berkeley.edu/platyhelminthes/platyhelminthes.html>

**The flatworm
is flat so things**

**through the
solid body.**

Class _____

Free-living marine flatworms



<http://www.ucmp.berkeley.edu/platyhelminthes/platyhelminthes.html>

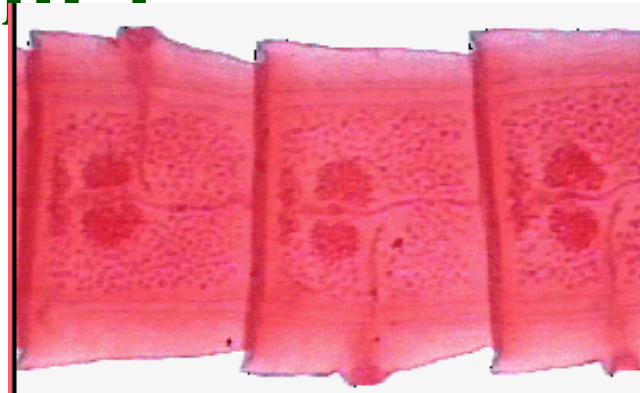
Class

ex tapeworms
They attach
themselves to
their host's



<http://www.parasitecleanse.com/GALLERY.HTM>

**Tapeworms grow by adding
_____ (rectangular body
sections that are a complete
_____ unit)**



<http://www.biosci.ohio-state.edu/~parasite/taenia.html>

**The sections
are added and
the tapeworm
can get to be
_____ feet long.**

**Beef tapeworm
lives in the muscle
tissue of infected
_____ where
they are enclosed
in _____.**

Class _____
Largest class called flukes.
They have a tegument (thick
_____ covering) so they are
not _____ by their hosts.

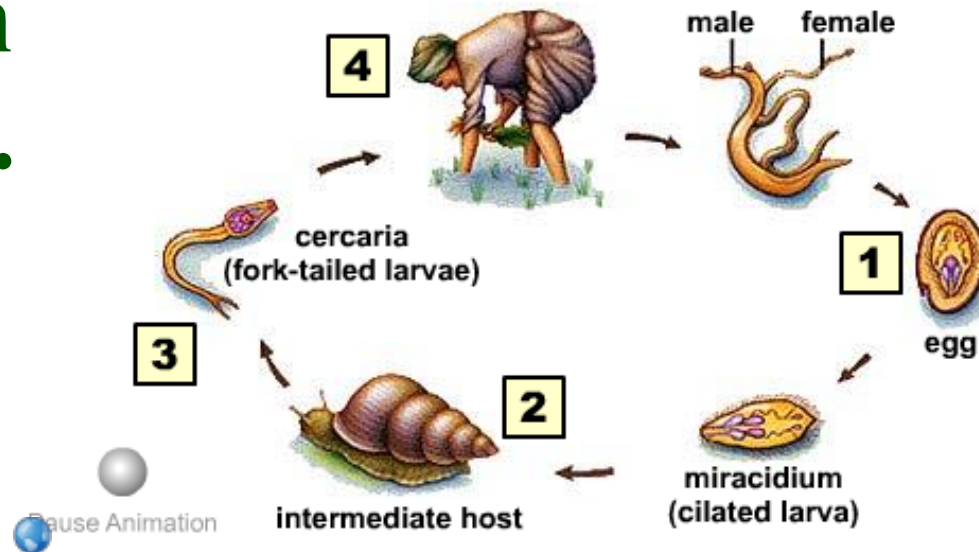


<http://www.ucmp.berkeley.edu/platyhelminthes/platyhelminthes.html>



Schistosomiasis-
bore through a
host's _____ in
infected water.

Flukes usually
have _____
hosts.



http://trc.ucdavis.edu/biosci10v/bis10v/media/ch16/blood_fluke.html

**Phylum
Nematoda**

Roundworms

They have a

**digestive
system.**

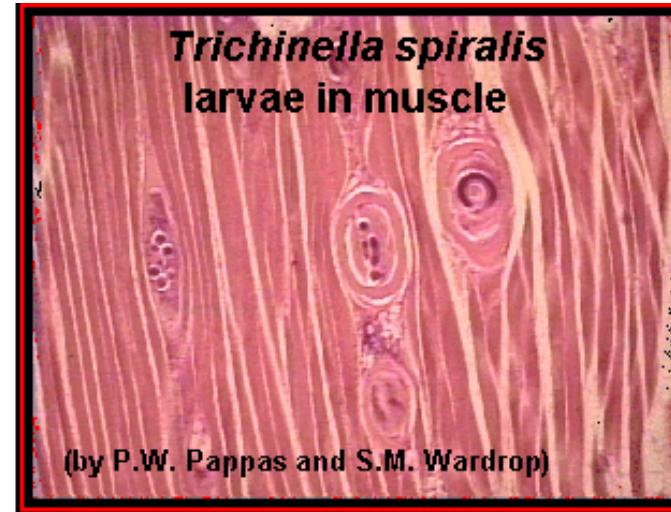
**About _____
roundworms
species are
plant or
animal
parasites.**

**Ascaris- eggs
are carried
through
human
_____ to the
soil. They are
then _____.**

**The worms
can enter the
_____ stream
and be carried
to the _____
or other
places.**



**Trichinosis- is a
disease from
eating
 that is not
fully cooked.**



<http://www.biosci.ohio-state.edu/~parasite/trichinella.html>

Page 654
2-11