

Phylum Annelida

The first _____ animals

Size range of 1mm to 3m

Examples: earthworm and fireworm



<http://www.kidcyber.com.au/IMAGES/earthworms.jpg>



Hermodice carunculata, Bearded Fireworm at MarineBio.org

Each _____ contains digestive, excretory, circulatory, and locomotor organs

Some segments are modified for specific

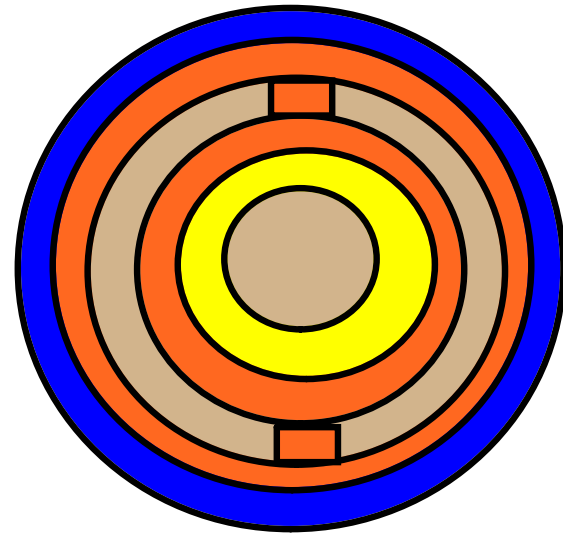
Cerebral ganglion- primitive _____

The brain is _____ to a _____
cord that runs the entire _____ of the
body

Septa- internal body wall that separate the
segments

Characteristics of Annelids

1. Coelom- fluid-filled coelom located entirely in the _____



2. Organ systems- closed circulatory system and a highly modified gut

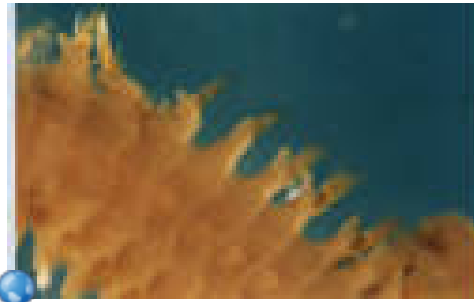
3. Bristles- _____ bristles (setae)
- a. They are paired on each segments and
_____ traction
- b. Parapodia- some annelids also have
fleshy appendages



Hermodice carunculata, Bearded Fireworm at MarineBio.org



Parapodia and the _____ of setae on each segment are used to _____ the organism



<http://dbsdb.nus.edu.sg/epic/biramous2.jpg>

Class Polychaeta

_____ Worms

The _____ group of annelids

Unusual forms and iridescent _____

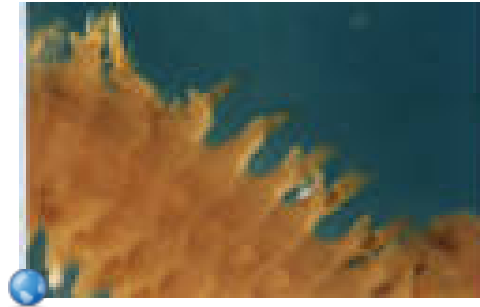
They have parapodia that are fleshy and
paddle-like



Hermodice carunculata, Bearded Fireworm at MarineBio.org



They are used to swim, _____, or crawl
They greatly increase the animals
_____ area for gas _____



<http://dbsdb.nus.edu.sg/epic/biramous2.jpg>

Tubeworms

Live in protective _____ formed by hard secretions of _____

Sometimes only their head is stuck out of the _____

Examples: nereis and feather dusters



<http://miljolare.no/virtue/img/nydisk2004/images/008%20Nereis%2006.jpg>



<http://saltaquarium.about.com/blclipartfduster2.htm>

Class Oligochaeta

Earthworms and some _____ water
worms

Lack a distinctive _____ region and
have no _____

Have light sensitive _____ located on
each _____ of their body

Earthworm's Digestion

Eat their way through _____

They consume their own body _____
in soil each _____

Food moves from the esophagus, crop
(storage _____), gizzard (grinds the
food), intestine (food _____)

Respiration

oxygen and carbon _____ diffuse

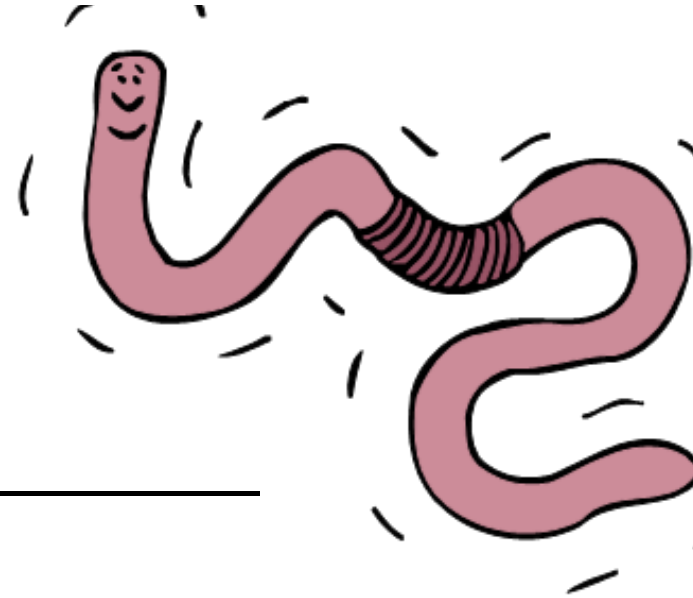
through the _____

Reproduction

Hermaphrodites

They do not self-_____

Clitellum release a
cocoon that surrounds that _____



Brain

Coordinates the _____ activity

Process the _____ from the light
sensitive _____

Class Hirudinea

Had blood suckers at both _____ of its
body

Most are _____ or scavengers

Some are _____ on vertebrates or
crustaceans

Lack both setae and parapodia

Has a flattened _____

The segments are not separated
