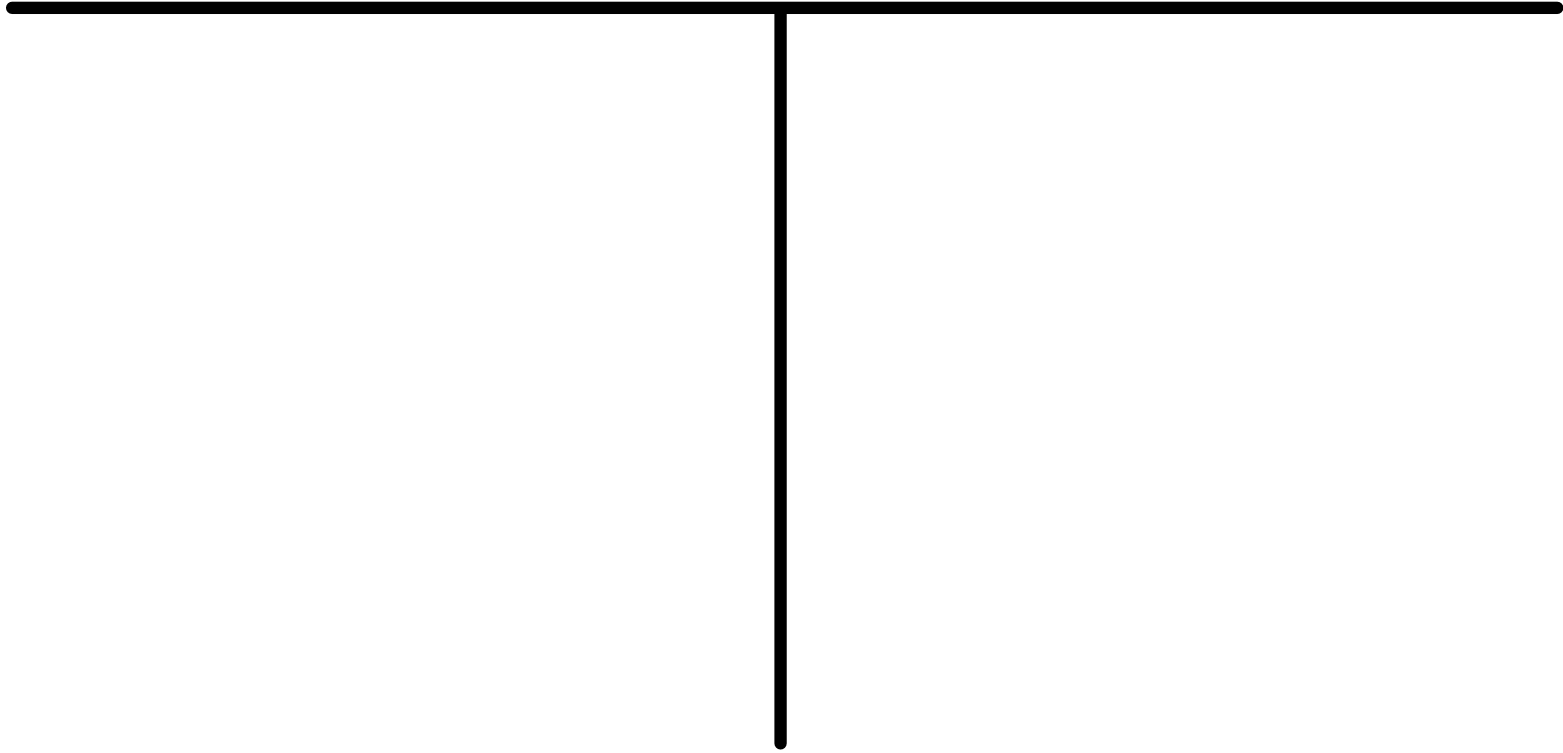


Write down a list of large terrestrial herbivores and large terrestrial carnivores.

A large T-shaped line structure, consisting of a horizontal line at the top and a vertical line extending downwards from the center of the horizontal line. This structure is likely a placeholder for a list or diagram.

Mammals share Five Key Characteristics

Hair

Diverse, Specialized Teeth

Maintain a High Body Temperature

Nurse and Care for Young

Hair

Mammals are the only _____
that have hair.

Hair- a filament composed of
_____ cells filled with keratin

The primary function of hair in

The coloration and _____ of a mammal's coat can help it be camouflage

Examples

Siamese cats

<http://animal.discovery.com/breedselector/catprofile.do?id=4020>

Arctic Fox

<http://www.nhptv.org/natureworks/arcticfox.htm>

The color of the coat could also warn things like stay _____ for example a skunk

Some hair have specials _____ functions like whiskers on a cat

Mammals have Diverse, Specialized Teeth

Mammals usually only have
_____ sets of teeth

The first is called _____ or milk
teeth

Then they are replaced later in life by
permanent teeth

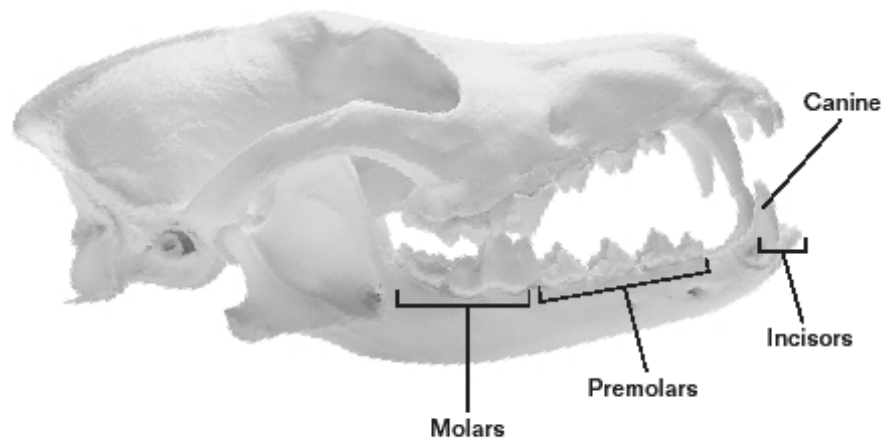
Teeth are used to chew food, secure food, protection, threat signal

Four types of teeth

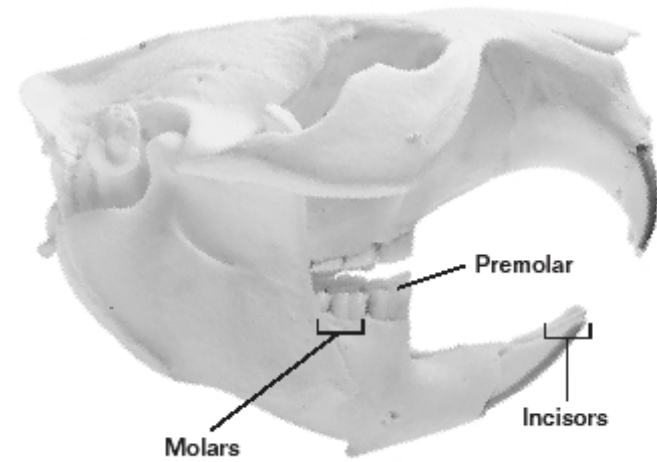
- Incisors- front teeth for biting and

- Canines- for stabbing and holding

- Premolars and Molars for _____
and grinding



Coyote skull



Beaver skull

Mammals chew their food smaller
than reptiles so they can digest food
_____ and keep enough energy
for _____

Mammals maintain a High Body Temperature

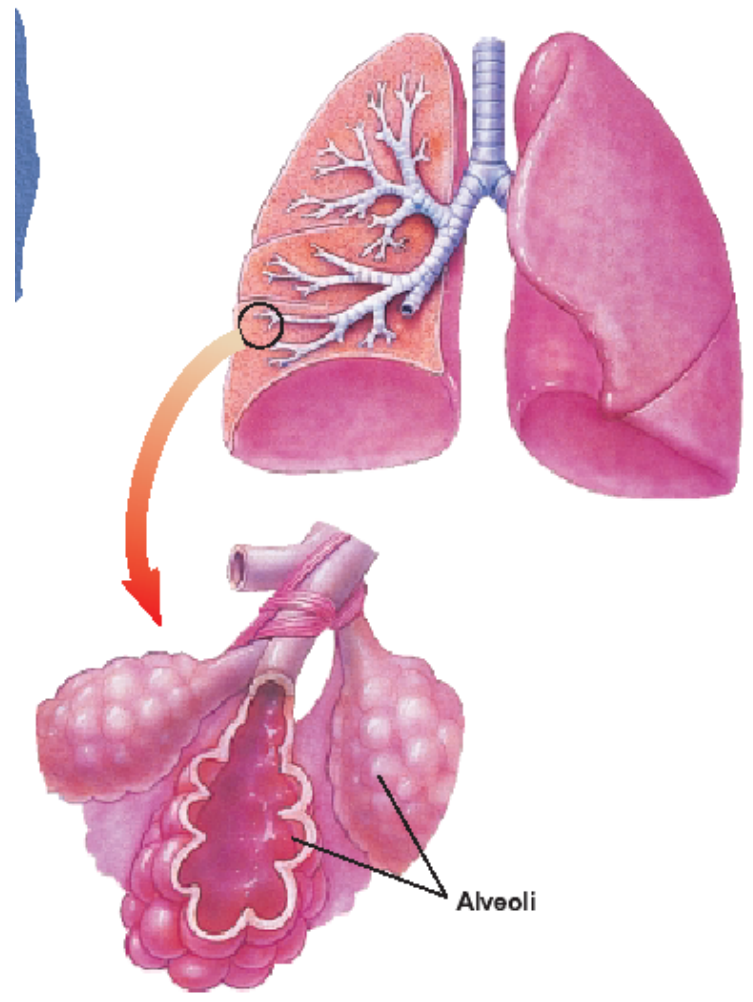
Mammals maintain their own body temp and so they can be _____ any time of _____

A mammal must eat ____ times as much as an ectoderm of similar size to maintain its body temp

Respiratory System

Mammalian lungs have a large space for gas _____

In more active mammals that lungs are not larger but the alveoli in the lungs are _____ and more

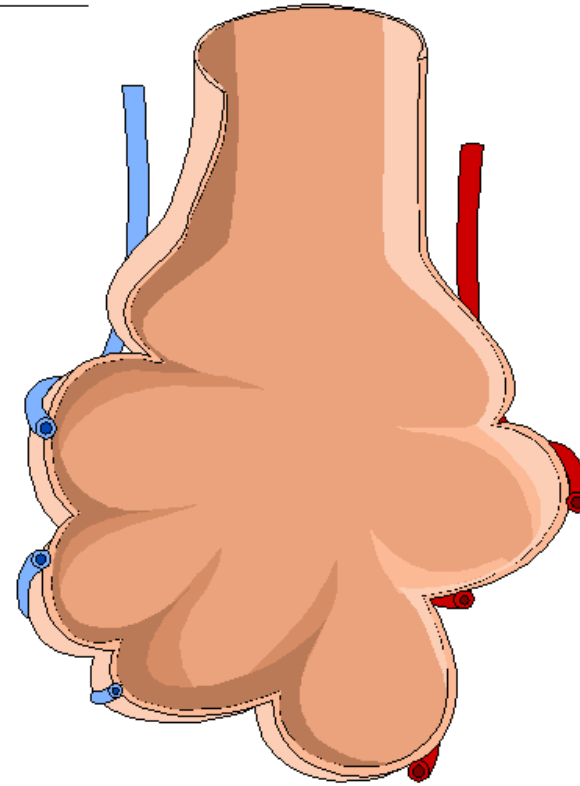
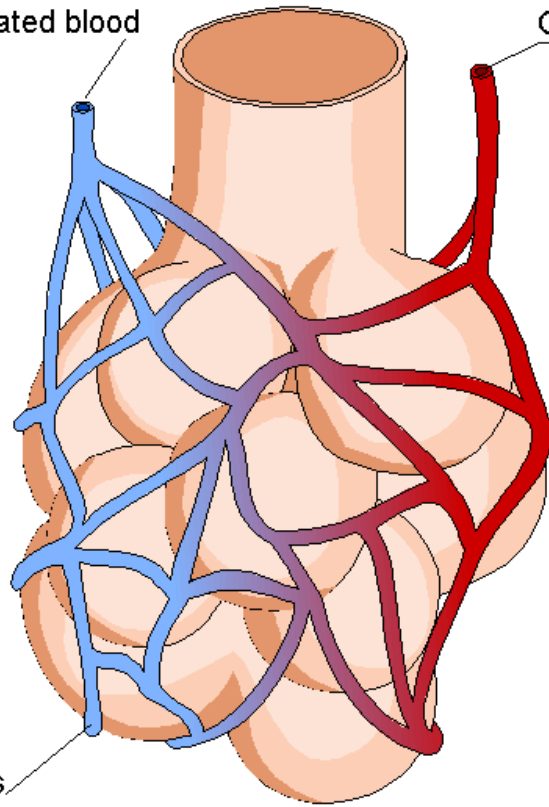


Alveoli

Deoxygenated blood

Oxygenated blood

Capillaries



Cut away



Heart and Circulation

_____ chambered heart



Mammals Nurse and Care for Young

Mammary Glands located in the female's chest or _____ produce milk

The milk is rich in _____, carbs, and fat

This contains water and important
minerals

Young mammals are on milk until

Young mammals are dependant on their
mother for a long period of time. They
received food and _____ from her.