

Flatworms have a middle tissue layer called Mesoderm and they also have Organs.

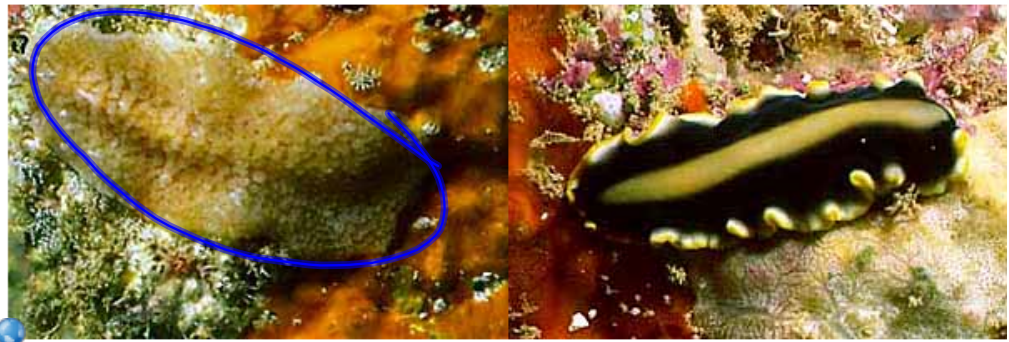
**Phylum**  
**Platyhelminthes**



<http://www.ucmp.berkeley.edu/platyhelminthes/platyhelminthes.html>

**The flatworm  
is flat so things  
diffuse  
through the  
solid body.**

**Class** Turbellaria  
**Free-living marine flatworms**



<http://www.ucmp.berkeley.edu/platyhelminthes/platyhelminthes.html>

**Class**

Cestoda  
**ex tapeworms**

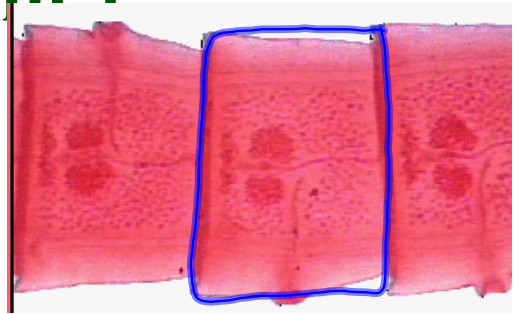
**They attach  
themselves to  
their host's**

intestine.



<http://www.parasitecleanse.com/GALLERY.HTM>

**Tapeworms grow by adding**  
proglottids (rectangular body  
sections that are a complete  
reproductive unit)



<http://www.biosci.ohio-state.edu/~parasite/taenia.html>

The sections  
are added and  
the tapeworm  
can get to be  
40 feet long.

Beef tapeworm  
lives in the muscle  
tissue of infected  
cattle where  
they are enclosed  
in cysts.

**Class** Trematoda

**Largest class called flukes.**

**They have a tegument (thick**

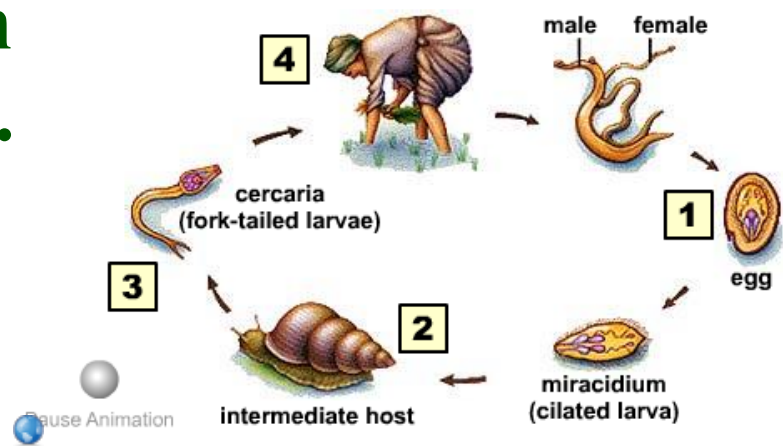
outer **covering) so they are**  
**not** digested **by their hosts.**



<http://www.ucmp.berkeley.edu/platyhelminthes/platyhelminthes.html>

**Schistosomiasis-**  
**bore through a**  
**host's feet in**  
**infected water.**

**Flukes usually**  
**have 2**  
**hosts.**



[http://trc.ucdavis.edu/biosci10v/bis10v/media/ch16/blood\\_fluke.html](http://trc.ucdavis.edu/biosci10v/bis10v/media/ch16/blood_fluke.html)



# **Phylum Nematoda**

## **Roundworms**

**They have a**

**One-way  
digestive  
system.**

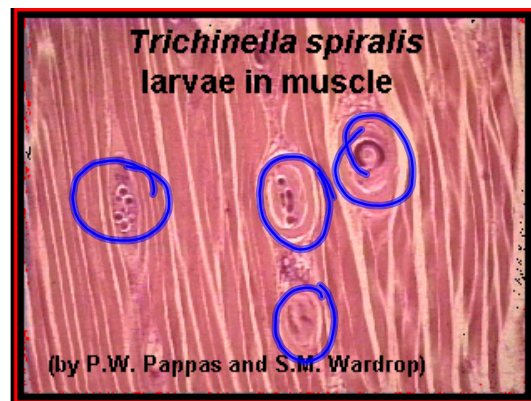
About 50  
roundworms  
species are  
plant or  
animal  
parasites.

Ascaris- eggs  
are carried  
through  
human  
waste to the  
soil. They are  
then digested.

The worms  
can enter the  
blood stream  
and be carried  
to the lung  
or other  
places.



**Trichinosis- is a  
disease from  
eating  
Pork that is not  
fully cooked.**



<http://www.biosci.ohio-state.edu/~parasite/trichinella.html>

**Page 654**  
**2-11**