

There are six important function to tissues and organs:

digestion

respiration

circulation

conduction of nerve impulses

support

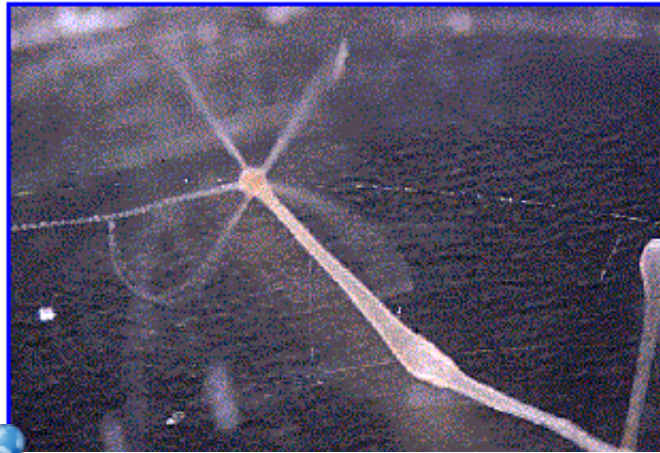
excretion

Digestion

Single cell organisms digest their food
_____ their cells.

Other animals use digestive enzymes
_____ of their cells.

Gastrovascular cavity-
a digestive cavity with _____ opening.



<http://www.ucmp.berkeley.edu/cnidaria/hydrozoa.html>

Other animals have a digestive tract with _____ openings (_____ and anus)

This system allows for _____.

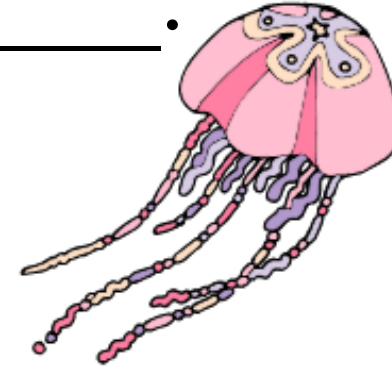


Respiration

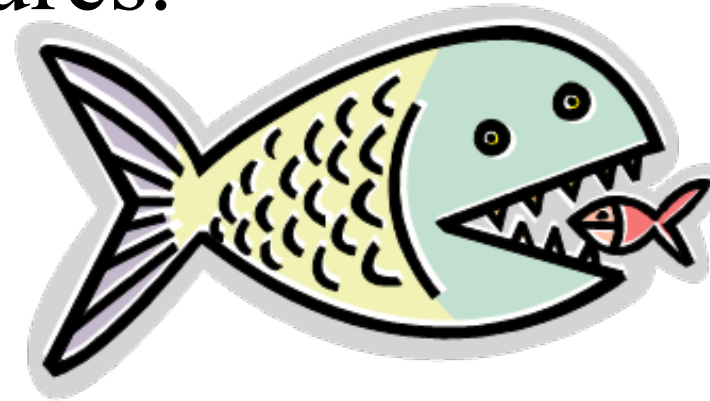
Respiration is the uptake of _____ and the release of _____.

It can only take place across a _____ surface.

Simple animals use _____.

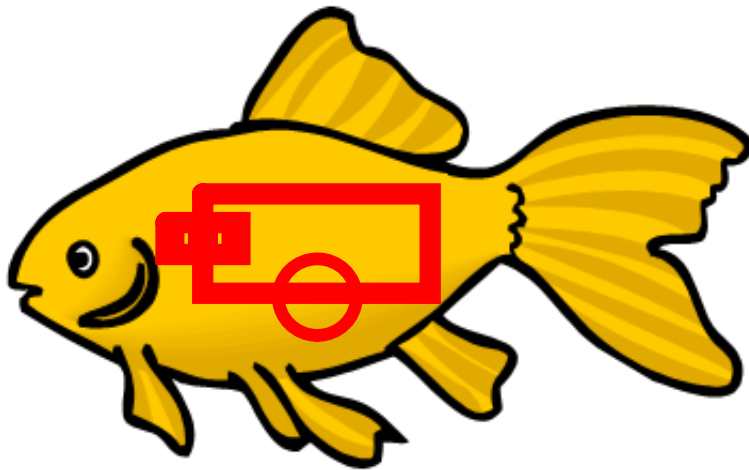


Complex animals have specific
_____ structures.



Circulation

_____ circulatory system

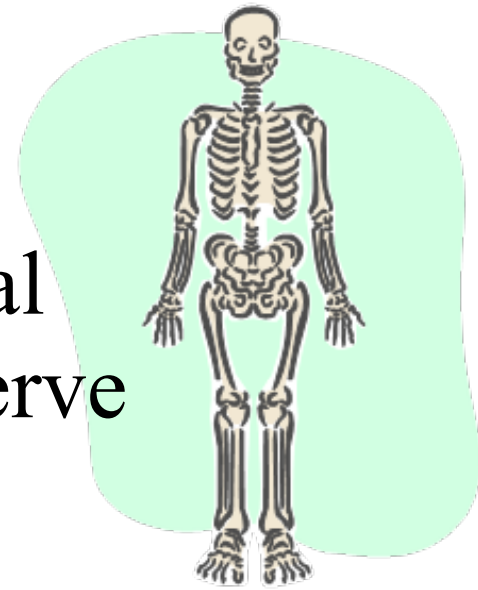


_____ circulatory system



Conduction of nerve impulses

Members of all the major animal phyla except _____ have nerve cells.



Nerve net- all cells are similar and _____ together



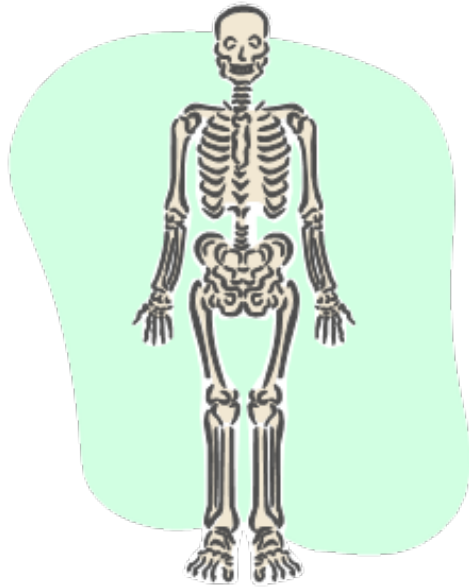
Cephalization-anterior concentration of sensory structures and nerves

Support

Hydrostatic skeleton- water that is contained under pressure in a closed cavity. _____

Exoskeleton-a rigid external skeleton

Endoskeleton- hard material within the animal _____



Excretion

Removal of
wastes produced
by cellular
metabolism