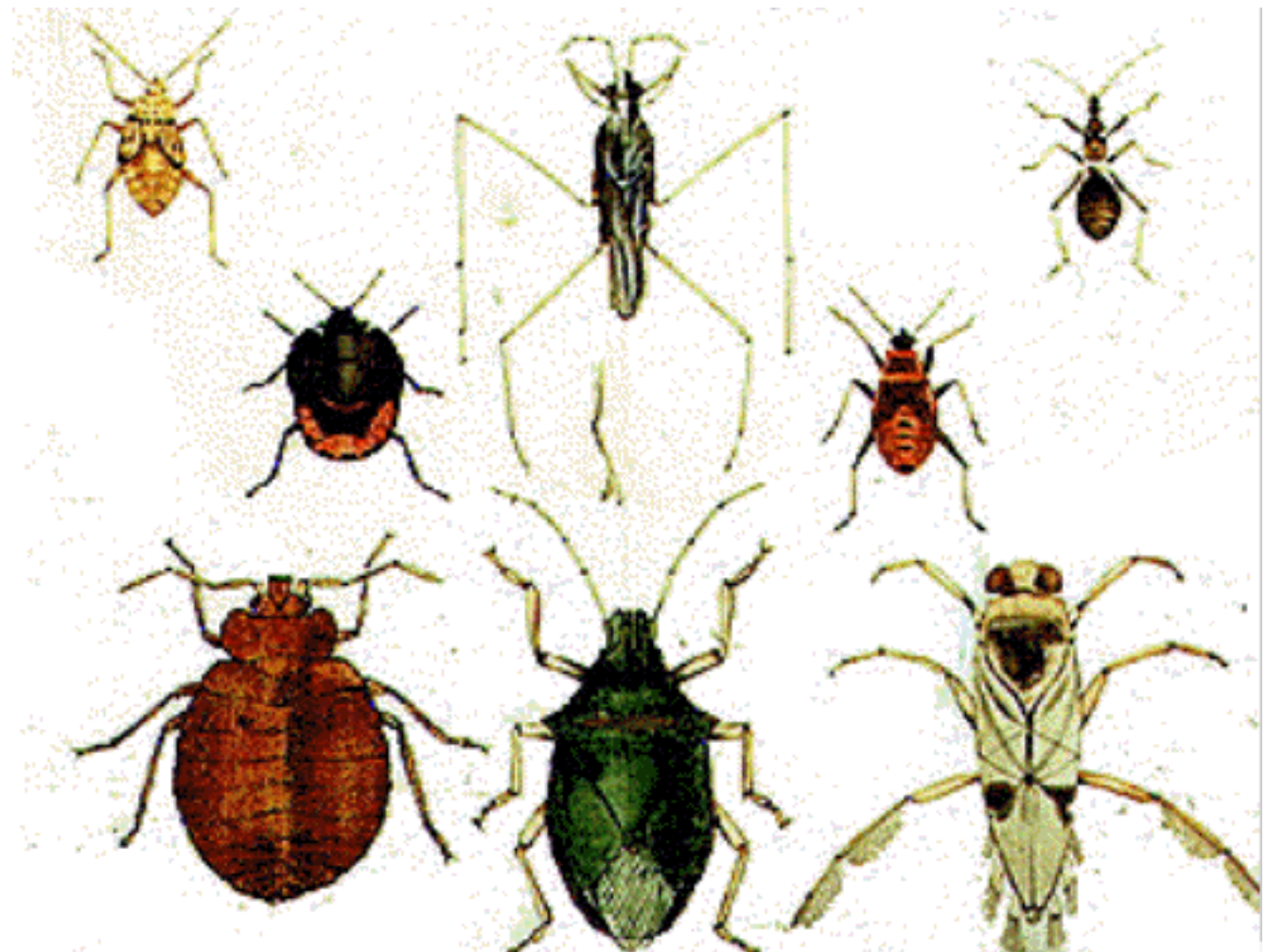
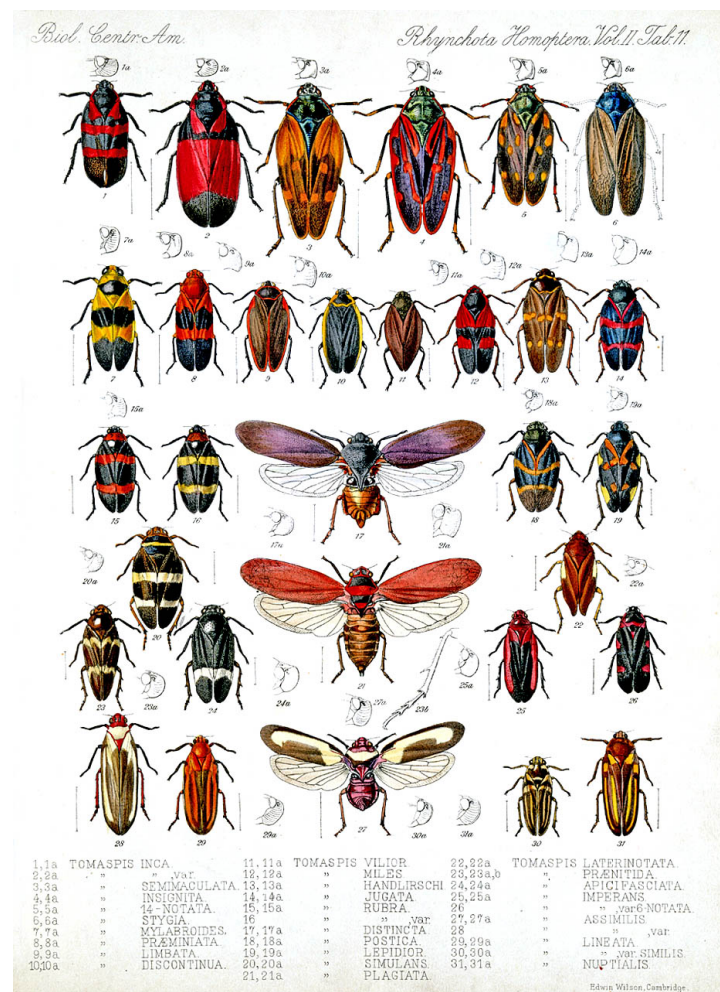


The order true bugs come from is Heteroptera. There are over 40,000 species of group such as cicadas, plant hoppers, leaf hoppers and shield bugs.





They feed on plant sap using _____ and _____ mouth parts.
They do direct damage to plants and indirectly by transported diseases.



The piercing or sucking mouth parts appear as a sharply pointed tube known as _____ or _____.
Which extends from the underside of the head.





Flight is well developed in Hemiptera.

Mostly just a short distance. They
have _____ of wings. They are
generally _____.

They have

of
various forms.





_____ vary or may
either be _____ or _____
and _____.

All true bugs go through what
is called _____

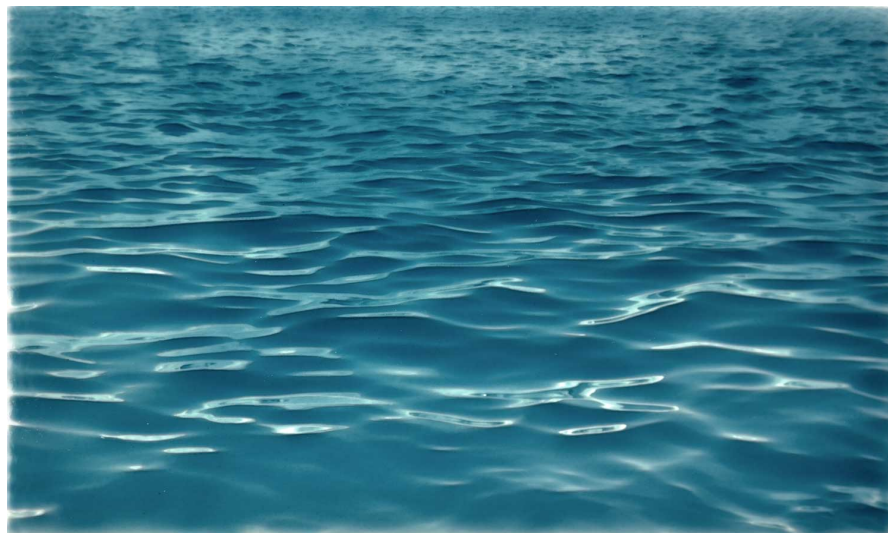
Egg->_____





They live in wide variety of habitats.

Generally _____. Although some have adapted to life on or in the surface of _____.



The brown stink bug





Native to _____,
_____ and Taiwan.



They were Accidentally
introduced into the

They are considered to
be an

They usually reproduce in
the warmth of early
_____ and _____.



The bugs attack numerous types of plant. Such as tomatoes, soybeans, Lima beans, sweet corn ect. Fruit shows _____ more quickly



G Brust

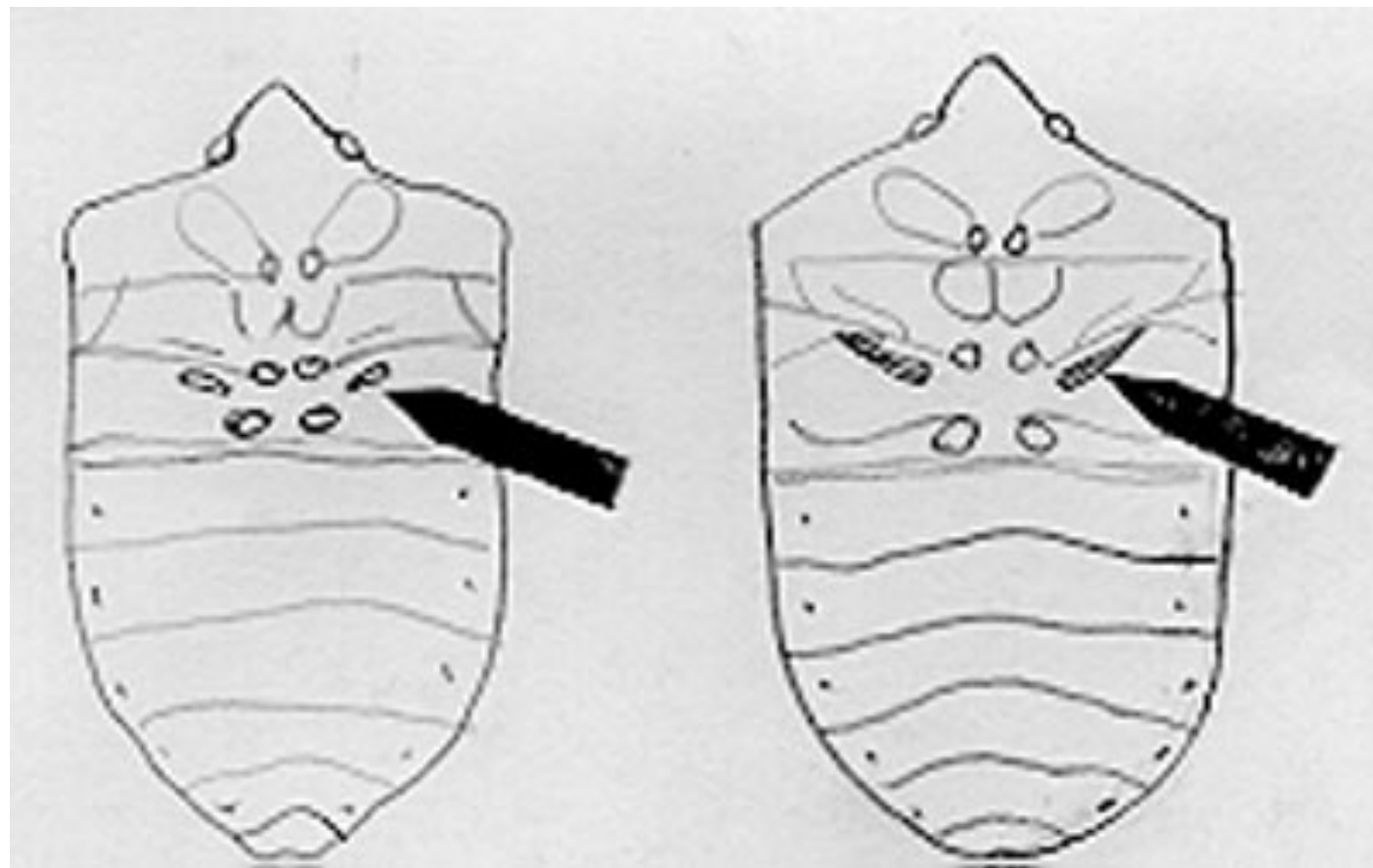


The bug gathers into houses in thousands for winter. They _____ there. But usually get awoken because the warmth allows them to be _____.



Adults can survive for
several months to a

The odor from a stink bug is due to trans 2 _____ and trans 2 _____.
The smell has been characterized as a pungent odor that smells like coriander.



The stink _____ are located on the underside of the _____, between the _____ and _____ pair of legs, and on the dorsal surface of the _____



The stink bugs ability to emit an odor through _____ in its abdomen is a _____ meant to prevent it from being eaten by birds and lizards. However just handling it can set off the _____.



Stink bugs don't harm humans, but they do to gardens and orchards.

They are described as 2 brown
shares on _____ and _____ body.

They have patches of coppery,
metallic colored _____ on their head.





Their eggs are a light _____
color. They are attached side by
side to the _____ of leaves
in masses of _____ eggs

HEY BUG, YOU STINK!

Agricultural pest Brown Stink Bug (Euschistus servus) invades homes

LARVA



Two of the
five larval
stages



ADULT



- Biochemical defense
- Few natural predators
- Hard to kill
- Adults average about half an inch long.

Source: North Carolina State U.
FRANK CECALA/THE STAR-LEDGER

They're are ____ nymph stages. The first stage they are ____ mm. And the fifth stage they are ____ mm in length. The eyes are deep ____ The abdomen is yellowish red and progresses to off white with reddish spots in the fifth stage.



The nymphs don't have wings
when they're born they
_____ through the stages.



They breed in warm weather
because they're cold blooded
and need _____ to survive.